

GDYNIA CHWARZNO WICZLINO

WORKSHOP
20 MARCH 2020

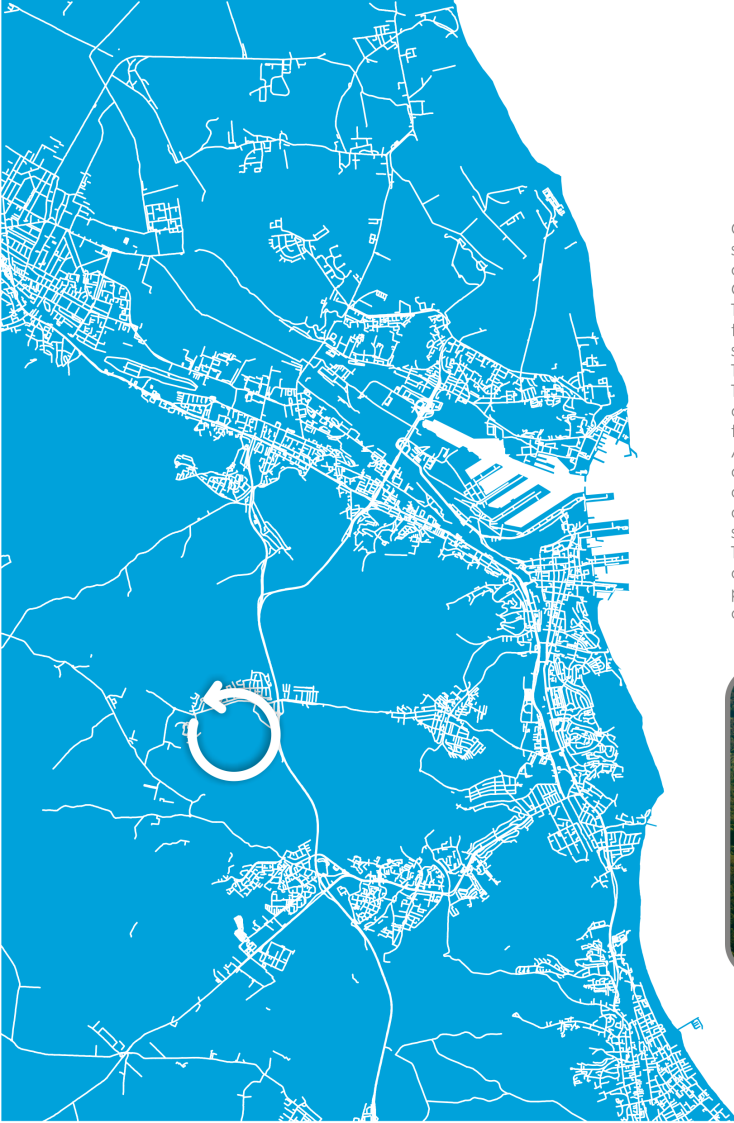
Currently cities are focusing on holistic approach in terms of creating a vision of development - searching for new forms and functions for areas. This is a matter that is important in the issue of implementing the principles of sustainable development and improving the quality of life in cities. Gdynia is one of the youngest Polish cities with about 245 000 inhabitants.

The Chwarzno-Wiczlino district is the area of the main direction of Gdynia's development, the dominant development of the residential function requires supplementing with accompanying service functions, ensuring commercial needs and new jobs places.

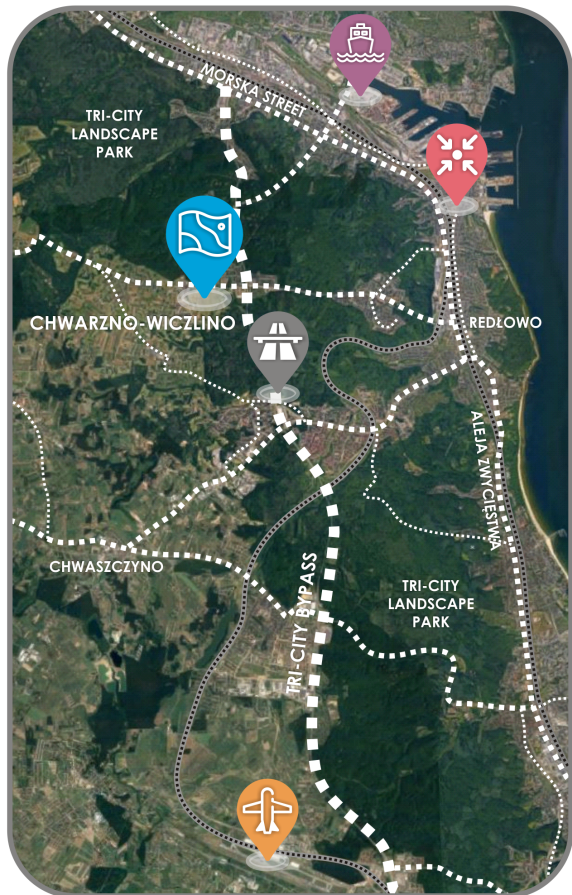
The city of Gdynia owns an area of approximately 60 ha, located in the Chwarzno-Wiczlino district. The area is located in the vicinity of the Tri-City Bypass (about 1 km from the Chwarzno junction), forest areas of the Tri-City Landscape Park and areas of dynamic development of housing estates (more than 500 new inhabitants every year, the highest dynamics of population growth on a city scale).

According to the urban spatial policy defined in the Study of conditions and directions of spatial development in Gdynia, the area is indicated as an area of special opportunities for the development of metropolitan services with the indication of functions such as university campus, science campus, older people health care (AgeTech) along with housing facilities, development of production and service functions using advanced technologies and excluding oppressive functions.

The potential of the area resulting from its investment scale and location, indicates the need to work out development directions in the discussion with the participation of specialists in the field of urban planning and architecture, the real estate market, the world of science and business as well as consulting companies.



LOCATION



60 ha
surface area
WORKSHOP AREA



1 km
to Tri-City Bypass



7 km
to the City Center of Gdynia



8 km
to the Port of Gdynia



19 km
to Gdańsk Lech Wałęsa Airport