

# Office of Homeless Services

State Homelessness Coordinator

August 2023



GOVERNOR'S OFFICE OF  
**Planning & Budget**



**WORKFORCE  
SERVICES**  
HOMELESS SERVICES

**Homelessness  
is a community  
condition, and  
it will take  
community to  
remedy it.**

**Every community is a  
source of Homelessness.**

**What is your community  
doing to prevent and treat  
this most difficult human  
condition?**



**GOVERNOR'S OFFICE OF  
Planning & Budget**



**WORKFORCE  
SERVICES  
HOMELESS SERVICES**

# Two Distinct Homeless Populations

## Acute Homelessness

## Persistent Homelessness

- Those ready for housing and services
- Those not ready

## Data Points

- 2021 – Approximately 17,500 accessed homeless services
- January 2023 Point-in-time Count, 3700
- Length of Time in Emergency Shelter
  - 77% - 90 days or less
  - 57% - 30 days or less
  - 34% - 7 days or less



GOVERNOR'S OFFICE OF  
**Planning & Budget**



**WORKFORCE  
SERVICES**  
HOMELESS SERVICES

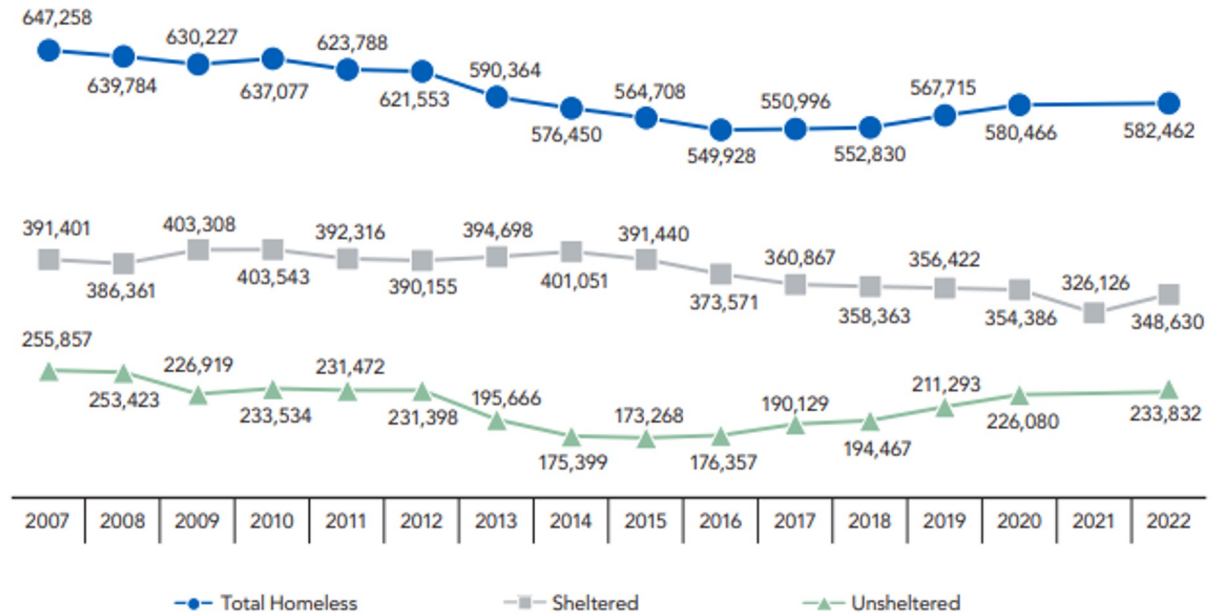
# Rates of Homelessness

Rates of individuals experiencing homelessness per 10,000 people:

- **Utah - 11 per 10,000**
- Mississippi - 4 per 10,000
- South Carolina - 7 per 10,000
- Alabama - 7 per 10,000
- California - 44 per 10,000
- Vermont - 43 per 10,000
- Oregon - 42 per 10,000

U.S. Housing and Urban Development Annual Homelessness Assessment Report to Congress

EXHIBIT 1.1: PIT Estimates of People Experiencing Homelessness  
By Sheltered Status, 2007-2022



Note: The data for 2021 does not display the total count of people experiencing homelessness or the count of all people experiencing unsheltered homelessness due to pandemic-related disruptions to counts. Additionally, estimates of the number of people experiencing sheltered homelessness at a point in time in 2021 should be viewed with caution, as the number could be artificially depressed compared with non-pandemic times, reflecting reduced capacity in some communities or safety concerns regarding staying in shelters.

<https://www.huduser.gov/portal/sites/default/files/pdf/2022-AHAR-Part-1.pdf>

# 2023 Point-in-Time Count Subpopulations

State of Utah Subpopulation	Number of Persons							
	Sheltered		Unsheltered		Total in Subpopulation		Subpopulation as Percentage of Total Individuals Counted	
	2022	2023	2022	2023	2022	2023	2022	2023
Survivors of Domestic Violence (Adults and Minors)	663	694	64	98	727	792	20.4%	21.5%
Survivors of Domestic Violence (Adults Only)	357	388	64	96	421	484	11.8%	13.1%
Adults with HIV/AIDS	33	44	11	12	44	56	1.2%	1.5%
Adults with Substance Abuse Disorders	401	610	172	338	573	947	16.1%	25.7%
Adults with Mental Illness	758	1003	221	499	979	1500	27.5%	40.7%
Veterans	116	152	39	29	155	181	4.4%	4.9%
Chronically Homeless Veterans	20	23	9	6	29	29	0.8%	0.8%
Chronically Homeless Persons in Households of Adults and Minors	61	65	9	8	70	73	2.0%	2.0%
Total Chronically Homeless Persons	564	643	228	361	792	1004	22.3%	27.2%
Unaccompanied Youth (Under Age 25)	144	131	46	66	190	197	5.3%	5.3%
Youth Parent (Under Age 25)	26	14	1	2	27	16	0.8%	0.4%
Child of a Youth Parent	35	19	1	2	36	21	1.0%	0.6%

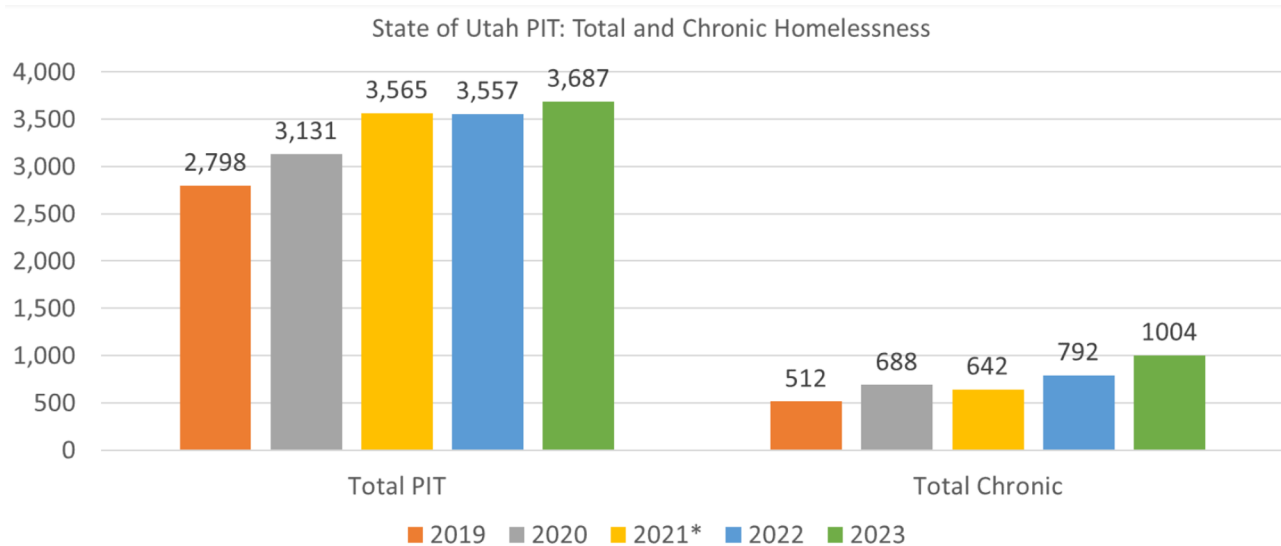
In the 2023 Point-in-Time (PIT) count, Utah witnessed a concerning increase in the number of individuals experiencing chronic homelessness.

- Chronic homelessness refers to individuals who have experienced literal homelessness for at least a year, either continuously or in four or more separate instances within the past three years, while also experiencing a disabling condition such as a physical disability, severe mental illness, or substance use disorder.
- The 2023 PIT count identified **1,004** individuals who met this definition, comprising **27%** of the total count.
- This represents a significant **96%** increase from the 512 people reported as experiencing chronic homelessness in 2019 when Utah revised its reporting process to align better with HUD definitions and national standards.

The complete data report is available at:

<https://jobs.utah.gov/homelessness/homelessnessreport.pdf>

# Chronic Homelessness and Permanent Supportive Housing



\*Please note the asterisk next to 2021, as the number of people experiencing chronic homelessness available that year came just from the sheltered count due to subpopulation data not being collected in the unsheltered count to reduce the risk of COVID-19 transmission. That year should not be compared to the other years.

- To address chronic homelessness effectively, it's important to focus on the availability of **permanent supportive housing (PSH)** beds. PSH provides long-term housing assistance and essential support services for individuals with disabilities, aligning with the definition of chronic homelessness.
- Statewide, the number of people experiencing chronic homelessness has **increased by 96% between 2019 and 2023**. **However, the availability of PSH beds has only risen by 1% or 45 beds during the same period.**
- **During the period between 2012 and 2017**, when Utah achieved significant reductions in chronic homelessness, **the state increased its PSH inventory by adding 804 beds, marking a remarkable 46% growth.**
- **This emphasizes the need to prioritize expanding PSH resources.** By increasing the number of PSH beds, we can offer individuals experiencing chronic homelessness the long-term housing assistance and specialized support they require to overcome their challenges.

# Affordable & Deeply Affordable Housing Need

As part of House Bill 462 passed in 2022, the Department of Workforce Services has contracted with the Gardner Policy Institute (GPI) to develop a database of moderate and affordable housing needs and supply across Utah.

- The GPI team has provided initial estimates showing cumulative surplus/deficit for four area median income (AMI) levels for calendar year 2022.

AMI Level	Housing Units Available	Households	*Unit Deficit/Surplus	Affordable Units Available/100 Household
80% AMI & Below	221,952	221,929	23	100
60% AMI & Below	106,650	174,664	-68,014	61
50% AMI & Below	50,878	146,464	-95,586	35
30% AMI & Below	2,412	79,552	-77,140	3





Statewide Collaboration for Change:

# Utah's Plan to Address Homelessness

FEBRUARY 2023

*Our vision for the homeless response system in Utah is to make homelessness rare, brief and non-recurring; that all people experiencing homelessness can thrive to their fullest potential; and that our communities are stable and safe for everyone.*

— Utah Homelessness Council

- Goal 1:** Increase accessible and affordable permanent housing opportunities for people experiencing homelessness across the state
- Goal 2:** Increase access to and availability of supportive services and case management for people experiencing and at risk of homelessness
- Goal 3:** Expand homeless prevention efforts by increasing coordination, resources, and affordable housing opportunities
- Goal 4:** Target housing resources and supportive services to people experiencing unsheltered homelessness
- Goal 5:** Promote alignment and coordination across multiple systems of care to support people experiencing and at risk of homelessness

The strategic plan, implementation guide, and data is available at:

<https://jobs.utah.gov/homelessness/strategic.html>

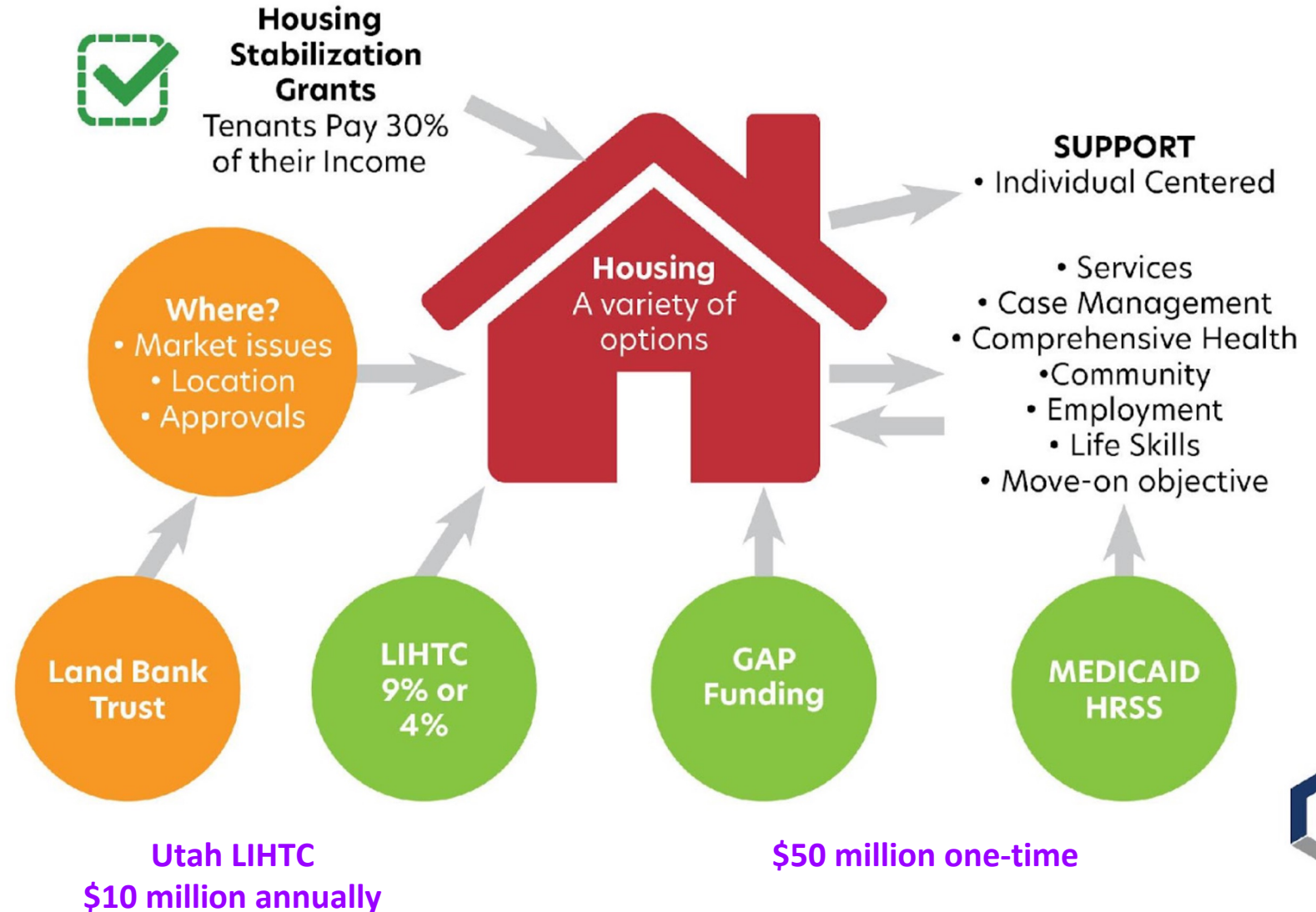




# Supportive Housing

## How to fund it

\$5 million ongoing



# FY23 Deeply Affordable Housing Funding

## \$55,000,000 - ARPA funding

- Application released in July 2022
  - Received **\$168,000,000** in funding requests
  - Many service providers were not able to submit applications due to the fast time frame
- Applications reviewed August 2nd and recommendations sent to the Utah Homelessness Council (UHC) for review on August 31st
- Finalized recommendations with UHC for funding on September 9th

# OHS DEEPLY AFFORDABLE HOUSING FUND

OHS DEEPLY AFFORDABLE HOUSING FUND				TOTAL UNITS	UNIT SUBCATEGORIES	
Agency	Project Title	Recommended Amount	County	Income Restricted - Affordable Units	Of the Affordable - Deeply Affordable Units	Of the Affordable - Homeless Dedicated Units
Blueline	Stratford	\$780,000	Salt Lake	46	46	46
CDCU	Howick 4101 S. Howick	\$800,000	Salt Lake	150	11	11
CDCU	Richmond Flats	\$500,000	Salt Lake	55	5	5
Friends of Switchpoint	The Point Fairpark	\$10,283,622	Salt Lake	94	44	94
Friends of Switchpoint	The Point Red Hills	\$5,278,756	Washington	60	24	54
Friends of Weber Housing Authority	912 Wall Avenue, Ogden, UT 84404	\$500,000	Weber	46	9	18
Housing Assistance Management Enterprise	Pamela's Place Phase 2	\$9,000,000	Salt Lake	115	115	69
Iron County Care and Share/Canyon Creek Services	ICCS-CCS Collaborative	\$6,000,000	Iron	30	30	3
OHS Funding Administration	Contract and program staff to support 15 years compliance and monitoring	\$1,650,000	Statewide Contracts	N/A	N/A	N/A
Murray- TWG Fireclay	152 W 4250 S	\$1,000,000	Salt Lake	40	5	5
Salvation Army	2615 Grant Ave	\$2,000,000	Weber	53	52	0
The Other Side Academy	Tiny Home Village	\$4,000,000	Salt Lake	60	54	54
Utah Regional Housing Corp	Multiplex	\$5,069,000	Utah			
Utah Regional Housing Corp	85 North	\$990,000	Utah	19	6	12
Ville 1659	1659 W North Temple	\$3,858,622	Salt Lake	197	197	100
Ville 647	647 S Main	\$1,000,000	Sevier	40	40	20
Weber Housing Authority	2325 Madison Avenue	\$1,290,000	Weber	33	33	33
West Haven TWG	2150 S 1100 W	\$1,000,000	Weber	40	8	5
	<b>TOTAL</b>	<b>\$55,000,000</b>		<b>1078</b>	<b>679</b>	<b>529</b>

# Those not ready for housing and services

Unsanctioned Camping is the worst thing we can accept

- Places unfit for human habitation
- Public health/Sanitation
- Victimization
- Public Conflicts
- No camping ordinances

The unanswered question



GOVERNOR'S OFFICE OF  
**Planning & Budget**



**WORKFORCE  
SERVICES**  
HOMELESS SERVICES

# Where do people go?



GOVERNOR'S OFFICE OF  
**Planning & Budget**



**WORKFORCE  
SERVICES**  
HOMELESS SERVICES





**HOPE  
SPRINGS**  
OVERCOME. HEAL. GROW.





