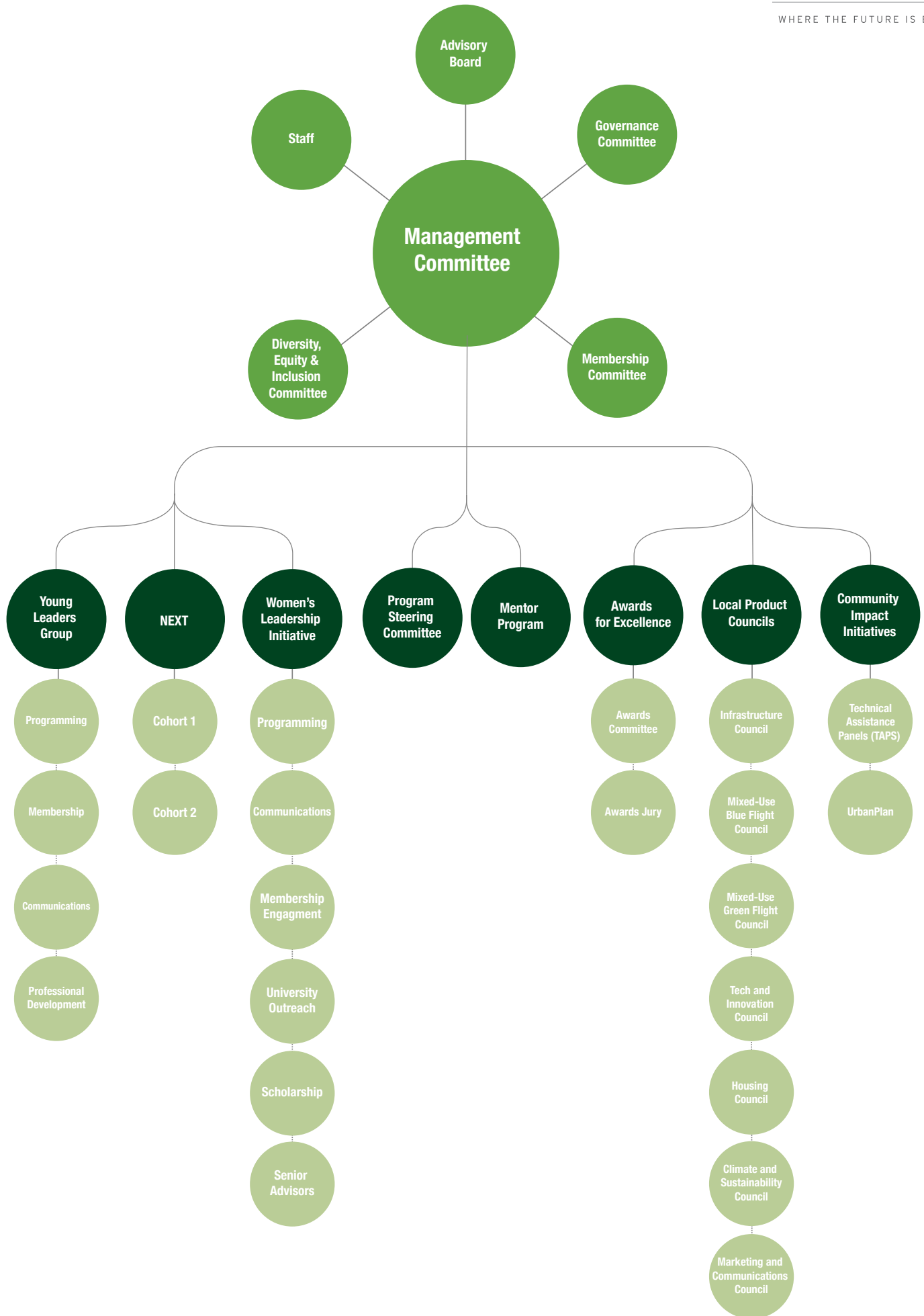


# ULI New York Organizational Chart



# MANAGEMENT COMMITTEE



**Chair**

**Helen Hwang**

Senior Executive Managing Director  
Meridian Investment Sales



**Vice Chair**

**Richard Roberts**

Principal & Managing Director  
Red Stone Equity Partners



**Chair for Mission  
Advancement**

**Robin Zeigler**

Founder & Chief Executive Officer  
MURAL Real Estate Partners



**Treasurer**

**Jess Ritchie**

Assurance Manager  
EY



**Member**

**Onur Akansel**

Founder & Managing Partner  
Seal Investment



**Member**

**Nadine Anderson**

Vice President of Acquisitions  
Galvanize Climate Solutions



**Member**

**Lola Bellini**

Principal  
Axia Investment Holdings LLC



**Member**

**Sarah Berman**

President  
The Berman Group



**Member**

**Kati Chen**

Transactions Manager  
Madison Energy Infrastructure



**Member**

**Dino Christoforakis**

Co-Founder, AVANI Residential  
Founder, Vential Investments



**Member**

**Jessica Elliott**

Associate  
Hart Howerton



**Member**

**Lisa Flicker**

Senior Managing Partner,  
Head of Real Estate  
Jackson Lucas

# MANAGEMENT COMMITTEE CONT.



**Member**

**Frank Futia**

Transaction Manager  
New York City Department of  
Citywide Administrative Services



**Member**

**Emily Gallo**

Vice President, Director of  
Infrastructure and Mobility Equity  
HNTB



**Member**

**Terri Gumula**

Special Assets  
M&T Bank



**Member**

**Will Innes**

Chief of Staff  
New York City Department of Housing  
Preservation & Development



**Member**

**Young Ji**

Portfolio Manager  
New York City Economic  
Development Corporation



**Member**

**Varun Kohli, FAIA LEED AP**

Principal & Director of Sustainability  
Corgan



**Member**

**Lesley Lisser**

Senior Director - Asset Management  
Invesco Real Estate



**Member**

**Meredith Lovejoy**

Director of Business Development  
Cumming Group



**Member**

**Layth Madi**

Senior Vice President of Development  
Lendlease



**Member**

**Cindy McLaughlin**

Head of Carbon Impact  
CarbonBuilt



**Member**

**Karl Mittermayr**

Head of Acquisitions  
George Comfort & Sons, Inc.



**Member**

**Ignacio Montojo**

Principal  
HR&A Advisors

# MANAGEMENT COMMITTEE CONT.



**Member**

**Waverly Neer**

Vice President, Asset Management  
New York City Economic  
Development Corporation



**Vice Chair**

**Robert Okpala**

Partner, New York Co-Office Director  
Buro Happold



**Member**

**Yasmin Rehmanjee**

Partner, New York Co-Office Director  
Buro Happold



**Member**

**Eric Rothman**

Partner, Board of Directors Co-Chair  
HR&A Advisors



**Member**

**Abi Rudow**

Senior Environmental Planner  
VHB



**Member**

**Emmanuelle Slossberg**

Founder, Chief Strategy and  
Marketing Officer  
Connect 10 Strategy



**Member**

**Ali Sutherland-Brown**

Principal  
Karp Strategies



**Member**

**Jason Vesuvio**

Vice President  
Pavarini McGovern



**Member**

**D'juero Villaran-Rokovich**

Program Manager – Economic  
Development Services  
Akerman LLP



**Member**

**Rashid Walker**

Founder & Chief Executive Officer  
First Street Capital



**Member**

**Kendra White**

Manager - JV Client Relationships  
BXP



**Member**

**Jie Zhu**

Partner  
L+Z Architecture

# ADVISORY BOARD



**Chair**

**Helen Hwang**

Senior Executive Managing Director  
Meridian Investment Sales



**Vice Chair**

**Richard Roberts**

Principal & Chief Business  
Development Officer  
Red Stone Equity Partners



**Member**

**Jason Alderman**

Senior Managing Director, City Head,  
New York Office  
Hines



**Member**

**Kyle Bolden**

Partner - Real Estate,  
Hospitality & Construction  
EY



**Member**

**Richard Brancato**

Chief Operating Officer  
Rockrose



**Member**

**Meg Brod**

Senior Managing Director, Northeast  
Rockefeller Group



**Member**

**Matthew Brody**

Principal  
Baker Tilly



**Member**

**Melissa Burch**

Executive Vice President and Chief  
Operating Officer  
New York City Economic  
Development Corporation



**Member**

**Paula Roy Carethers**

Director of Real Estate  
Archdiocese of New York



**Member**

**Sam Chandan**

Founding Director, Chen Institute  
for Global Real Estate Finance  
NYU Stern School of Business



**Member**

**Chris DeAngelis**

President  
Tri-Hill Management LLC



**Member**

**Craig Deitelzweig**

President & Chief Executive Officer  
Marx Realty

# ADVISORY BOARD CONT.



**Member**

**David Dishy**  
Chief Executive Officer  
LMXD



**Member**

**Toby Dodd**  
Chief Revenue Officer, Americas  
Cushman & Wakefield



**Member**

**Marc Ehrlich**  
President  
Rose Associates



**Member**

**Jessica Elliott**  
Associate  
Hart Howerton



**Member**

**Lourdes Fisher**  
Senior Managing Director, Co-Head,  
Client Solutions Group  
Bridge Investment Group



**Member**

**Lisa Flicker**  
Senior Managing Partner, Head of  
Real Estate  
Jackson Lucas



**Member**

**Frank Futia**  
Transaction Manager  
New York City Department of  
Citywide Administrative Services



**Member**

**Kirk Goodrich**  
President  
Monadnock Development



**Member**

**Veronica Hackett**  
Co-Founder/CEO  
Clarett



**Member**

**Young Ji**  
Portfolio Manager  
New York City Economic  
Development Corporation



**Member**

**Josh Koss**  
Head of Real Estate Development  
& General Counsel  
Ash



**Member**

**Bryan Kelly**  
President  
Gotham Organization

# ADVISORY BOARD CONT.



**Member**

**Hope Knight**

President, Chief Executive Officer and  
Commissioner  
Empire State Development



**Member**

**David Kramer**

President  
Hudson Companies



**Member**

**Nancy Lashine**

Founder and Managing Partner  
Park Madison Partners



**Member**

**Spencer Levine**

President  
RAL Companies & Affiliates, LLC



**Member**

**Rachel Loeb**

Chief Investment Officer  
Benenson Capital Partners



**Member**

**Ken McIntyre**

Chief Executive Officer  
Real Estate Executive Council (REEC)



**Member**

**Sean McSweeney**

Senior Vice President, Acquisitions  
Mitsui Fudosan America



**Member**

**Tell Metzger**

Senior Vice President,  
Equity Investments  
Community Preservation Corporation



**Member**

**Robert Morgenstern**

Chief Executive Officer  
Canvas Property Group



**Member**

**Lauren Moss**

Senior Vice President, Chief  
Sustainability Officer  
Vornado



**Member**

**Olivia Moss**

Managing Director, Chief of Staff to  
the CEO  
Tishman Speyer



**Member**

**Liz Oakley**

Executive Vice President,  
Affordable Development  
Douglaston Development

# ADVISORY BOARD CONT.



**Member**

**Frank Patafio**

Senior Executive Vice President-  
Senior Managing Director,  
US Investments  
RXR



**Member**

**Clelia Warburg Peters**

Managing Partner  
Era Ventures



**Member**

**Sara Queen**

Managing Director and Head of Real  
Estate Equity  
MetLife Investment Management



**Member**

**Bethany Logan Ropa**

Head of Americas – Real Estate,  
Lodging & Leisure  
UBS Investment Bank



**Member**

**Eric Rothman**

Partner, Board of Directors Co-Chair  
HR&A Advisors



**Member**

**Michael Samuelian**

Director of Urban Technology Hub,  
Campus Planning and Sustainability  
Cornell Tech



**Member**

**Jesse Terry**

Chief Investment Officer  
HUBB NYC



**Member**

**Elise Wagner**

Partner  
Kramer Levin



**Member**

**Robin Zeigler**

Founder and Chief Executive Officer  
MURAL Real Estate Partners



## DIVERSITY, EQUITY, AND INCLUSION COMMITTEE



**Co-Chair**

**Jessica Elliott**

Associate  
Hart Howerton



**Co-Chair**

**Eric Rothman**

Partner, Board of Directors Co-Chair  
HR&A Advisors

## MEMBERSHIP COMMITTEE



**Chair**

**Lisa Flicker**

Senior Managing Partner, Head of  
Real Estate  
Jackson Lucas



**Vice Chair**

**Layth Madi**

Senior Vice President of Development  
Lendlease

## PROGRAM STEERING COMMITTEE



**Co-Chair**

**Young Ji**

Portfolio Manager  
New York City Economic  
Development Corporation



**Co-Chair**

**Jason Vesuvio**

Vice President  
Pavarini McGovern

# LOCAL PRODUCT COUNCILS



**Co-Chair - Climate and Sustainability**

**Varun Kohli, FAIA LEED AP**  
Principal & Director of Sustainability  
Corgan



**Co-Chair - Climate and Sustainability**

**Cindy McLaughlin**  
Head of Carbon Impact  
CarbonBuilt



**Vice Chair - Climate and Sustainability**

**Suhail Y Tayeb**  
Professor  
NYU



**Co-Chair - Housing**

**Will Innes**  
Chief of Staff  
New York City Department of Housing  
Preservation & Development



**Co-Chair - Housing**

**Lesley Lisser**  
Senior Director - Asset Management  
Invesco Real Estate



**Vice Chair - Housing**

**Alex Merchant**  
Vice President for Strategic  
Operations  
New York City Housing Development  
Corporation



**Co-Chair - Infrastructure**

**Emily Gallo**  
Vice President, Director of  
Infrastructure and Mobility Equity  
HNTB



**Co-Chair - Infrastructure**

**Ignacio Montojo**  
Principal  
HR&A Advisors



**Vice Chair - Infrastructure**

**Chi Chi Truong**  
Senior Civil Engineer  
Arup



**Co-Chair - Marketing and Communications**

**Sarah Berman**  
President  
The Berman Group



**Co-Chair - Marketing and Communications**

**Emmanuelle Slossberg**  
Founder, Chief Strategy and  
Marketing Officer  
Connect 10 Strategy



**Co-Chair - Mixed-Use Blue Flight**

**Terri Gumula**  
Special Assets  
M&T Bank

## LOCAL PRODUCT COUNCILS CONT.



**Co-Chair - Mixed-Use  
Blue Flight**

**Rashid Walker**

Founder & Chief Executive Officer  
First Street Capital



**Vice Chair - Mixed-Use  
Blue Flight**

**Steve Grant**

Managing Principal  
MCRE Partners



**Co-Chair - Mixed-Use  
Green Flight**

**Meredith Lovejoy**

Director of Business Development  
Cumming Group



**Co-Chair - Mixed-Use  
Green Flight**

**Ali Sutherland-Brown**

Principal  
Karp Strategies



**Vice Chair - Mixed-Use  
Green Flight**

**Daniel Carr**

Co-Founder & Managing Partner  
Alpaca Real Estate



**Co-Chair - Tech and  
Innovation**

**Nadine Anderson**

Vice President of Acquisitions  
Galvanize Climate Solutions



**Co-Chair - Tech and  
Innovation**

**Robert Okpala**

Partner, New York Co-Office Director  
Buro Happold

## TAPS STEERING COMMITTEE



**Chair**

**Abi Rudow**

Senior Environmental Planner  
VHB



**Vice Chair**

**Kati Chen**

Transactions Manager  
Madison Energy Infrastructure

## URBANPLAN STEERING COMMITTEE



**Co-Chair**

**D'juro Villaran-Rokovich**

Program Manager – Economic  
Development Services  
Akerman LLP



**Co-Chair**

**Jie Zhu**

Partner  
L+Z Architecture

# AWARDS FOR EXCELLENCE COMMITTEE



**Co-Chair**

**Jared Epstein**  
President  
Aurora Capital Associates



**Co-Chair**

**Brian Feil**  
Principal  
Feil Organization



**Co-Chair**

**Victor Sigoura**  
Founder & CEO  
Legion Investment Group



**Vice Chair**

**Michelle Kleger**  
Senior Vice President,  
Business Development  
Kensington Vanguard



**Member**

**Forth Bagley**  
Principal  
Kohn Pedersen Fox



**Member**

**Catherine Chen**  
Managing Director  
Apollo Global Management



**Member**

**Alan Chun**  
Chief Operating Officer  
OKO Group



**Member**

**Najee Coverson**  
Vice President  
Rockwood Capital



**Member**

**George Evans**  
Director  
Goulston & Storrs



**Member**

**Patricia Hauserman**  
Principal  
Hauserman Associates LLC



**Member**

**Karen Horstmann**  
Founder, Managing Partner  
Sage Capital Ventures



**Member**

**Erik Horvat**  
Global Co-Head of Real Estate  
The Olayan Group

# AWARDS FOR EXCELLENCE COMMITTEE CONT.



**Member**

**Linda Isaacson**

Founder & Managing Partner  
BloomLarge LLC



**Member**

**Matt Johnston**

Managing Director and Co-Head  
of U.S. Real Estate Acquisitions  
Pretium



**Member**

**Jee Mee Kim**

City Executive, NYC Region/  
Vice President  
Arcadis



**Member**

**Aaron Koffman**

Founder and CEO  
Milestone Development



**Member**

**Vivien Krieger**

Co-Chair, Zoning, Land Use  
& Development  
Cozen O'Connor



**Member**

**Julia Murphy**

Partner  
Skidmore, Owings & Merrill



**Member**

**Adnan Pasha**

Associate Principal/Vice President  
Langan



**Member**

**Tal Peri**

Head of U.S. East Coast  
& Latin America  
Union Investment Real Estate GmbH



**Member**

**Juan Porral**

Partner  
Grimshaw Architects PC



**Member**

**Silke Rapelius**

Principal  
GKV Architects



**Member**

**Diana Shieh**

Head of U.S. Asset Management  
Oxford Properties



**Member**

**Emmanuelle Slossberg**

Founder, Chief Strategy and  
Marketing Officer  
Connect 10 Strategy

# AWARDS FOR EXCELLENCE COMMITTEE CONT.



**Member**

**Rosalind Tsang**

New York City Studio Director  
BDP



**Member**

**Scott Vetri**

Partner and Chair, Real Estate  
Investment and Finance Practice  
Katten Muchin Rosenman LLP



**Member**

**Rashid Walker**

Founder & CEO  
First Street Capital



**Member**

**Pamela West**

Managing Director - Real Estate  
Impact Investing  
Nuveen Investments



**Member**

**Andrea Wong-Miller**

Vice President  
Richman Housing Resources LLC



**Member**

**Beth Zafonte**

Director of Economic  
Development Services  
Akerman LLP

# AWARDS FOR EXCELLENCE JURY



**Member**

**Lauren Cahill**  
Senior Vice President  
Grubb Properties



**Member**

**Julie Canter**  
Partner  
PWP Landscape Architecture



**Member**

**Marc Ehrlich**  
President  
Rose Associates



**Member**

**Drew Fung**  
Managing Director  
Clarion Partners



**Member**

**Anne-Sophie Hall**  
Northeast Regional Practice Area  
Leader, Senior Associate  
Gensler



**Member**

**Jeff Hébert**  
Chief Executive Officer  
HR&A Advisors



**Member**

**Helen Hwang**  
Senior Executive Managing Director  
Meridian Capital



**Member**

**Brian Masuda**  
Principal  
Ennead Architects



**Member**

**Adam Meister**



**Member**

**Mehul J. Patel**



**Member**

**Lucas Posada**  
Director, New York Office  
bloomimages



**Member**

**David Quart**  
Northeast Real Estate Market Leader  
VHB



# AWARDS FOR EXCELLENCE JURY CONT.



**Member**

**Sujohn Sarkar**

Managing Director,  
Asset Management  
Trinity Church Wall Street



**Member**

**Robert Schiffer**

Executive Vice President,  
Development  
SL Green Realty Corp.



**Member**

**Mary Serafy**

Managing Director of  
Design & Construction  
BRP Companies



**Member**

**Kirsten Sibilja**

Managing Principal  
Dattner Architects



**Member**

**Aida Stoddard**

Senior Vice President of Development  
MAG Partners



**Member**

**Steve Trapp**

Executive Vice President,  
Development & Construction  
Columbia Property Trust



**Member**

**Jay Valgora**

Principal and Founder  
STUDIO V Architecture



**Member**

**Robin Zeigler**

Founder and Chief Executive Officer  
MURAL Real Estate Partners

# YOUNG LEADERS GROUP



**Co-Chair - Executive Committee**

**Frank Futia**

Transaction Manager  
New York City Department of  
Citywide Administrative Services



**Co-Chair - Executive Committee**

**Waverly Neer**

Vice President, Asset Management  
New York City Economic  
Development Corporation



**Co-Chair Communications**

**Cayla McElwee**

Commercial Real Estate  
Strategy Analyst  
J.P. Morgan Chase



**Co-Chair Communications**

**John Morgan**

Acquisitions Manager  
The Hudson Companies



**Co-Chair - Membership**

**Ryan McGuirl**

Associate Director  
Avison Young Tri-State  
Investment Sales



**Co-Chair - Membership**

**Jon Zelnick**

Senior Manager for Projects,  
Operations & Real Estate Transactions  
Princeton University



**Co-Chair - Professional Development**

**Chris Hendler**



**Co-Chair - Professional Development**

**Marcos Zapata**

Production Analyst  
KeyBank



**Co-Chair - Programming**

**Josh Koss**

Head of Real Estate Development  
& General Counsel  
Ash



**Co-Chair - Programming**

**Alec Ventrice**

Associate, Acquisitions & Capital  
Markets  
Vornado Realty Trust

# NEXT COMMITTEE



**Co-Chair**

**Onur Akansel**

Founder & Managing Partner  
Seal Investment



**Co-Chair**

**Karl Mittermayr**

Head of Acquisitions  
George Comfort & Sons, Inc.



**Vice Chair**

**Georgina Lalli**

Senior Associate Principal  
Kohn Pedersen Fox



**Cohort 1 Co-Chair**

**Helen Paul**

Managing Director  
Cushman & Wakefield



**Cohort 1 Co-Chair**

**Jamie Piazza**

Principal  
PDCo.



**Cohort 2 Co-Chair**

**Eric Selbst**

Director, Northeast Development  
Rockefeller Group



**Cohort 2 Co-Chair**

**Grant Takeda**

Director  
Westbrook Partners

# WOMEN'S LEADERSHIP INITIATIVE



**Chair**

**Kendra White**

Manager - JV Client Relationships  
BXP



**Vice Chair**

**Yasmin Rehmanjee**

Partner, New York Co-Office Director  
Buro Happold



**Co-Chair  
Communications**

**Lindsay Egert**

Client Advocate  
Lockton Companies



**Co-Chair  
Communications**

**Alicia Koledin**

President and Founder, AKcelerate  
Marketing and Communications  
Manager, AYON Studio



**Co-Chair – Membership  
Engagement**

**Jennifer Chen**

Project Manager  
Five Horsemen Construction



**Co-Chair - Membership  
Engagement**

**Michelle Greco**

Managing Director  
BBG Inc.



**Co-Chair - Programming**

**Annie Yan Bailey**

Development  
Two Trees Management Company



**Co-Chair - Programming**

**Leah Blank**

Director of Marketing  
The Hardy Group



**Co-Chair - Scholarship**

**Marsella Marsella**

Financial Analyst  
RBH Group



**Co-Chair - Scholarship**

**Jessica Tan**

Vice President, Development  
MURAL Real Estate Partners



**Co-Chair - University  
Outreach**

**Carly AuClair**

Senior Project Manager, Design  
RXR



**Co-Chair - University  
Outreach**

**Tzara Peterson**

Project Architect  
Ennead Architects

## MENTOR PROGRAM



**Co-Chair**

**Lola Bellini**

Principal  
Axia Investment Holdings LLC



**Co-Chair**

**Dino Christoforakis**

Co-Founder, AVANI Residential  
Founder, Vential Investments



**Vice Chair**

**Nathalia Bernardo**

Associate General Counsel,  
Real Estate  
Rockwood Capital



**Vice Chair**

**Neda Levy**

Founder & Chief Executive Officer  
Leo Search Partners

## ULI NEW YORK STAFF



**Executive Director**

**Felix Ciampa**

ULI New York  
Executive Director



**Staff**

**Chris Karakul**

ULI New York  
Senior Manager



**Staff**

**Carolyn Whelan**

ULI New York  
Senior Manager



**Staff**

**Quincy Bair**

ULI New York  
Senior Associate



**Staff**

**Laura Konort**

ULI New York  
Senior Associate



**Staff**

**Sam Mullins**

ULI New York  
Senior Associate