

# Regional Council of Mayors

March 14, 2022



# Cities (Subnationals)

## Facilitate

- Renewable Energies
- Economic Development
- Job Creation

## Facilities and Fleets

- Construct, Operate and Maintain
- Transportation
- Water
- Sometimes Utilities



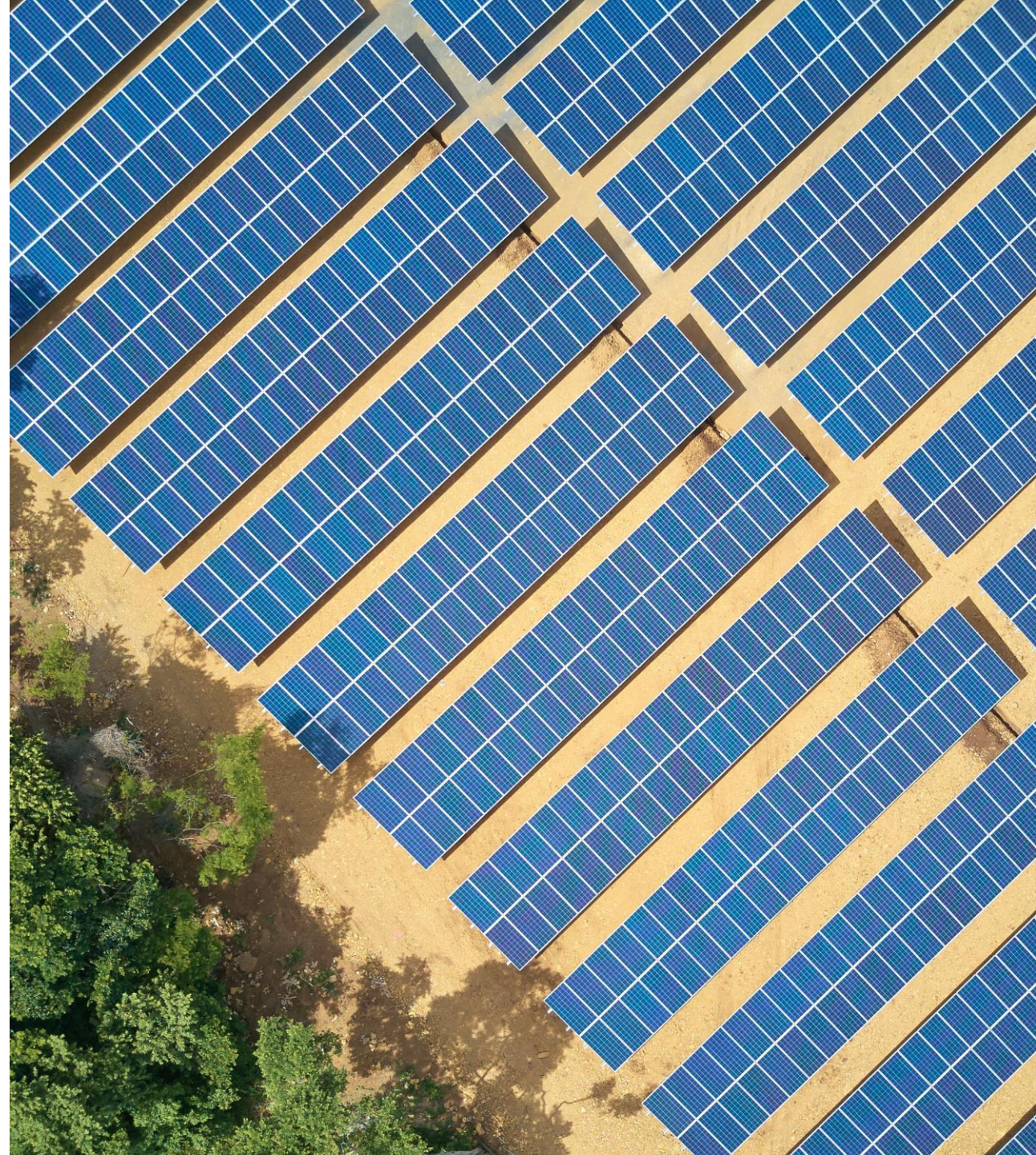


# Energy

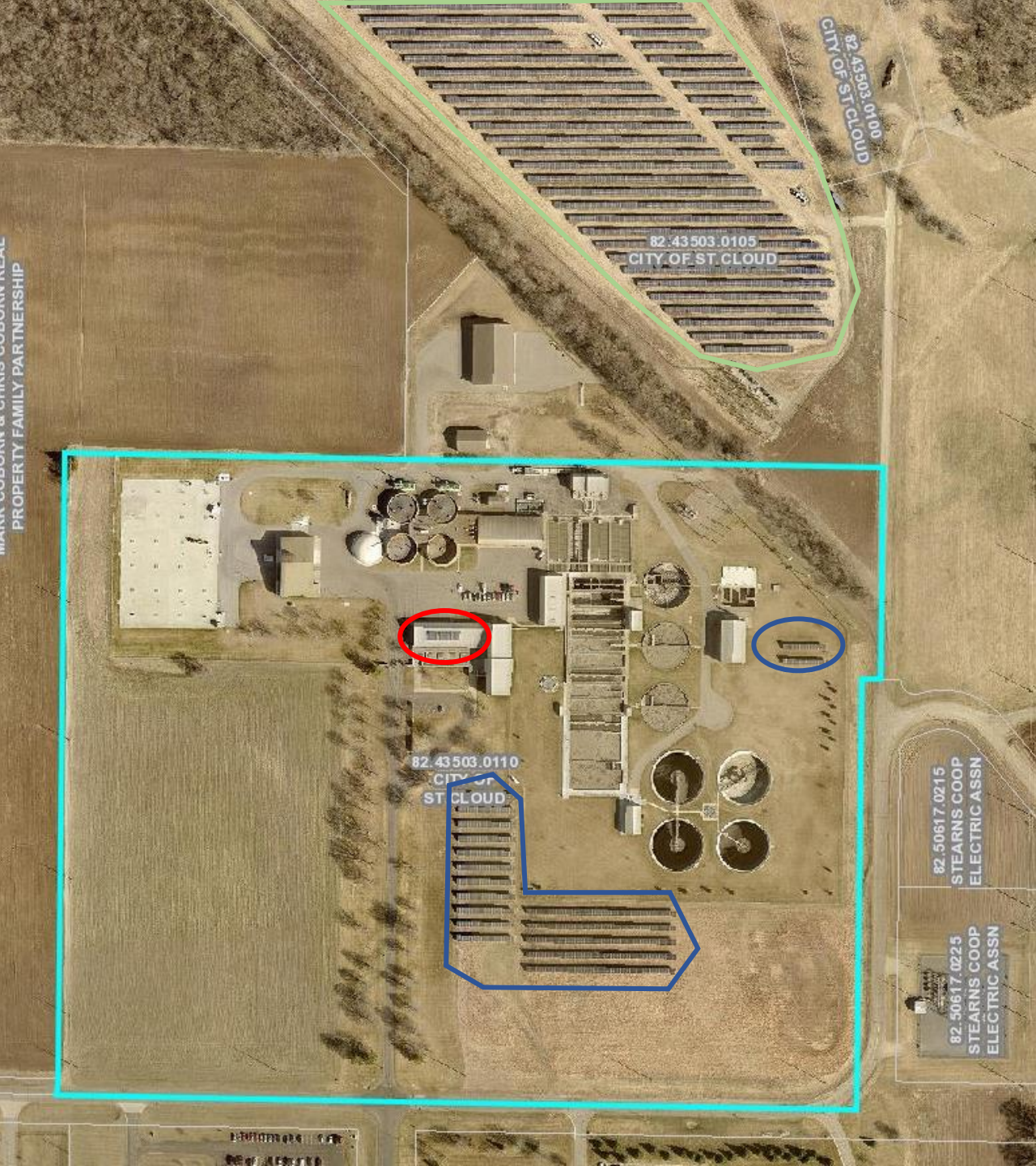
Solar

Wind

Others







## City Owned Facility

(St. Cloud Wastewater Treatment Plant)

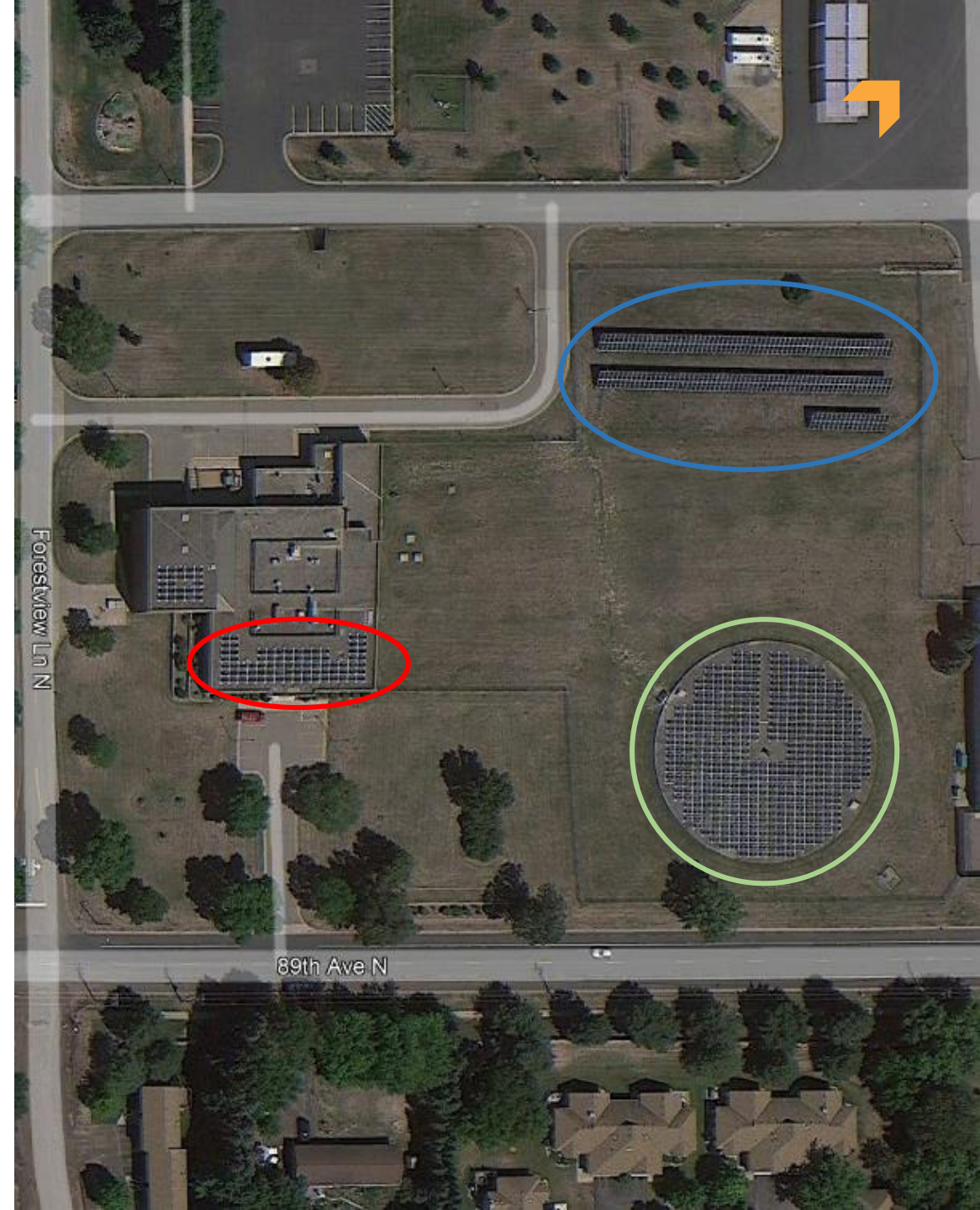
- Rooftop Solar
- Ground Mount
- Community Solar Garden (CSG)



# City Owned Facility

(Maple Grove Water Treatment Plant)

- Rooftop Solar
- Solar on Storage Tank
- Ground Mount





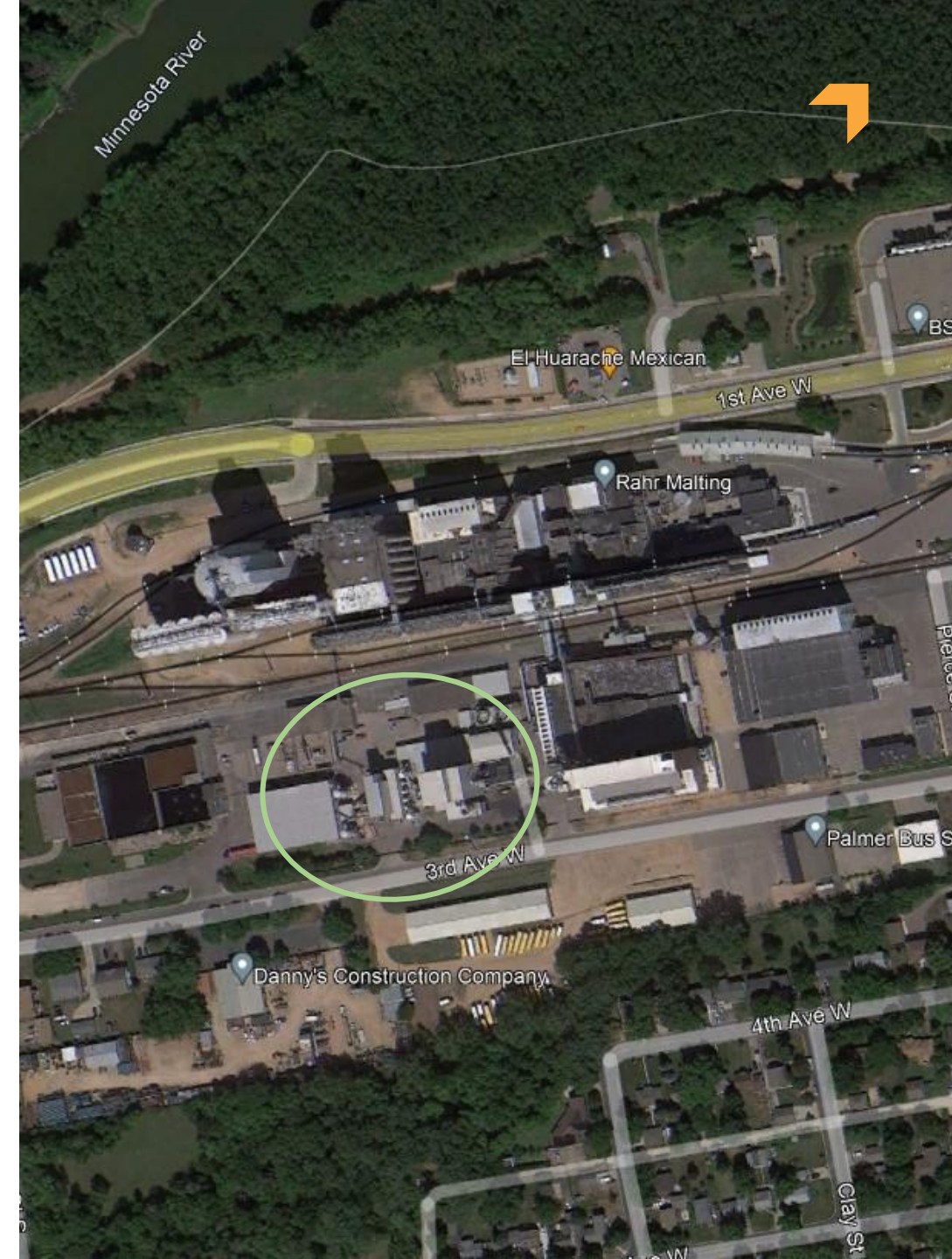
## Other Gov't Owned Facility (Blue Lake Wastewater Treatment Plant)

- Ground Mount

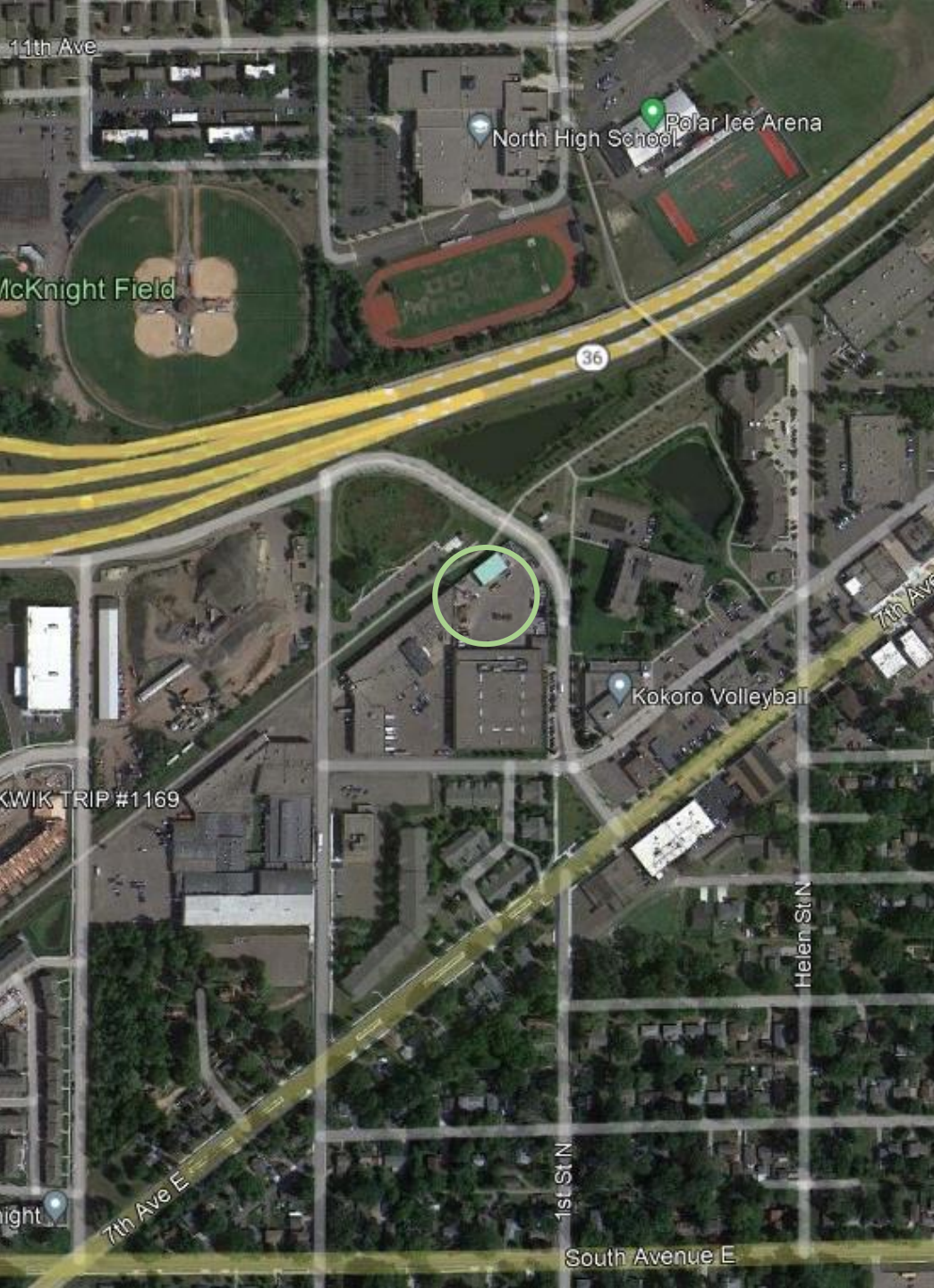


# Private/Tribal Partnership (Kota Energy/Rahr Malting)

- Biomass Steam/Energy

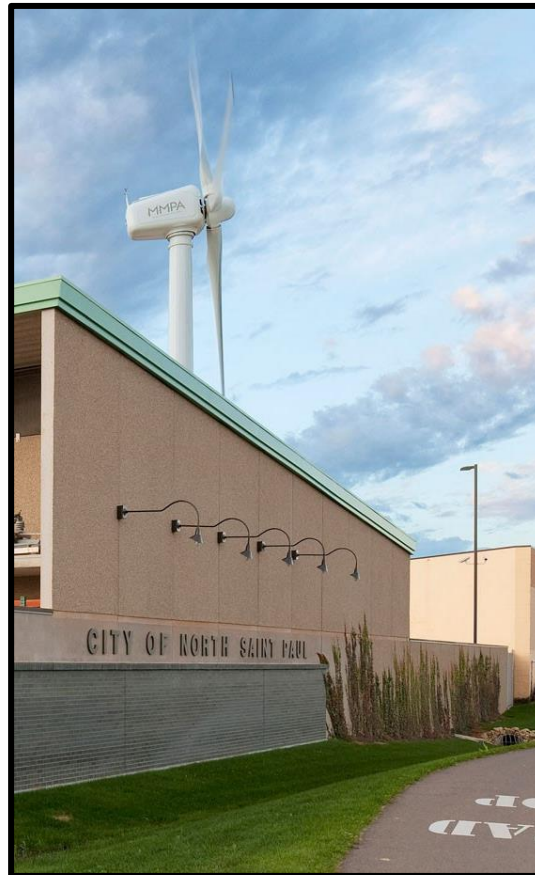






## City/Partner Owned Facility (North St. Paul/MMPA)

- Commercial Scale Wind



# U of M Owned Facility (UMore)

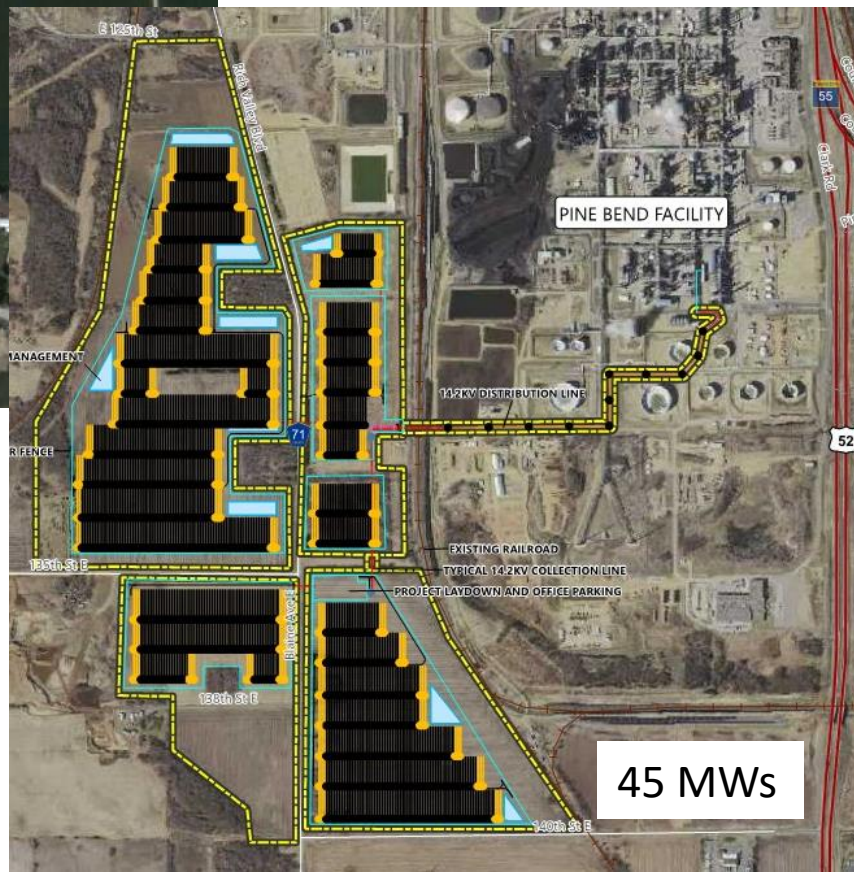
- Utility Scale Wind







Two 5 MWs



45 MWs

## Privately Owned Facilities (Nat'l Grid and Flint Hills)

- CSG and Utility Scale Solar

# City Energy

- Outright Ownership
- Lease/Purchase
- CSG Subscriptions
- Power Purchase Agreements
- Renewable Energy Credits







## 2021 SUSTAINABILITY PLAN

### City Regulations

- Comprehensive Plan
- Climate Action/Sustainability Plan
- Zoning Ordinance

# Resilient Infrastructure Planning

- Utilize Existing Studies and Plans
- Develop prioritization criteria for your community.
- Leverage Grant Opportunities
- Integrate resilience planning early

Natural hazard mitigation  
**saves \$6 for every \$1 spent**  
on infrastructure resilience  
(National Institute of Building  
Sciences)





# WATER

- Water use reduction
- Water reuse
- Wellhead Protection
- Stormwater and flood management
- Green Infrastructure
- Infiltration
- Public engagement



ECONOMIC



SOCIAL



ENVIRONMENTAL

# NATURAL RESOURCES & LANDSCAPING

- Converting unused open spaces to native vegetation
- Infiltration
- Habitat restoration
- Community Gardens
- Pollinators
- Tree Preservation
- Invasive species management
- Geohazard risk assessment



**ECONOMIC**



**SOCIAL**

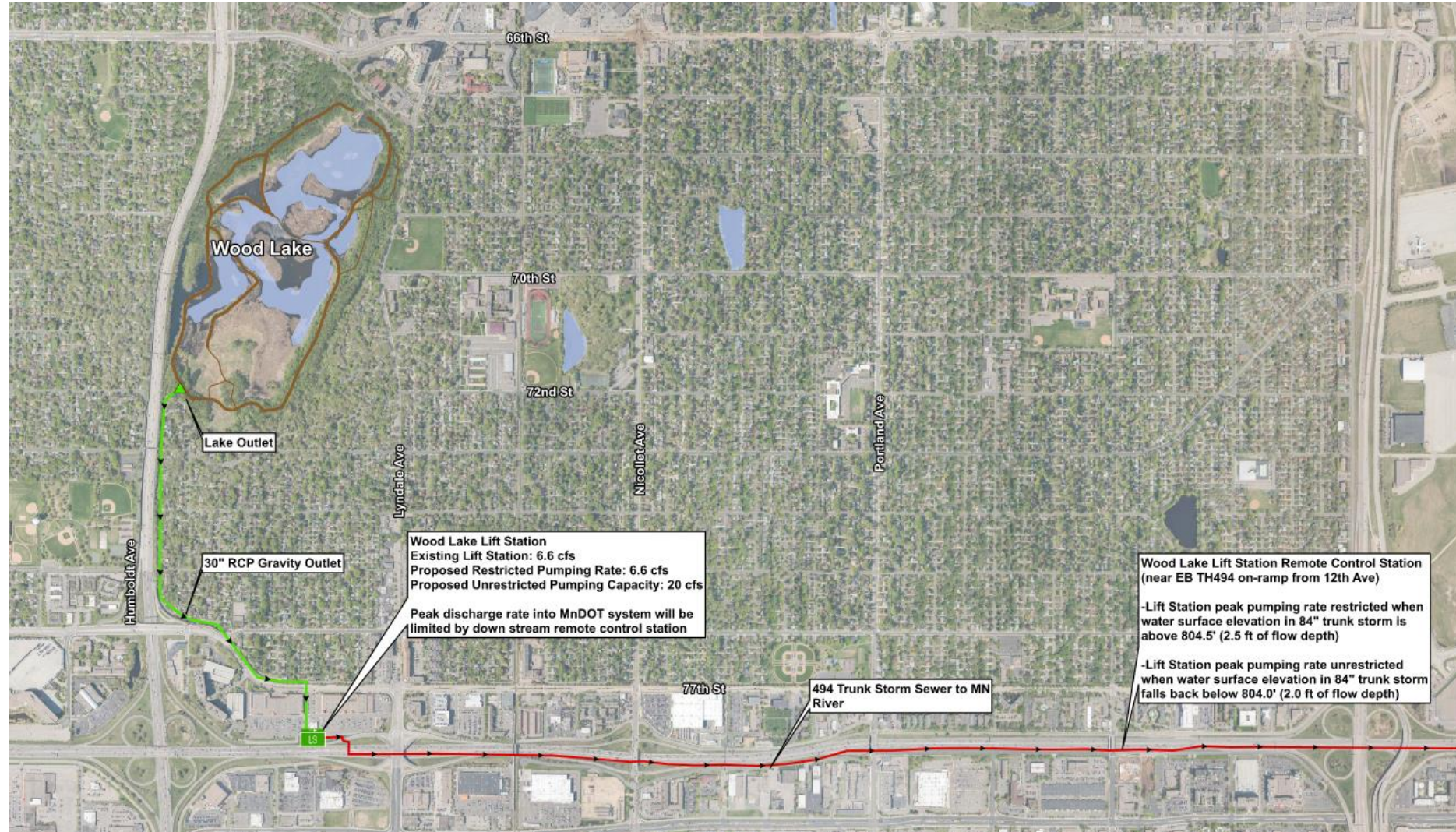


**ENVIRONMENTAL**

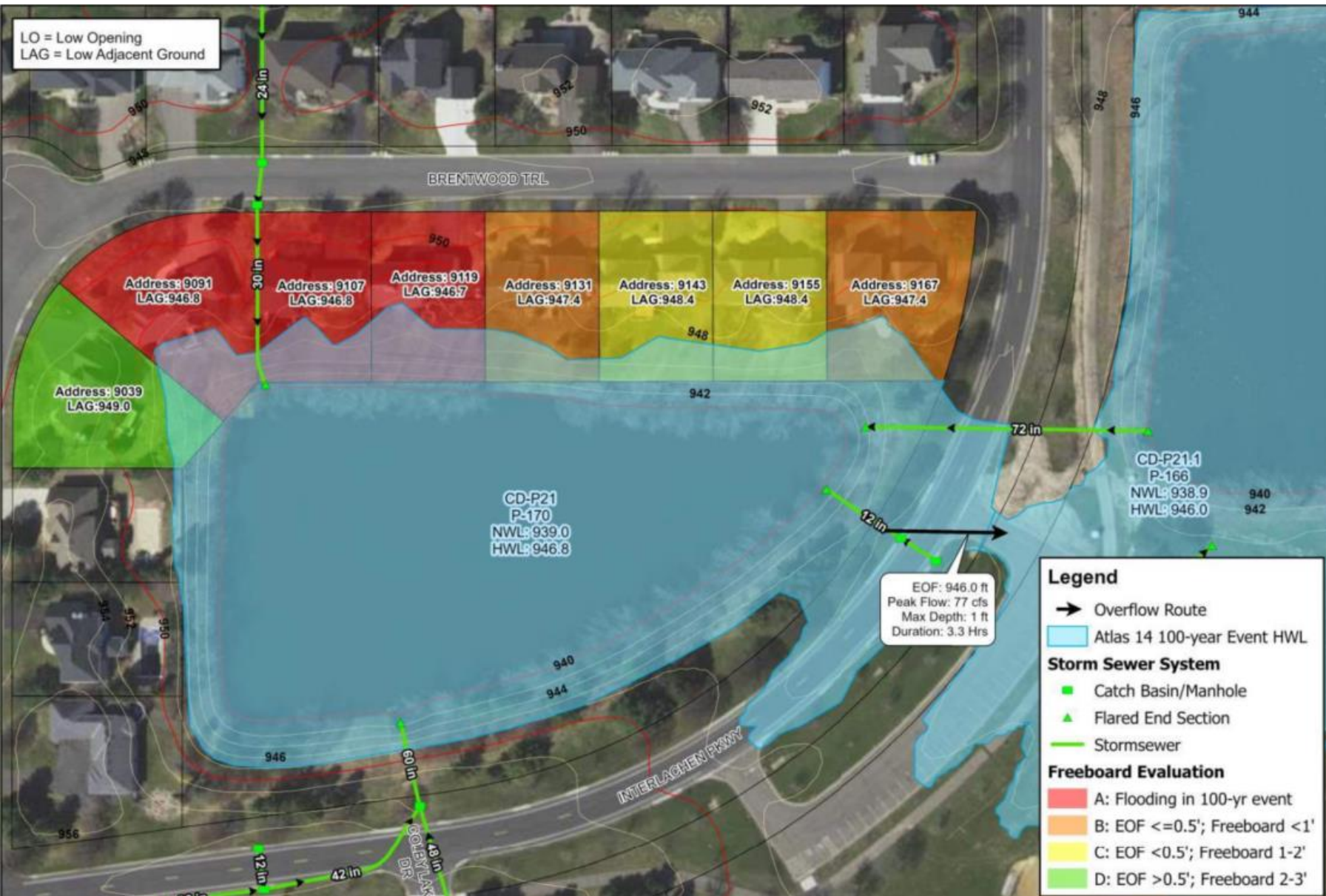


# City of Richfield

## Wood Lake Outlet Improvements



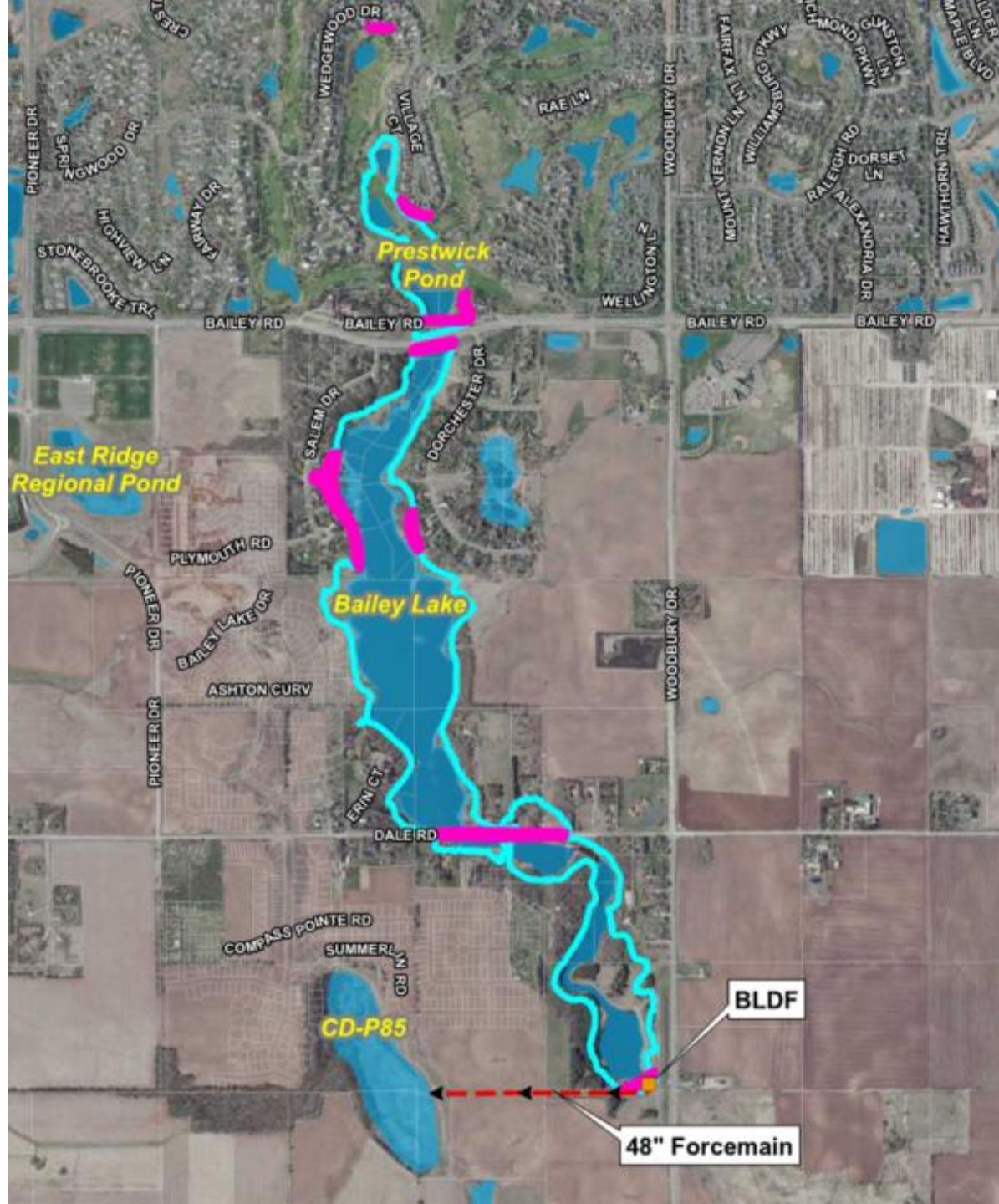




# City of Woodbury

## Atlas-14 Flood Risk Reduction Program





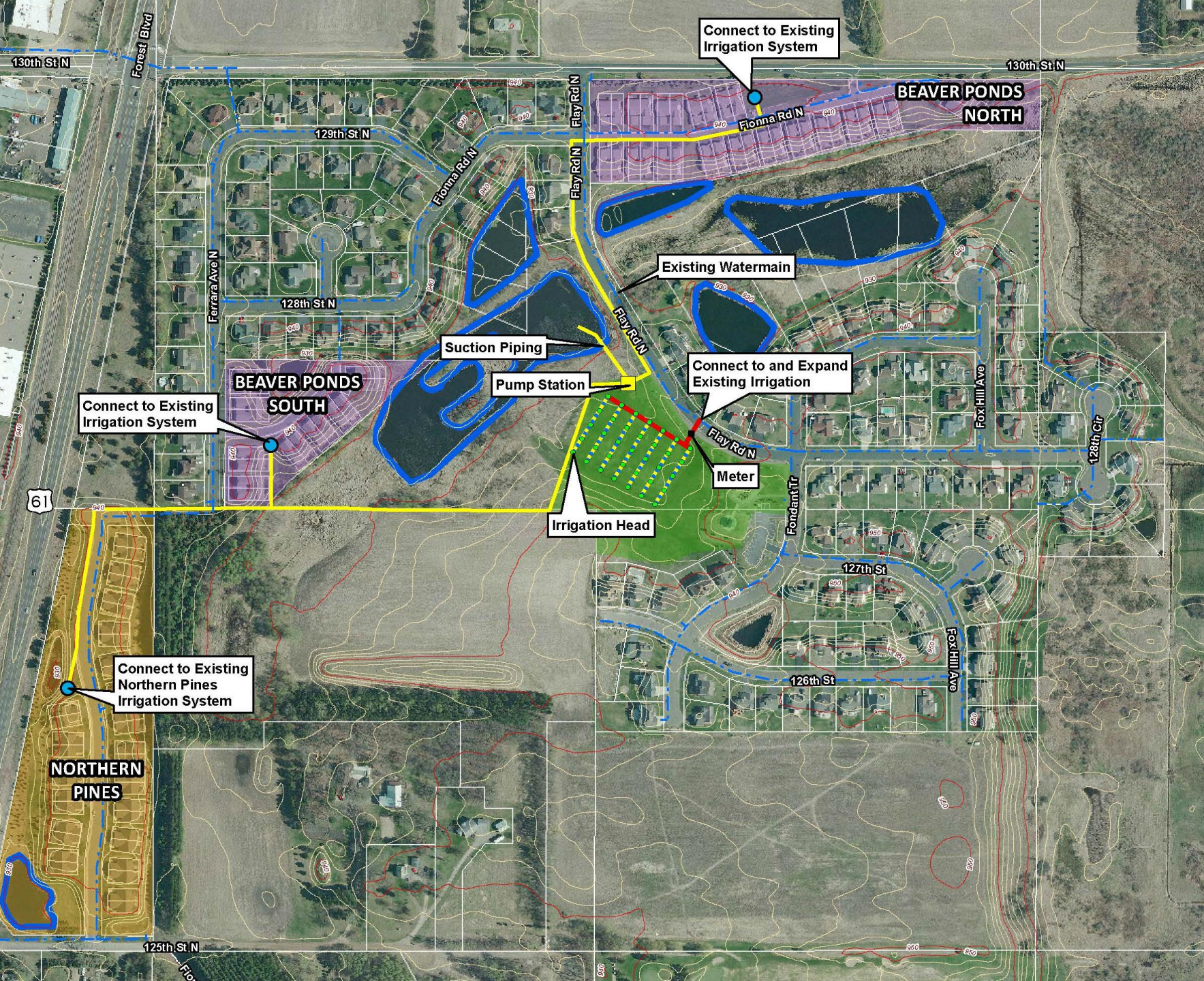
# City of Woodbury

## Bailey Lake

## Discharge Facility

## Risk Assessment





# City of Hugo

## Beaver Park Pond

### Centralized Water Reuse Concept





THANK YOU