



ULI Nashville

EXCELLENCE IN DEVELOPMENT

The Excellence in Development Awards celebrate development that is exceptional in building/site design and financial success, *and* that demonstrates transformational impact — development that sets the bar for its peers, and positively impacts Nashville and Middle Tennessee.

We welcome you to ULI Nashville's 14th Excellence in Development Awards, where we celebrate outstanding development projects and the real estate and land use professionals that create them.

community
best practices
best practices
stability
education

EXCELLENCE IN DEVELOPMENT PRESENTING SPONSOR

Holland & Knight

EXCELLENCE IN DEVELOPMENT PREMIER SPONSORS



EXCELLENCE IN DEVELOPMENT SUPPORTING SPONSORS



MISSION ANNUAL SPONSORS 2024



GIARRATANA

DIAMOND ANNUAL SPONSORS 2024



PLATINUM ANNUAL SPONSORS 2024



HASTINGS



PLATINUM ANNUAL SPONSORS 2024

HDLA



Turner

GOLD ANNUAL SPONSORS 2024



GOLD ANNUAL SPONSORS 2024

SKANSKA

sgs SMITH GEE STUDIO
ARCHITECTURE URBAN DESIGN INTERIORS

SOUTHERN LAND
COMPANY

SG
DESIGN

T.W. FRIERSON
CONTRACTOR, INC.

Terracon
Explore with us

Fallon
THE FALLON COMPANY

**THOMAS
&
HUTTON**

WALKER &
DUNLOP

SILVER ANNUAL SPONSORS 2024

ADAPT

aerial
innovations
SOUTHEAST

Baker Barrios

BCA BARGE
CIVIL
ASSOCIATES

BARGE
DESIGN SOLUTIONS.

BASS
BERRY
SIMS

BELL

benesch

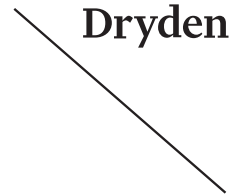
BRIX
BUILDING REVIEW & INSPECTION XPERTS

BWE

CALVERT STREET GROUP

CBRE

SILVER ANNUAL SPONSORS 2024



SILVER ANNUAL SPONSORS 2024



FRIEND ANNUAL SPONSORS 2024



FRIEND ANNUAL SPONSORS 2024

THE ROSE FAEGES-EASTON COMMUNITY IMPACT AWARD

An award was established in 2023 in honor of founding ULI Nashville Director, Rose Faeges-Easton, who retired from ULI Nashville in February 2022.

Rose developed the criteria for ULI Nashville's Excellence in Development Awards. Rose had special affinity for projects that addressed community needs through design and development, as well as projects that engaged community members and featured public/private partnerships.

Projects that show special intentionality and engagement with the community reflect Rose's belief in the power of thoughtful design and development, and her love of Nashville and its many neighborhoods.

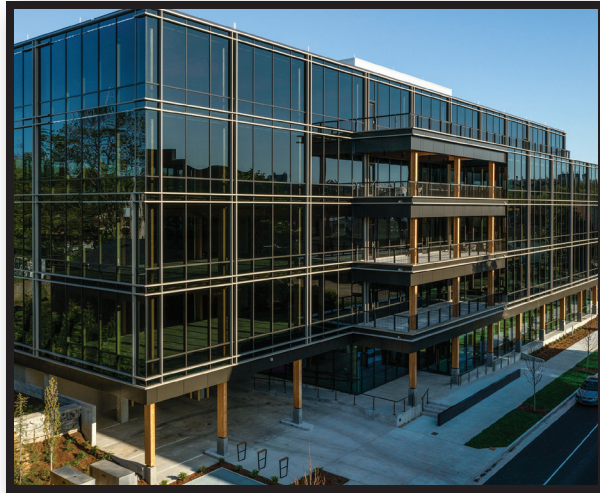
All nominees for the 2024 Excellence in Development Awards have been considered for the Rose Faeges-Easton Community Impact Award.

ULI NASHVILLE EXCELLENCE IN DEVELOPMENT JUDGING CRITERIA

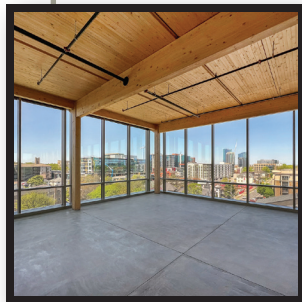
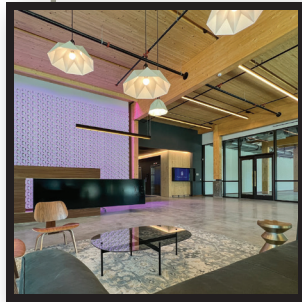
Twenty-one projects were nominated for Excellence in Development Awards in 2024, representing some of the region's best and most innovative development.

Each nominee was judged on criteria that support ULI's mission, "Shape the future of the built environment for transformative impact in communities worldwide." The judges deliberated the merits of each project per the Awards evaluation criteria:

- Market acceptance, financial viability, and operational stability.
- Excellence and innovation in several, related areas including land use, design, construction, economics, sustainability/environmental sensitivity, and equity.
- Noteworthy use of value-added elements such as:
 - public/private/non-profit partnerships,
 - consideration of affordability,
 - promotion of healthy lifestyles,
 - response to a demonstrated community need,
 - reflection of the character of the community, or
 - catalytic impact on other development or a community.
- Worthy of emulation — creates a high standard of industry excellence, sets a new bar, or stands out among others.



1030 Music Row

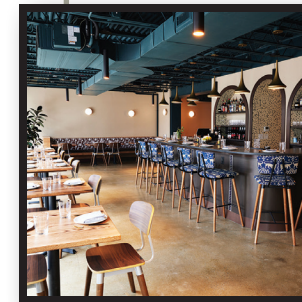
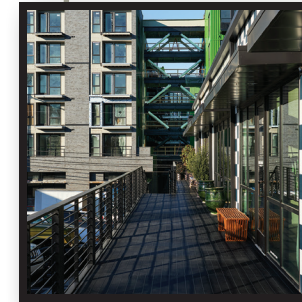


- Developer
- Owner
- Architect
- Contractor
- Landscape Architect
- Civil Engineer
- Finance/Banking
- Transportation Engineer
- Geo Professionals
- Law Firm
- Signage/Wayfinder
- MEP Engineer
- Timber Structural Engineer
- Structural Engineer

- Hamilton Development, LLC**
- Music Row 3, LLC**
- Anecdote Architectural Experiences**
- Turner Construction**
- Hawkins Partners, Inc.**
- Barge Civil Associates**
- Pinnacle Financial Partners**
- KCI Technologies, Inc.**
- Professional Service Industries, Inc.**
- Bradley Arant Boult Cummings, LLP**
- Bennu Enterprises**
- Power Management Corporation**
- StructureCraft**
- EMC Structural Engineers**



609 MERRITT

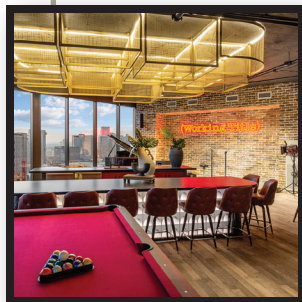


- Developer/Owner
- Architect
- Contractor
- Civil Engineer
- Finance/Banking
- Law Firm

- Urban Grout Commercial Real Estate**
- Pfeffer Torode Architecture**
- Carter Group, LLC**
- Fulmer Lucas**
- First Farmers**
- Holland & Knight**



Albion in the Gulch

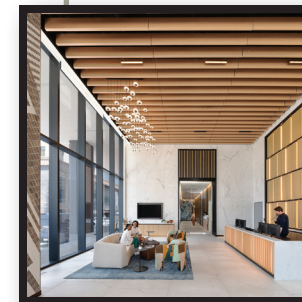
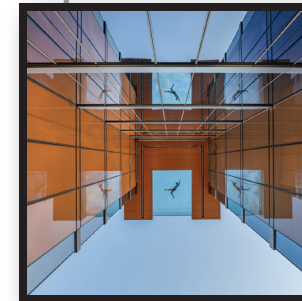


Developer/Owner
 Architect
 Contractor
 Landscape Architect
 Civil Engineer
 Transportation Engineer
 Law Firm
 Signage/Wayfinder
 MEP Engineer

Albion Residential
Hartshorne Plunkard Architecture
Clark Construction Group, LLC
HDLA Landscape Architects
Barge Civil Associates
KCI Technologies, Inc.
Bradley Arant Boult Cummings, LLP
Solty's Art (Artist: Mosaic Tile and Murals)
I.C. Thomasson and Associates

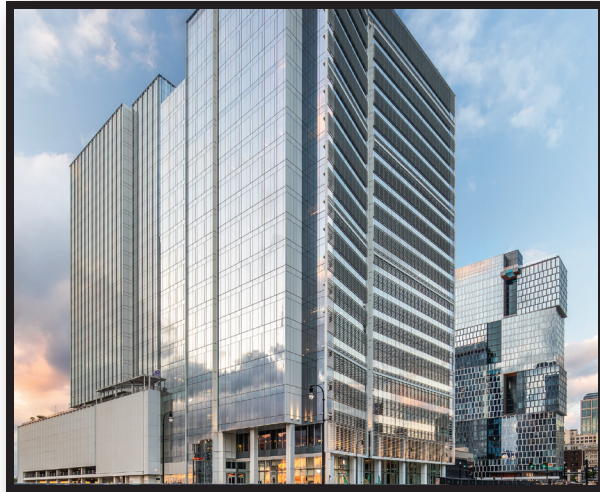


Alcove

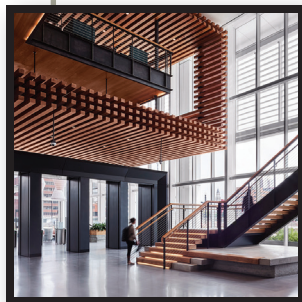
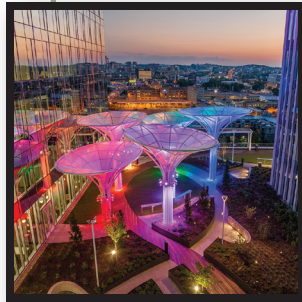


Developer/Owner
 Civil Engineer
 Finance/Banking
 Transportation Engineer
 Geo Professionals
 Law Firm
 Signage/Wayfinder
 Other Development
 Team Members

Giarratana Development
Barge Design Solutions
Walker & Dunlop
Barge Design Solutions
Terranova
Holland & Knight
Jarvis Signs
Giarratana



**Amazon—Nashville
Nashville Yards**



Developer
Architect
Contractor
Landscape Architect
Civil Engineer
Finance/Banking
Transportation Engineer
Geo Professionals
Law Firm
Signage/Wayfinder
Interior Design
Structural Engineer Tower 01
Structural Engineer Tower 02
MEP Engineer

Southwest Value Partners
Gresham Smith
Clark Construction, Inc. / Bell Construction
Hawkins Partners, Inc.
RaganSmith
U.S. Bank
KCI Technologies, Inc.
GEI Consultants, Inc.
Spencer Fane Bone McAllester
RSM Design
Gresham Smith
Walter P. Moore
Stanley D. Lindsey and Associates, Ltd.
Alvine Engineering



Antiques Building

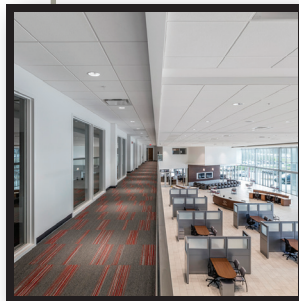
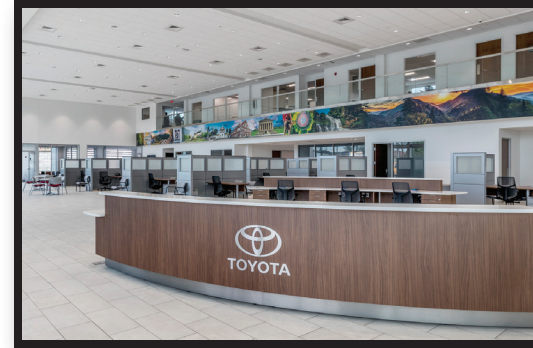


Developer
Architect
Contractor
Contractor
Landscape Architect
Civil Engineer
Geo Professionals
Law Firm
Other Development
Team Members

SomeraRoad
Manuel Zeitlin Architects
JE Dunn Construction
DWC Construction
Kimley-Horn
Kimley-Horn
Kimley-Horn
Kaalberg Law
SomeraRoad



Beaman Toyota

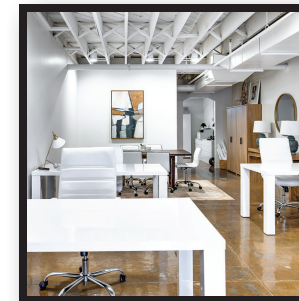
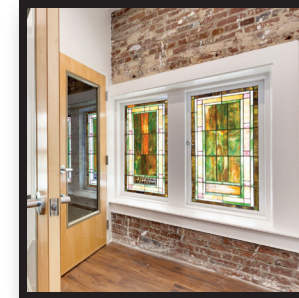


Developer/Owner
 Architect
 Contractor
 Landscape Architect
 Civil Engineer
 Transportation Engineer
 Geo Professionals
 Signage/Wayfinder

Hudson Automotive Group
Reline Design Group
Choate Construction
Kimley-Horn
Kimley-Horn
Kimley-Horn
ECS Southeast, LLC
Pattison Sign



Eastwood Village



Developer
 Developer
 Owner
 Owner
 Architect
 Contractor
 Design
 Finance/Banking
 Law Firm
 Mechanical &
 Plumbing Engineer
 Electrical Engineer

Vintage South Development
Legacy Partners
Vintage South Development
Legacy Partners
Daniels Chandler
Vintage South Development
Dale & Associates
Wilson Bank and Trust
Leach & Associates
Wilson & Girgenti
K2 Engineering



Harpeth Commons



Developer
Architect
Contractor
Landscape Architect
Civil Engineer
Transportation Engineer
Signage/Wayfinder

MEP Engineer
Structural Engineer
Envelope Testing

Highwoods
HASTINGS Architecture
Brasfield & Gorrie
Hawkins Partners, Inc.
RaganSmith
KCI Technologies, Inc.
McCoy Design
505 Design
Power Management Corporation
EMC Structural Engineers
ECS Southeast, LLC



Meharry Living Learning Center

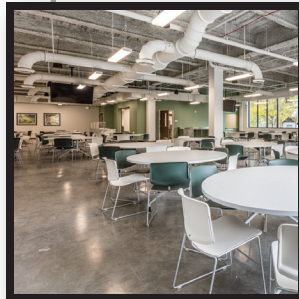


Owner
Architect
Contractor
Landscape Architect
Civil Engineer
Transportation Engineer
Geo Professionals
Construction Manager

Meharry Medical College
Moody Nolan
Whiting-Turner
EDGE
Catalyst Design Group
THA Consulting, Inc
S&ME, Inc.
Pillars Development, LLC



Nashville Women's Rescue Mission

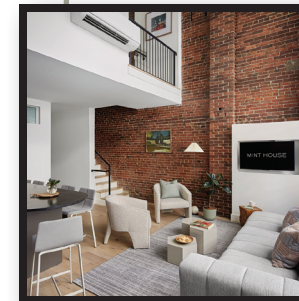
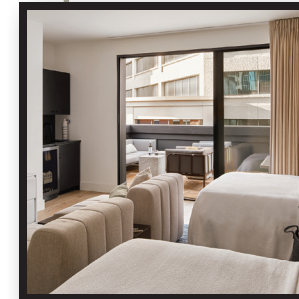


Developer/Owner
 Architect
 Contractor
 Landscape Architect
 Civil Engineer
 Finance/Banking
 Geo Professionals
 Signage/Wayfinder
 Interior Design

Nashville Rescue Mission
Design Constructors, Inc.
T.W. Frierson Contractor, Inc.
HDLA
Barge Civil Associates
JHME Real Estate Advisors
ECS Southeast, LLC
Bennu Enterprises, Inc.
Inner Design Studio



note Nashville



Developer/Owner
 Architect
 Contractor
 Finance/Banking
 Other Development
 Team Members

Historic Restorations LLC
Daniels Chandler
Eshelman Construction
Reliant Bank
Historic Restorations LLC



**Red Oak Flats &
Red Oak Townhomes**



Developer/Owner
Architect
Contractor
Landscape Architect
Civil Engineer
Finance/Banking
Transportation Engineer

**MDHA — Metropolitan Development and
Housing Agency**
EOA Architects
RG Anderson
HDLA
Kimley-Horn
Pinnacle Bank
Kimley-Horn



REI Distribution Center 4

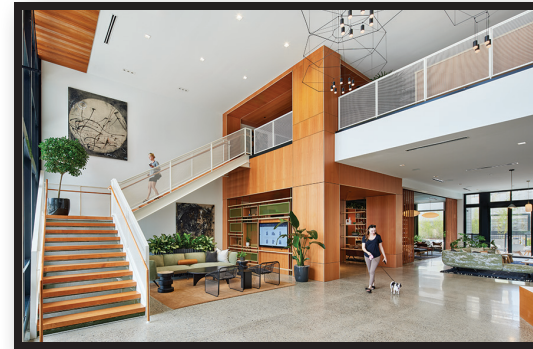


Developer
Owner
Architect
Contractor
Landscape Architect
Civil Engineer
Transportation Engineer
Geo Professionals
MEP Engineer
LEED Consultant
Interior Designer
Other Development
Team Members

Al. Neyer
REI Co-op
A.N Architects
Al. Neyer
Cumberland Landesign
Warren & Associates
R.G. Phillips Consulting, LLC
TTL, Inc.
I.C. Thomasson Associates, Inc.
HASTINGS Architecture
ASD | SKY
Al. Neyer



Standard Assembly



Developer
 Project Manager
 Architect of Record
 Architect
 Contractor
 Landscape Architect
 Civil Engineer
 Transportation Engineer
 Geo Professionals
 Signage/Wayfinder
 Structural Engineer
 MEP Engineer
 AV and Security Consultant
 Property Manager

Atlas Real Estate Partners / HY Ventures / Wedgewood Avenue
JLL
EOA Architects
Manuel Zeitlin Architects
Hardaway Construction
Hawkins Partners, Inc.
Fulmer Lucas
KCI Technologies, Inc.
Terracon
McCoy Design
EMC Structural Engineers
Power Management Corporation
RealPage Inc.
Greystar



Tanger Nashville



Developer
 Owner
 Architect
 Contractor
 Landscape Architect
 Civil Engineer
 Transportation Engineer
 Geo Professionals
 Signage/Wayfinder

Century Farms
Tanger Outlet Centers
Dorsky + Yue International, LLC
Choate Construction Company
Kimley-Horn
Kimley-Horn
Kimley-Horn
ECS Southeast, LLC
Tanger Outlet Centers



Ten21 at Five Points

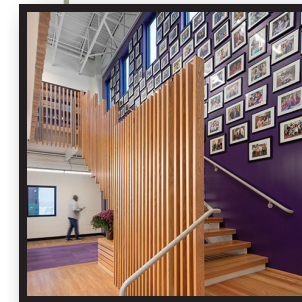


Developer/Owner
 Architect
 Interior Designer
 Contractor
 Civil Engineer
 Interior Designer
 MEP Engineer
 Structural Engineer

S&S Property Management
EOA Architects
EOA Architects
MCR Group
Barge Civil Associates
Design Object
Power Management Corporation
EMC Structural Engineers



Tennessee Justice Center



Developer/Owner
 Architect
 Contractor
 Landscape Architect
 Civil Engineer
 Geo Professionals
 Signage/Wayfinder
 Mechanical Engineer
 Electrical Engineer
 Plumbing and Fire
 Protection Engineer
 Structural Engineer

The Tennessee Justice Center
architect WORKSHOP
PBG Builders
Studio Topography
Collected Civil Engineering
GEOTEK Engineering
architect WORKSHOP
LEE Company
Thompson Electric
Dewberry I Edmonds
EMC Structural Engineers



The 808 at Skyline Ridge

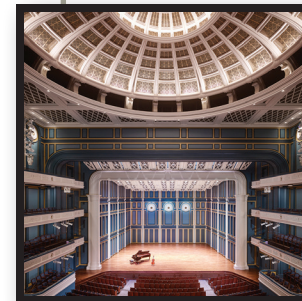
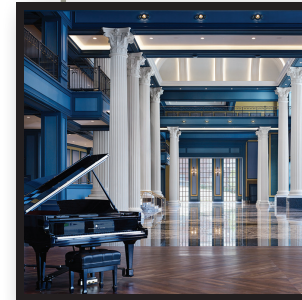


Developer/Owner
 Architect
 Contractor
 Landscape Architect
 Civil Engineer
 Finance/Banking
 Equity
 Transportation Engineer
 Law Firm

LDG Development, LLC
Studio A
Xpert Design and Construction
Catalyst Design Group
Catalyst Design Group
First Horizon Bank
R4 Capital
KCI Technologies, Inc.
Reno Cavanaugh



The Fisher Center for the Performing Arts at Belmont University



Developer/Owner
 Architect
 Contractor
 Landscape Architect
 Civil Engineer
 Transportation Engineer
 Structural Engineer
 Acoustician
 Theatre Planner
 Sustainability Consultant
 MEP Engineer
 Architectural Lighting

Belmont University
ESa
R.C. Mathews Contractor
HDLA
Catalyst Design Group
KCI Technologies, Inc.
Ross Bryan Associates
Akustiks
Theatre Projects Consultants
SSRCx
I.C. Thomasson Associates
Reed Burkett Lighting Design

Turnip Truck—Charlotte Avenue



Owner
Owner, CFO
Architect
Contractor
Landscape Architect
Civil Engineer
Supermarket & Grocery
Design Specialists
MEP Engineer

Turnip Truck
Turnip Truck
Manuel Zeitlin Architects
Crain Construction, Inc.
Hawkins Partners, Inc.
Barge Civil Associates
StoreMasters
DC Engineering



Holland & Knight is proud to sponsor the

ULI Nashville Excellence in Development Awards.

We support the Urban Land Institute's mission to shape the future of the built environment and congratulate all of this year's nominees for their positive transformational impact on Middle Tennessee.

Holland & Knight

www.hklaw.com

Nashville, TN | 615.244.6380

Copyright © 2024 Holland & Knight LLP All Rights Reserved

ALBION

RESIDENTIAL

Building communities at the intersection of style and culture.

WWW.ALBION-RESIDENTIAL.COM
DEVELOPMENT / ACQUISITION / ASSET MANAGEMENT



Albion Music Row



Albion in the Gulch



Albion Evanston



Albion Oak Park

CINCINNATI PITTSBURGH NASHVILLE RALEIGH



REI Distribution Center 4
Lebanon, TN

When you're responsible for a career-defining real estate project, you need a dedicated and determined partner who's invested as you are.

— Learn more at neyer.com.



cremona custom built



CONGRATULATIONS TO THE NOMINEES AND WINNERS OF THE
2024 ULI Nashville Excellence in Development Awards

We're excited to support the growing real estate and development community in Nashville. Our future-focused team of specialists can help measure every move and evaluate every risk with data-driven insights.

Partner with Aprio for audit, tax, and business advisory services. [Visit aprio.com](http://aprio.com)



EMC Structural Engineers, P.C. is located in Nashville, Tennessee. We provide full-service structural engineering services for a variety of industries, which include healthcare, hospitality, educational, and commercial in 50 states, the District of Columbia, and Puerto Rico.



Tanger NASHVILLE





Special Thanks

ULI Nashville thanks the following volunteers, supporters and partners for their time, energy and expertise.

Sheila Dial-Barton, *EOA Architects*, ULI Nashville Chair

Chip Howorth, *Adapt Development*, ULI Nashville Chair of Mission Advancement

Nicole Robben, *Petros PACE*, ULI Nashville Treasurer

Edward Henley, *Pillars Development*, Chair of Governance Committee

John Dwyer, *JAG Tennessee*, Emcee

Kaylen Harrison, *Southeast Venture*, ULI Nashville Marketing Committee Co-chair

Katie Wainman, *Hardaway Construction*, ULI Nashville Marketing Committee Co-chair

Stacy Tilney, ULI Nashville Marketing Committee

Aerial Innovations Southeast, Inc. — Event Photography

ARC Document Solutions — Nominated Project and Sponsor Banners

Cremona Custom Built — Rose Faeges-Easton Community Impact Award Creation

Gannaway Design — Graphic Design and Excellence in Development Award Creation

Harbinger House — Videography

GEODIS Park — Judges' Interview Venue

Holland & Knight — Nominee Representative Interview Venue

The Mathews Company — Judges' Tour Lunch Venue

Southeast Venture — Judges' Tour Lunch Venue

2024 Excellence in Development Awards Judges:

Andre Brumfield, Cities Sector Leader & Principal, *Gensler*

Patti Earnest, Chief Investment Officer, *Roadside Development LLC*

Stuart Proffitt, Founding Partner, *Proffitt Dixon Partners*

ULI Nashville Programming & Awards Committee:

Bailie Klages, Chair, *Commerce Bank*

Connor Bailey, *DPR Construction*

Dennis Daniels, *WBA Architecture*

Sheila Dial-Barton, *EOA Architects*

Sheena Francis, *Kimley Horn*

Scott Lockyear, *Georgia Pacific*

Bart Mackey, *Sesco Lighting*

Kimberly Pouilly, *Elliott Davis*

Doug Sharp, *Sharp Urban Planning*

Pam Tarkington, *Genesis Engineering Group*

Alisha Wix, *Skanska*

Thank you to Robert Looper, III, of City Now Next, for special media coverage of the Excellence in Development Awards.

ULI Nashville

ULI Nashville is a trusted convener, collaborator, and communicator of best practices in all aspects of city-building. With nearly 950 members in Middle Tennessee representing the spectrum of land use and development occupations, ULI Nashville engages its members in networking, sharing best practices and thought leadership.

For more information about ULI Nashville — member benefits, events, and how to engage — visit www.Nashville.uli.org or email nashville@uli.org.

ULI Nashville's work is driven by its members. For information on becoming a ULI member, visit www.uli.org and click on "Join ULI."

ULI Nashville values its Annual Sponsors, who support our year-long educational, professional development, member networking and community outreach programming. For a complete list of ULI Nashville Annual Sponsors, visit <https://nashville.uli.org/sponsorship/>.

ULI Nashville is on social media —



About ULI

Established in 1936, the Urban Land Institute has nearly 50,000 members. Through member involvement and information resources, ULI has set the standard of excellence in development practice. ULI has long been recognized as one of the world's most respected and widely-cited sources of objective information on land planning, real estate development, placemaking, and smart growth.

ULI's Mission Priorities

- Educating the Next Generation of Diverse Real Estate Leaders
- Decarbonizing the Real Estate Sector and Accelerating Progress to Net Zero
- Increasing Housing Attainability in Communities around the World

ULI is a 501(c)(3) nonprofit research and education organization supported by its members worldwide.

