



# ULI Nashville

---

## EXCELLENCE IN DEVELOPMENT ...UNMASKED!

A SPECIAL EVENING VIRTUALLY CELEBRATING THE ULI NASHVILLE  
EXCELLENCE IN DEVELOPMENT AWARDS. THIS UNIQUE EVENT WILL  
SHOWCASE ULI NASHVILLE'S ENDURING COMMITMENT TO COMMUNITY  
AND LIVABILITY, VALUED PARTNERS AND MEMBERS, AND EXCELLENCE  
IN DEVELOPMENT, DESIGN AND USE OF LAND.

community  
best practices  
education  
livability  
education

## DIAMOND AWARDS SPONSORS 2020

---

FIFTH +  
BROADWAY™

Brookfield Properties

core

## DIAMOND AWARDS SPONSORS 2020

---

 Highwoods®  
PROPERTIES

 PILLARS  
DEVELOPMENT  
Curiosity • Creativity • Community

GIARRATANA

 Hawkins Partners, Inc.  
landscape architects

Turner

## GOLD AWARDS SPONSORS 2020

---

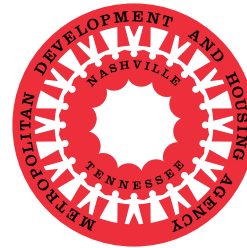


## GOLD AWARDS SPONSORS 2020

---



I. C. Thomasson Associates, Inc.





## SILVER AWARDS SPONSORS 2020

---



## SILVER AWARDS SPONSORS 2020

---



## SILVER AWARDS SPONSORS 2020

---



## SILVER AWARDS SPONSORS 2020

---



## SILVER AWARDS SPONSORS 2020

---



## SILVER AWARDS SPONSORS 2020

---



Architecture  
Interior Design  
Planning



TM Partners, PLLC  
Architecture Interiors Planning



## **ULI Nashville Excellence in Development Awards 2020...*Unmasked!***

The ULI Nashville Excellence in Development Awards provides an evening to come together to celebrate ULI Nashville's Excellence in Development Awards. The Awards represent the mission that strong communities, good development partners, and excellence in development and design should be recognized, and best practices shared and celebrated.

The current challenges we find ourselves and our community in can easily curtail that lofty mission; and certainly change the way in which we can "come together" safely this year.

However, in these difficult times, ULI Nashville showcases and supports the ways our community and our ULI members are resilient and excel in helping shape our future and how, working together, we overcome these obstacles to build back better.

## **Judging / Criteria 2020**

**Interviews with representatives from all of the 21 projects will be posted for viewing on the ULI Nashville website. You are invited to watch each of those informative project interviews on the excellent projects of the 2020 ULI Nashville Excellence in Development Awards.**

Projects submitted in 2020 represent some of our region's best development.

Each entry was judged on criteria that support ULI's commitment to best practices in the use of land. The judges used great deliberation in assessing each project according to the Awards' Evaluation Criteria:

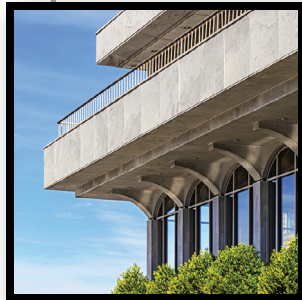
- Demonstrates Excellence and Innovation in Development / Design / Construction
- Responds to a Community Need and Added-Value Features, such as
  - Environmental Stewardship
  - Builds for a Healthier Community
  - Provides an Affordable Product
- Provides a Catalytic Effect
- Demonstrates Financial Success
- Is Worthy of Emulation — is a market leader and demonstrates a high standard of industry excellence.

*"We were presented with a wide range of interesting and exemplary projects that reflect the diversity of your community. Each one clearly demonstrated excellence in many of the evaluation criteria... making our decisions very challenging!" — Judges*



## 225 POLK AVENUE

You can find valuable information about this excellent project [HERE](#).



- Developer
  - Architect
  - Contractor
  - Landscape Architect
  - Civil Engineer
  - Finance/Banking
  - Attorney
  - Leasing Agent
  - Structural Engineer
  - Electrical Subcontractor
  - Acoustic Consultant
  - Lighting Vendor
  - Custom Millwork
  - Marble
  - Glass
  - Terrazzo
- Hastings**
  - Hastings**
  - Carter Group, LLC**
  - HDLA**
  - Barge Cauthen & Associates**
  - Pinnacle Financial Partners**
  - Waller**
  - Eakin Partners, LLC**
  - EMC Structural Engineers, P.C.**
  - Volunteer Electric**
  - Charles M. Salter Associates, Inc.**
  - Sesco Lighting**
  - Cumberland Architectural Millwork, Inc.**
  - Intrepid Enterprises, Inc.**
  - Alexander Metals**
  - Rosa Mosaic**



## ALLOY

You can find valuable information about this excellent project [HERE](#).



- Developer
  - Architect
  - Architect
  - Architect
  - Contractor
  - Contractor
  - Contractor
  - Landscape Architect
  - Civil Engineer
  - Finance/Banking
  - Finance/Banking
  - Sales
  - Structural Engineer
  - Modular Structural, Mechanical & Plumbing
  - Modular Electrical Engineer
  - Site Electrical & Fire Protection Engineer
- Core Development**
  - EOA Architects**
  - DAAD**
  - Manuel Zeitlin Architects**
  - Carter Group LLC**
  - Champion Commercial Structures**
  - Highland Building Group**
  - Hawkins Partners, Inc.**
  - CSDG**
  - Franklin Synergy Bank**
  - First Advantage Bank**
  - City Living Group / Village Real Estate**
  - EMC Structural Engineers, P.C.**
  - R & S Tavares Associates**
  - C & G Engineering, Inc.**
  - Power Management Corporation**





## CAPITOL VIEW BLOCKS D AND E

You can find valuable information about this excellent project here: [Capitol View Nashville](#), [Block D Office](#), [Block D Retail](#), [Block E Office](#), and [Block E Retail](#).



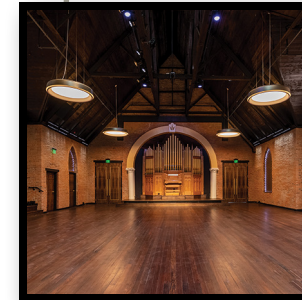
Developer  
Architect  
Contractor  
Landscape Architect  
Civil Engineer  
Finance/Banking  
Transportation Engineer  
Geo Professionals  
Environmental Contractor  
Interior Design

**Boyle Investment Company**  
**Cooper Carry**  
**Hoar Construction**  
**K V+D**  
**Barge Design Solutions**  
**Northwestern Mutual**  
**Barge Design Solutions**  
**TTL USA**  
**TVG Environmental, LLC**  
**Cooper Carry**



## CLEMENTINE HALL

You can find valuable information about this excellent project [HERE](#).



Developer  
Architect  
Contractor  
Civil Engineer  
Finance/Banking  
MEP

**Dragon Park, LLC**  
**DAAD**  
**Steelhead Building Group, LLC**  
**CSDG**  
**Volunteer State bank**  
**Edmonds Engineering**





## EXPLORE! COMMUNITY SCHOOL

You can find valuable information about this excellent project [HERE](#).



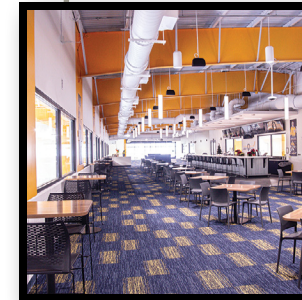
Developer  
Owner  
Architect  
Contractor  
Landscape Architect  
Civil Engineer  
Geo Professionals  
Structural Engineer  
Structural Engineer  
Interior Designer

**MDHA**  
**MDHA**  
**Johnson Johnson Crabtree Architects**  
**R.G. Anderson Company, Inc.**  
**Kimley – Horn and Associates Inc.**  
**Kimley – Horn and Associates Inc.**  
**Terracon Consultants, Inc.**  
**EMC Structural Engineers, P.C.**  
**Envision Advantage, LLC**  
**WPI Studio**



## FORD ICE CENTER BELLEVUE AND BELLEVUE COMMUNITY CENTER

You can find valuable information about this excellent project [HERE](#).



Developer  
Architect  
Contractor  
Landscape Architect  
Civil Engineer  
Geo Professionals  
Structural Engineer

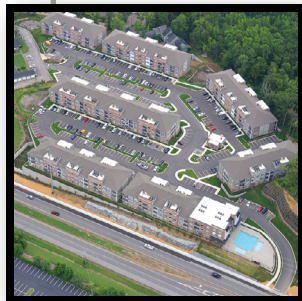
**Metro and Davidson County Dept. of General Services**  
**Lose Design**  
**American Constructors, Inc.**  
**Lose Design**  
**Lose Design**  
**Terracon Consultants, Inc.**  
**Latta Structural Engineers, LLC**





## HERMITAGE FLATS

You can find valuable information about this excellent project [HERE](#).



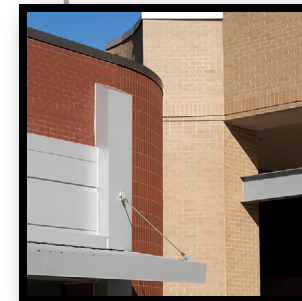
Developer  
Architect  
Contractor  
Landscape Architect  
Civil Engineer  
Finance/Banking  
Transportation Engineer  
Geo Professionals  
Land Surveyor

**Elmington Capital Group, LLC**  
**Shapiro & Company Architects, P.C.**  
**BACAR Constructors, Inc.**  
**Kimley – Horn and Associates Inc.**  
**Kimley – Horn and Associates Inc.**  
**First Horizon Bank**  
**Kimley – Horn and Associates Inc.**  
**Terracon Consultants, Inc.**  
**Ragain-Smith Associates, Inc.**



## HILL CENTER BRENTWOOD

You can find valuable information about this excellent project [HERE](#).



Developer  
Architect  
Contractor  
Landscape Architect  
Civil Engineer  
Structural Engineer  
Structural Engineer

**H.G. Hill Realty Company, LLC**  
**Orcutt | Winslow**  
**Crain Construction, Inc.**  
**Hawkins Partners, Inc.**  
**Barge Cauthen + Associates**  
**EMC Structural Engineers, P.C.**  
**I.C. Thommason Associates, Inc.**





## HUNTERS STATION

You can find valuable information about this excellent project [HERE](#).



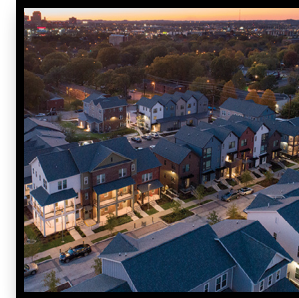
Developer  
Architect  
Architect  
Contractor  
Civil Engineer  
Finance/Banking  
MEP Engineer  
Structural Engineer

**Hunters Campus LLC**  
**Strada Architecture LLC**  
**Remick Architecture**  
**Biscan Construction**  
**Anderson, Delk, Epps & Associates**  
**Fresh Capital LLC**  
**Allen & Shariff Engineering LLC**  
**Atlantic Engineering Seervices**



## KIRKPATRICK PARK

You can find valuable information about this excellent project [HERE](#).



Developer  
Architect  
Contractor  
Landscape Architect  
Civil Engineer  
Finance/Banking  
Transportation Engineer  
Geo Professionals  
Structural Engineer  
MEP Engineer  
Interior Design  
Specifications Consultant  
Green Building Consultant

**MDHA**  
**Smith Gee Studio**  
**R.G. Anderson Company**  
**Hawkins Partners, Inc.**  
**Barge Cauthen & Associates**  
**Walker Dunlop**  
**Kimley – Horn and Associates Inc.**  
**Kimley – Horn and Associates Inc.**  
**Genesis Engineering Group**  
**Genesis Engineering Group**  
**Smith Gee Studio**  
**Specs + Details**  
**Wilmot Inc.**





## L & L MARKET

You can find valuable information about this excellent project [HERE](#) and [HERE](#).



Developer  
Architect  
Contractor  
Landscape Architect  
Civil Engineer  
Finance/Banking

**L&L Market**  
**Southeast Venture, LLC**  
**Dowdle Construction Group, LLC**  
**AI Wilkinson Landscape Architect**  
**Barge Cauthen & Associates**  
**Wilson Bank & Trust**



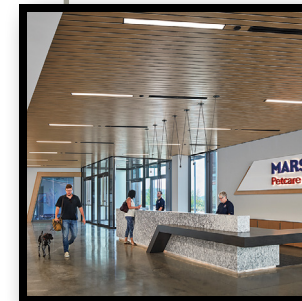
## MARS PETCARE AT OVATION EAST END

You can find valuable information about this excellent project [HERE](#).



Developer  
Architect  
Contractor  
Landscape Architect  
Civil Engineer  
Structural Engineer  
Lighting  
MEP Engineering  
Graphics  
Furniture

**Highwoods Properties**  
**Hastings**  
**Brasfield & Gorrie, LLC**  
**Hawkins Partners, Inc.**  
**Barge Cauthen & Associates**  
**EMC Structural Engineers, P.C.**  
**LAM Partners**  
**Empower Electric**  
**Cloud Gehshan Associates**  
**Alfred Williams & Company**







## OAK BARREL OFFICE BUILDING

You can find valuable information about this excellent project [HERE](#).



Developer  
Owner  
Architect  
Contractor  
Landscape Architect  
Civil Engineer  
Other Dev. Team Members  
Leasing & Property Mgmt

**Creed Investment Company**  
**Oak Barrel Office Building, LLC**  
**Pfeffer Trorode Architecture**  
**Perkins Construction**  
**Heibert + Ball Land Design**  
**Fulmer Engineering, LLC**  
**Premier Parking**  
**Snipes Properties**



## SHERIFF'S OFFICE DOWNTOWN COMPLEX

You can find valuable information about this excellent project [HERE](#).



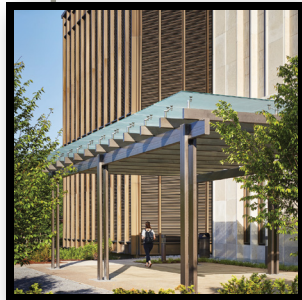
Developer  
Architect  
Contractor  
Landscape Architect  
Civil Engineer

**Metropolitan Government of Nashville & Davidson County**  
**Hellmuth, Obata + Kassabaum (HOK)**  
**Bell & Associates Construction**  
**Hellmuth, Obata + Kassabaum (HOK)**  
**Stantec**



## TENNESSEE STATE MUSEUM

You can find valuable information about this excellent project [HERE](#).



Owner  
Architect  
Architect  
Contractor  
Landscape Architect  
Civil Engineer  
Geo Professionals  
Structural Engineer  
MEP Engineers  
Exhibit Designer  
AV and Security  
Wayfinding/Signage  
Commissioning/  
Environmental  
Project Manager  
Project Manager  
Exhibit Contractor

State of TN, Department of General Services  
**EOA Architects**  
**HGA Architects & Engineers**  
**Turner Construction Co.**  
**HDLA**  
**S&ME**  
**S&ME**  
**EMC Structural Engineers, P.C.**  
**HGA Architects & Engineers**  
**Gallagher & Associates**  
**Shen Milson & Wilke**  
**McCoy Design**  
**Smith Seckman Reid Inc.**  
  
**Compass**  
**Pillars Development, LLC**  
**Design and Production, Inc.**



## TERRA HOUSE AND RIVER HOUSE

You can find valuable information about this excellent project here: [River House Apartments](#), [River House](#) and [Terra House](#).



Developer  
Architect  
Contractor  
Landscape Architect  
Civil Engineer  
Finance/Banking  
Geo Professionals  
Structural Engineer  
Mechanical Plumbing  
Electrical & Fire Protection  
Engineers  
Furniture Procurement  
Lighting Consultant  
Environmental Graphics  
LEED for Homes/  
Green Building Consultant

**SWH Residential Partners, LLC**  
**Smith Gee Studio**  
**R.C. Mathews Contractor**  
**Hodgson Douglas Landscape Architecture**  
**Littlejohn Engineering**  
**MetLife**  
**Intertek-PSI**  
**Genesis Engineering Group**  
**Genesis Engineering Group**  
  
**DEI**  
**CTG Lighting**  
**McCoy Design**  
**Wilmot Inc.**





## TREATY OAKS COTTAGES

You can find valuable information about this excellent project [HERE](#).



Developer  
Owner  
Contractor  
Contractor  
Landscape Architect  
Civil Engineer  
Finance/Banking  
Geo Professionals  
Other Dev. Team Members

**MiKen Development, LLC**  
**HR Properties of Tennessee**  
**Paragon Group**  
**Highland Homes**  
**CSDG**  
**CSDG**  
**Pinnacle Financial Partners**  
**Terranova Engineering**  
**Green Ventures**  
**MiKo Inc.**  
**PARKS in Green Hills**  
**Bell Settlement Services**



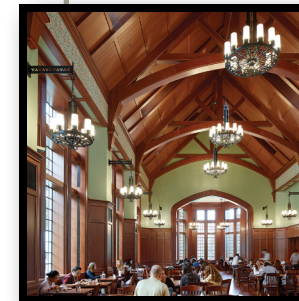
## VANDERBILT UNIVERSITY—E. BRONSON INGRAM RESIDENTIAL COLLEGE

You can find valuable information about this excellent project [HERE](#).



Developer  
Architect  
Contractor  
Landscape Architect  
Civil Engineer  
Geo Professionals  
Structural Engineer  
MEP Engineer  
Food Service  
Acoustics  
Lighting  
Waterproofing

**Vanderbilt University**  
**Hastings**  
**R.C. Mathews Contractor**  
**Hodgson Douglas Landscape Architecture**  
**Barge Cauthen & Associates**  
**TTL, Inc.**  
**EMC Structural Engineers, P.C.**  
**Smith Seckman Reid, Inc.**  
**Ricca Design Studios**  
**Charles M. Salter Acoustics**  
**Coventry Lighting, Inc.**  
**Hixson Consultants, Inc.**





## VERTIS GREEN HILLS

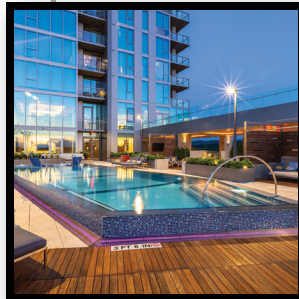
You can find valuable information about this excellent project [HERE](#).



Developer  
Owner  
Architect  
Contractor  
Landscape Architect

Civil Engineer  
Finance/Banking  
Transportation Engineer  
Geo Professionals  
Other Dev. Team Members  
Structural Engineers

**Southern Land Company**  
**Southern Land Company**  
**Hastings**  
**Southern Land Company Commercial Construction**  
**Southern Land Company Planning and Landscape Architecture**  
**Southern Land Company Civil Engineering**  
**M&T Bank**  
**KCI Technologies**  
**Terra Nova Engineering, PLLC**  
**Roger Moore Engineers**  
**Mitchell Mechanical, LLC**



## WEST EASTLAND DEVELOPMENT

You can find valuable information about this excellent project here: [The Bailey](#) and [The Cleo](#).



**The Bailey:** Owner  
Architect  
Contractor  
Landscape Architect  
Civil Engineer  
Finance/Banking  
Structural Engineer  
MEP Engineers

**The Cleo:** Developer  
Architect  
Contractor  
Landscape Architect  
Civil Engineer  
Structural Engineer  
MEP Engineers  
GEO Professionals  
Interior Design  
Environmental Graphics

**The Bailey**  
**Smith Gee Studio**  
**Carter Group**  
**Hodgson Douglas Landscape Architecture**  
**CSDG**  
**First Farmers and Merchants Bank**  
**PWP Structural Engineers**  
**Mp&E Engineering**  
**LIV Development**  
**Smtih Gee Studio**  
**Hoar Construction**  
**Hodgson Douglas Landscape Architecture**  
**CSDG**  
**Genesis Engineering Group**  
**Genesis Engineering Group**  
**Beaver Engineering**  
**Anderson Design Studio**  
**McCoy Design**







## WOODLAND GROVE

You can find valuable information about this excellent project [HERE](#) and [HERE](#).



Developer  
Architect  
Contractor  
Landscape Architect  
Civil Engineer  
Finance/Banking  
Geo Professionals  
Sales & Marketing  
Title & Legal

**Woodland Street Partners, LLC**  
**Van Pond Architect, PLLC**  
**Woodland Street Partners, LLC**  
**Milosi, Inc.**  
**Dale & Associates**  
**Wilson Bank & Trust**  
**Terra Nova Engineering, PLLC**  
**Oak Street Group of Benchmark Realty, LLC**  
**Wagon Wheel Title**



## Special Thanks

ULI Nashville and the ULI Nashville Excellence in Development Awards are indebted to the commitment and hard work of its member volunteers and supporters.

### With Thanks:

John Dwyer, *Jobs for Tennessee Graduates* — Emcee  
Gannaway Design — Graphic Design  
SnapShot Interactive — Videography

### ULI Nashville Members:

Dominique Anderson, *Dominique Anderson Consulting*  
Grayce Bernard, *Macaw Capital Advisors*  
Nancy DeKalb, *DeKalb Communications*  
Sheila Dial-Barton, *EOA Architects*  
Malori Futral, *Render Me Happy*  
Chuck Gannaway, *Hastings*  
Graham Gilreath, *1st Southern Mortgage*  
Chad Jones, *STG Design*  
James Kelly, *Choate Construction*  
Bart Mackey, *LightArt*

## **Friends of the Awards**

Barge Design Solutions, Inc.

CESO, Inc.

Colliers International

Crain Construction

First Horizon Bank

Hoar Construction

Patterson Real Estate Advisory Group, LLC

Pinnacle Financial Partners

S&H Group

The Architect Workshop

Thomas & Hutton

Bass, Berry & Sims PLC

Bell & Associates Construction

Bradley Arant Boult Cummings LLP

CSDG

JLL

Kiser + Vogrin Design

Nelson Community Partners

SunTrust Commercial Real Estate

Bristol Development Group

FH Design

GHP Environmental + Architecture

Oman Gibson Associates

oneC1TY

Premier Parking

The Mathews Company

TTL

W&A Engineering

## **Information about ULI Nashville**

For more information about ULI Nashville, member benefits, programs, resources, and activities, please email [nashville@uli.org](mailto:nashville@uli.org) or call 615-497-2603. You may also find information at <https://nashville.uli.org> and [uli.org](https://uli.org).

For Social Media — Instagram @ULINashville and #ULINashvilleCommits  
Twitter @ULI\_Nashville

For information about becoming a member of ULI, please visit <https://www.uli.org>.

## **ULI Nashville Annual Sponsors**

ULI Nashville values its Annual Sponsors, without whose support ULI Nashville's year-long educational, professional development, member networking and community outreach programming would not be possible. For a complete list of ULI Nashville Annual Sponsors, please visit <https://nashville.uli.org/sponsorship/>.

## **About ULI**

The mission of ULI is to provide leadership in the responsible use of land and in creating and sustaining thriving communities worldwide. It does so by facilitating collaboration and the open exchange of ideas, information and experience among industry leaders, community partners and policy makers dedicated to creating better places

Established in 1936, the Institute today has over 40,000 members worldwide, representing the entire spectrum of the land use and development industries. It is through member involvement and information resources that ULI has been able to set standards of excellence in development practice. The Institute has long been recognized as one of the world's most respected and widely quoted sources of objective information on land planning, real estate development, place-making, and smart growth. The Urban Land Institute (ULI) is a 501(c)(3) nonprofit research and education organization supported by its members worldwide. ULI neither lobbies nor acts as an advocate for any single industry.



