

# ULI SF 2021 Annual Sponsorship



ULI San Francisco is the Bay Area's preeminent organization focused on creating and sustaining communities through wise land use, development, and redevelopment decisions. We bring together a thriving and dedicated multidisciplinary community of professionals to deliver market-based, innovative, and implementable solutions to the Bay Area and beyond. As integrators, we share real-world knowledge and best practices and through offering a wide range of in-depth educational programming, discussion papers, and resources for members and the broader Bay Area community.



## TECHNICAL ASSISTANCE PANELS

TAPs provide expert, multidisciplinary advice to local governments, public agencies and nonprofit organizations facing complex land use and real estate issues in the greater Bay Area.

## URBANPLAN

Our UrbanPlan high school program engages nearly 800 local students around the myriad of complex decisions that shape our built environment.

## EQUITY, DIVERSITY, AND INCLUSION INITIATIVES

Our newly established EDI Committee is committed to promoting diversity and racial equity and provides guidance on ULI SF's programming, governance, member initiatives, and outreach.

## YOUNG LEADERS GROUP

The Young Leaders Mentorship program connects nearly 170 young professionals to senior industry leaders to develop skills, build relationships, and foster thoughtful development practices.

## NEXT

The NEXT initiative elevates upcoming industry leaders by bringing hundreds of mid-career professionals together to share experiences and lessons learned.

## WOMEN'S LEADERSHIP INITIATIVE

Our Women's Leadership Initiative works to raise the numbers and visibility of women in the industry through internship opportunities, networking events, and leadership development.

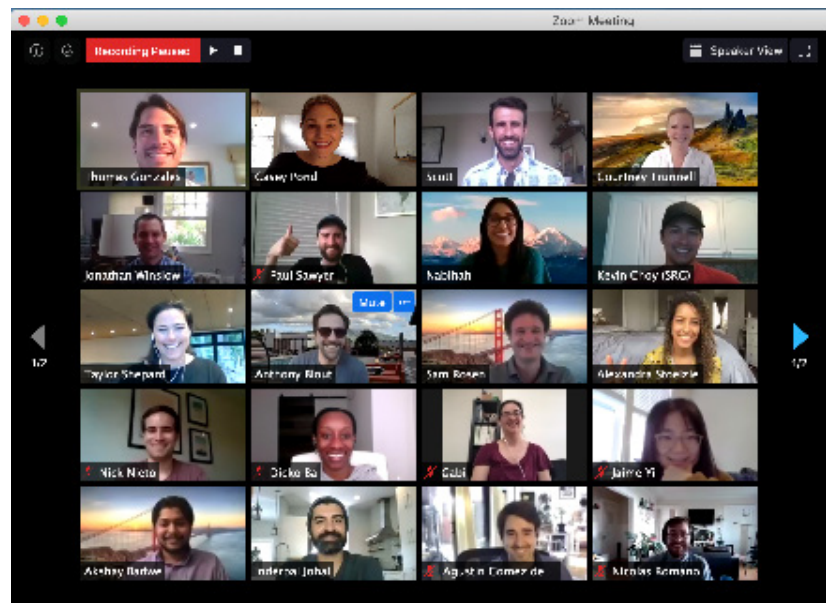
## EDUCATIONAL PROGRAMMING

We hold over 60 member-created events, webinars, courses, and workshops on the most important topics in the real estate industry.



Clockwise from top left: A behind the scenes tour of Saint Joseph's Arts Society; ULI Americas President Gwyneth Jones Cote speaks at ULI Night held at the top of Salesforce Tower; Volunteers at the Silicon Valley UrbanPlan Training.

100% of your contribution supports  
our programming at the local level.  
Last year, the support we received  
from our sponsors allowed us to  
continue and expand upon our work.



Virtual meeting of the Young Leaders Group (YLG) Steering Committee.

# ULI SF 2021

## Sponsorship Benefits

	PLATINUM \$17,500	GOLD \$12,250	SILVER \$6,500	BRONZE \$3,250
<b>Thought Leadership + Influence</b>				
Input into the programming of a series of invitation-only, high-level meetings and events with industry leaders	•			
Dedicated blog post or case study on ULI SF website and social media	•	•		
<b>Market Intelligence + Networking</b>				
Opportunity for two executives to attend invitation-only, high-level meetings and events with industry leaders	•			
Opportunity for one executive to attend invitation-only, high-level meetings and events with industry leaders		•		
Four tickets to our Annual Sponsor Appreciation Event	•			
Three tickets to our Annual Sponsor Appreciation Event		•		
Two tickets to our Annual Sponsor Appreciation Event			•	
One ticket to our Annual Sponsor Appreciation Event				•
<b>Branding + Profile</b>				
Company name, logo and link featured on ULI SF email blasts (4,300 people)	•			
Company name, logo and link featured on ULI SF introductory and closing slides at all ULI SF in-person and online events	•	•		
Company name and link featured on ULI SF website	•	•	•	•
Opportunity to distribute marketing collateral at selected ULI SF events	•			
<b>Market Engagement + Staff Benefits</b>				
One complimentary Associate membership	•			
Three complimentary Young Leaders memberships	•			
Two complimentary Young Leaders memberships		•		
One complimentary Young Leaders membership			•	
Six passes to all sponsor-eligible ULI SF in-person and online events	•			
Four passes to all sponsor-eligible ULI SF in-person and online events		•		
Two passes to all sponsor-eligible ULI SF in-person and online events			•	
One pass to all sponsor-eligible ULI SF in-person and online events				•

# 2020 SPONSORS

## PLATINUM

**ESSEX**  
PROPERTY TRUST, INC.

  
**GROSVENOR**

 **LEGACY**  
PARTNERS

**Perkins&Will**

**STOCKBRIDGE**  
CAPITAL GROUP, LLC

 **BISHOP**  
**RANCH**

## GOLD

- Allen Matkins
- Boston Properties
- Carmel Partners
- Carpenters 46 Northern California Counties Conference Board
- Seagate Properties
- The Swig Company
- TMG Partners

## SILVER

- Arup
- Bohannon Development Company
- Brookfield Properties
- Eastdil Secured
- Ellis Partners
- Ernst & Young
- ESA
- Fisher Center for Real Estate & Urban Economics
- FivePoint Holdings
- Google
- Hart Howerton
- Jay Paul Company
- Klingbeil Capital Management
- Lendlease
- Manatt Phelps & Phillips
- McNellis Partners
- Merlone Geier Partners
- Moss Adams
- Orchard Partners
- Pacific Urban Residential
- PCCP
- Perkins Coie
- Pillsbury Winthrop Shaw Pittman
- Rafanelli & Nahas
- Related California
- Rockwood Capital
- Sares-Regis Group of Northern California
- Shorenstein Properties
- STUDIOS Architecture
- Summerhill Apartment Communities
- SWA Group
- Swift Real Estate Partners
- The Prado Group
- Tishman Speyer
- Wells Fargo Commercial Real Estate

## BRONZE

- Bank of America
- Cahill Contractors
- Cox, Castle & Nicholson
- DIALOG
- Greystar
- Keyser Marston Associates
- LOWE
- MetLife Investment Management
- Miller Starr Regalia
- Nearon Enterprises
- Newmark Knight Frank
- Orrick
- Sack Properties
- SB Architects
- Seven Hills Properties
- Spear Street Capital
- Terra Search Partners
- The Dishnica Company
- Urban Planning Partners
- Westlake Realty Group

“ULI San Francisco provides great value as a forum for networking, learning from peers, and testing new ideas. For TMG Partners our ULI sponsorship is an important business investment.”

- Michael Covarrubias  
Chairman and CEO, TMG Partners

To pay by check,  
please remit to:

ULI San Francisco  
2 Bryant Street, Suite 300  
San Francisco, CA 94105

For credit card payment instructions,  
please contact: Adrian Garcia Hernandez  
at [adrian.garcia@uli.org](mailto:adrian.garcia@uli.org)

Contact: Michelle Malanca Frey, ULI SF Executive Director | [michelle.frey@uli.org](mailto:michelle.frey@uli.org) | (628) 245-2406

Please note that ULI SF sponsorship is non-refundable.