

# ULI BALTIMORE: RASH FIELD PARK THE FUTURE IS COMING



**MODERATOR:**  
Jonathan Williams  
Real Projectives



Laurie Schwartz, President  
Waterfront Partnership



Daniel Taylor, Managing Director  
Business & Neighborhood Development  
Baltimore Development Corporation



Scott Rykiel, Executive Vice President  
Mahan Rykiel Associates  
Landscape Architecture  
Urban Design & Planning



Denise Sullivan - Principal  
Urban Green Environmental, LLC  
Environmental Consulting and Engineering



Engraved and printed by T. B. S. & Co. Baltimore Md.

Engraved according to a view of Baltimore for the year 1859 by T. B. S. & Co. for the Office of the District Court of Maryland.

Art by C. M. S.

## VIEW OF BALTIMORE CITY

from Federal Hill.

### THE INDUSTRIAL PAST:

Artist Rendering of Baltimore City from Federal Hill that was printed and published in 1859. It offers a view of Baltimore two years before the Civil War.

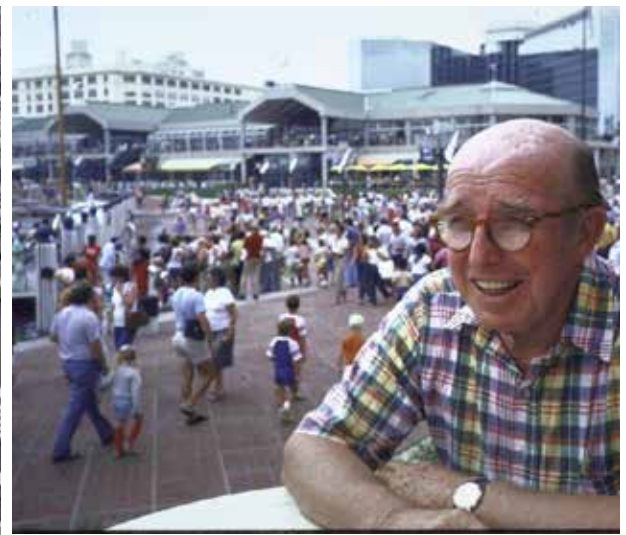
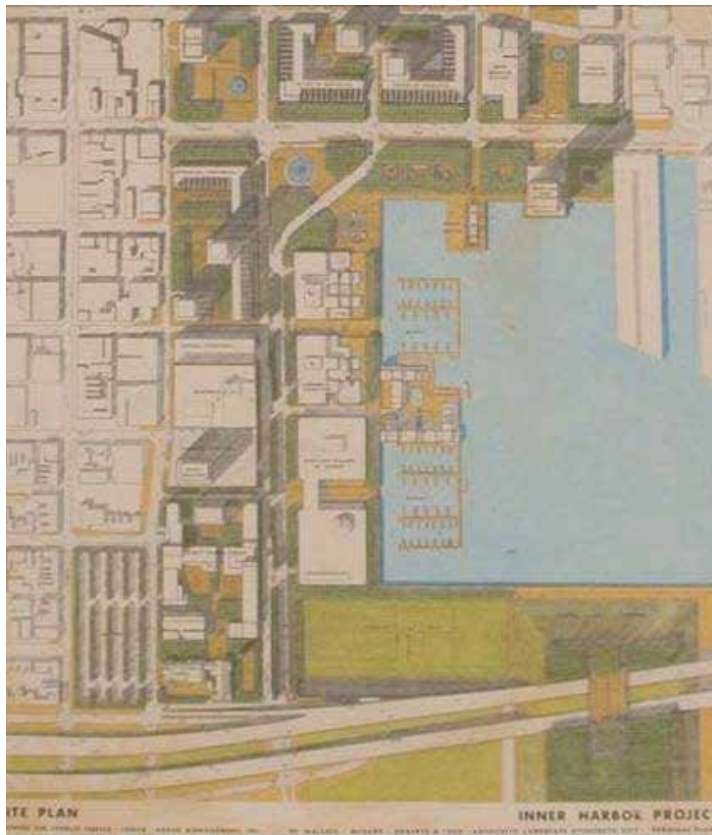




## BALTIMORE INNER HARBOR 1950'S - 1960'S

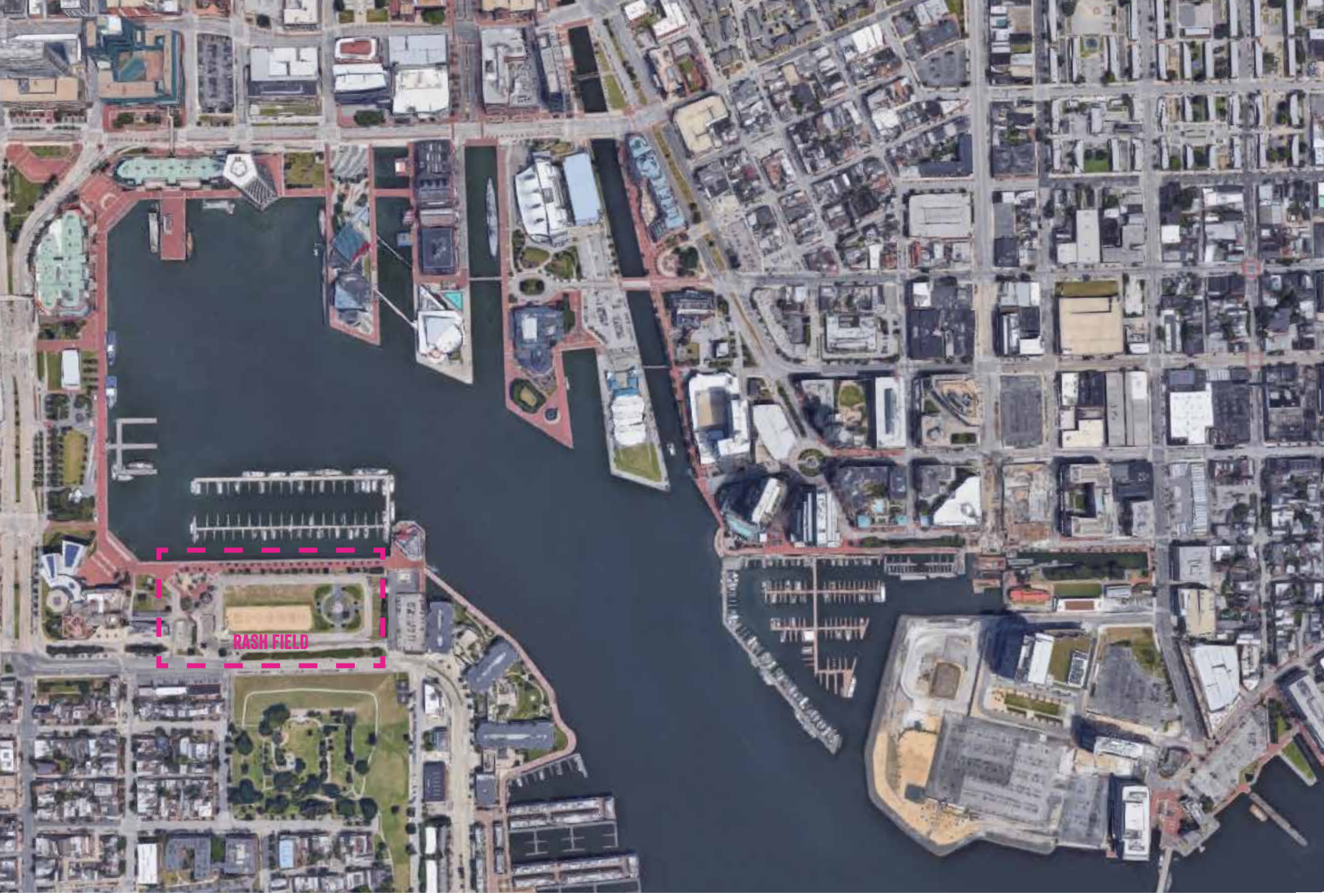
A view of Baltimore's Inner Harbor and Federal Hill in September 1964. At the time, plans were underway to change a working harbor into what is now a major tourist attraction. When the Inner Harbor was developed, it was hailed as a model for inner city transformation. (Ralph Robinson, Baltimore Sun files, 1964)





**FROM INDUSTRIAL TO PEDESTRIAN**





**BALTIMORE INNER HARBOR & RASH FIELD SITE**



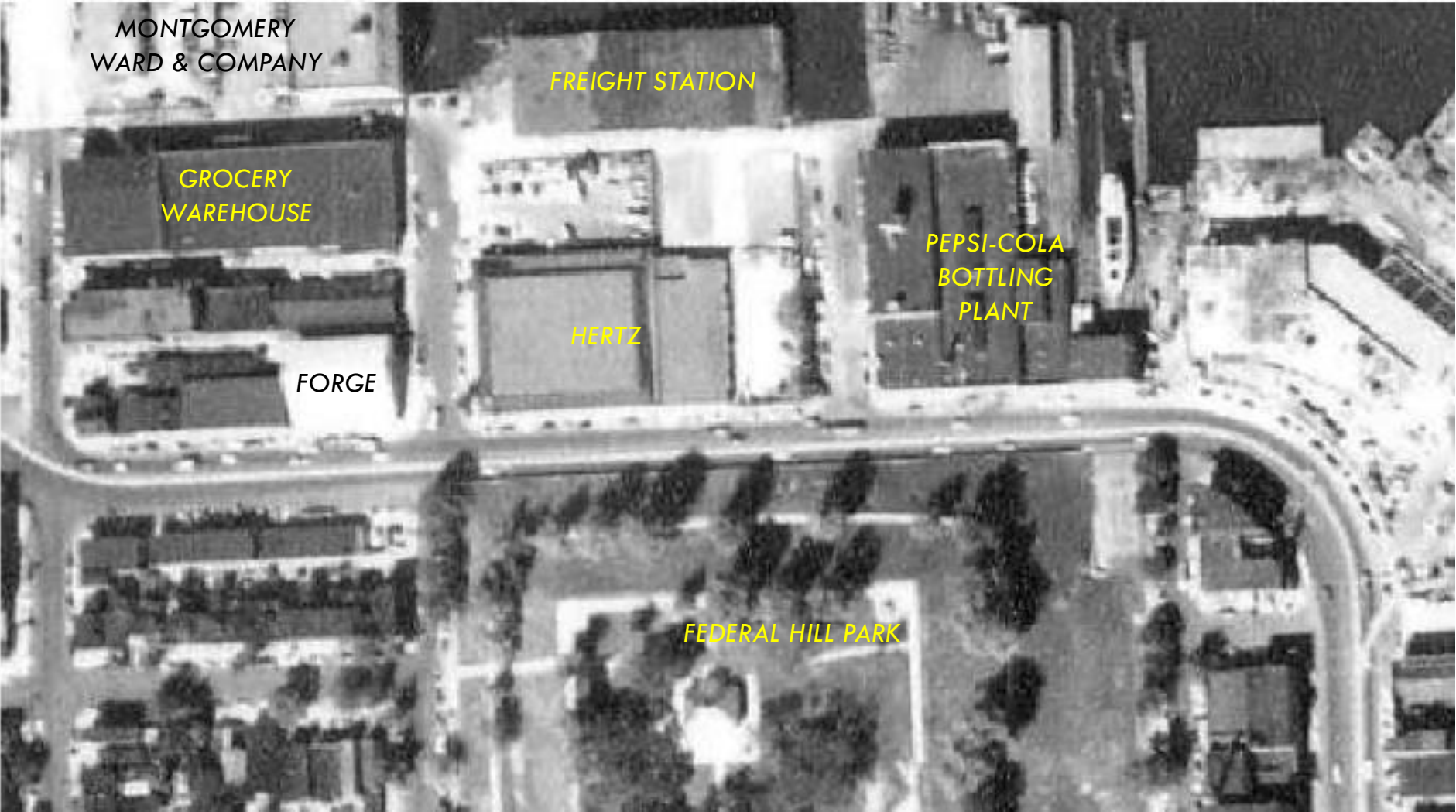


**HARBOR 2.0 PLAN - 2013**





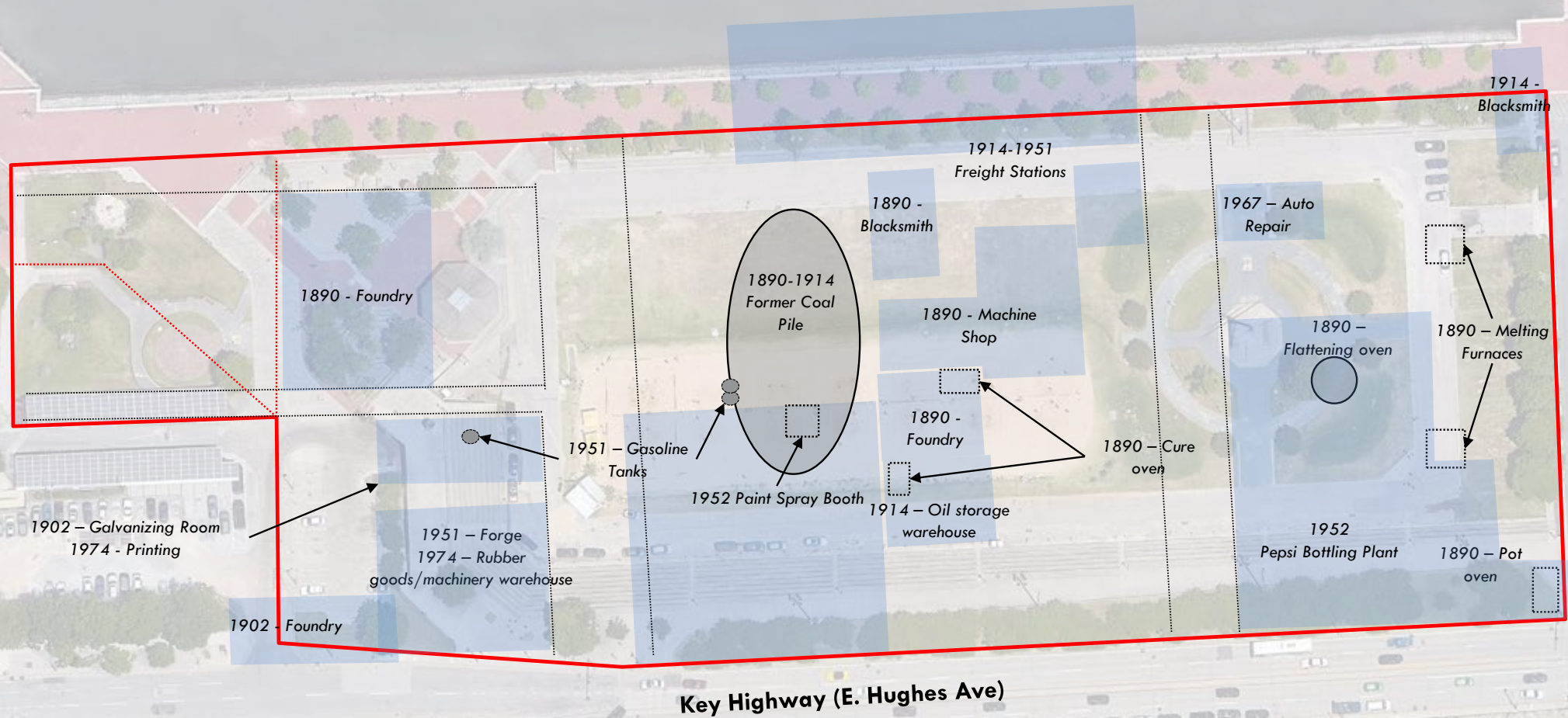
**RASH FIELD TODAY**



RASH FIELD HISTORIC USES 1950'S



Patapsco River Inner Harbor



**RASH FIELD HISTORIC USES 1950'S - 1960'S**





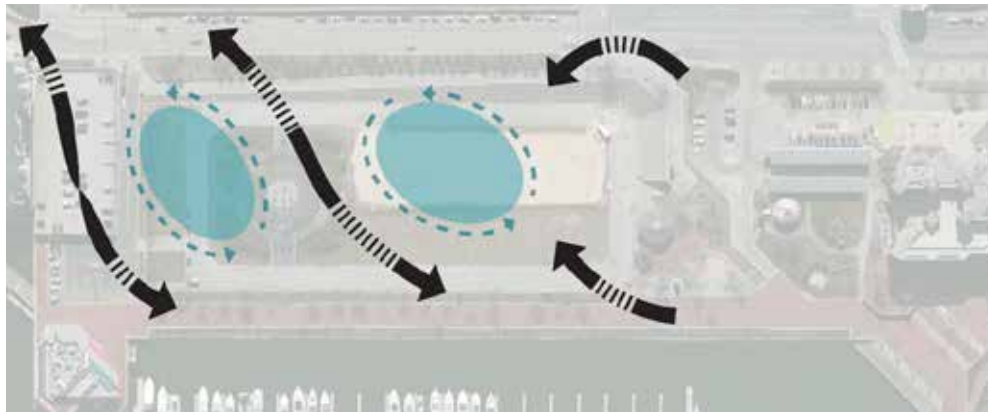
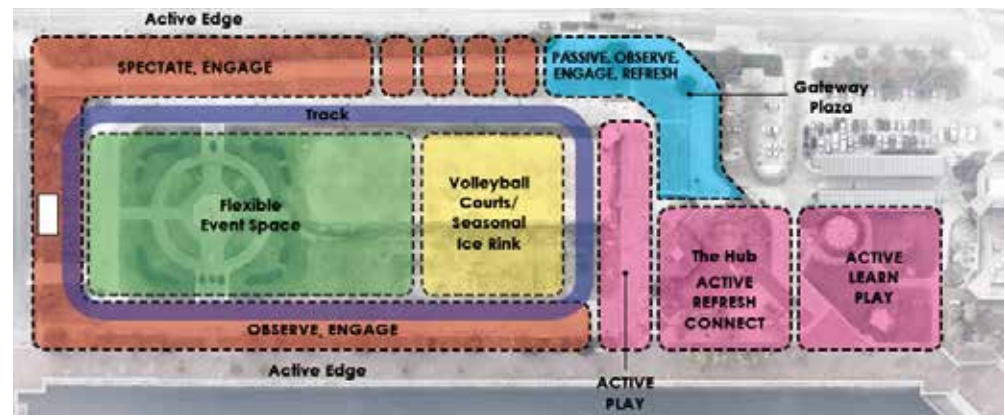
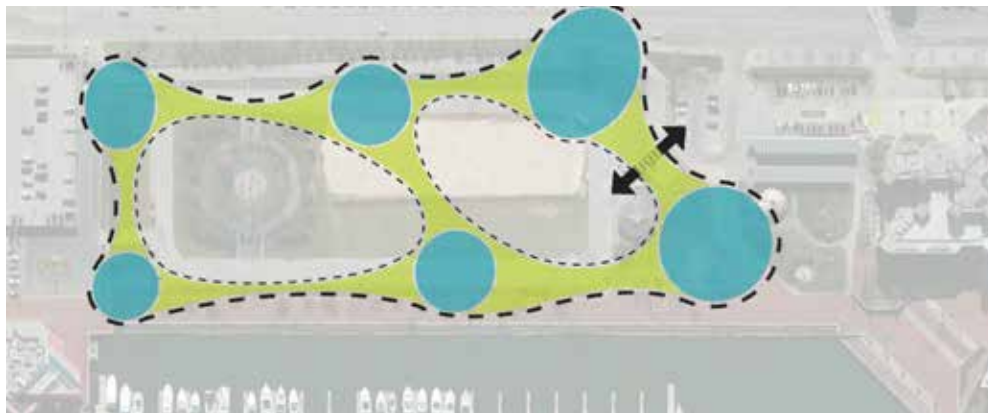




## PARK PROGRAMMING

- Recreation & Play
- Education & Ecology
- Programming & Entertainment
- Health & Wellness





## INVITING BALTIMORE INTO RASH FIELD

Through an iterative process, the design team worked to blend salient points of the community feedback into the plan. Parallel to the integration of public input, the team strove to open the edges, create welcoming arrival points, celebrate water views, and design places for gathering, learning, and playing.



# PHASE I

# PHASE II

ADVENTURE PLAY

NATURE PLAY

SHADE LAWN

OUTDOOR CLASS

THE PAVILION

SKATE PARK

BEACH

THE OVERLOOK

GAME LAWN

BUTTERFLY LAB

FITNESS AREA

OPEN LAWN

FITNESS AREA

BIRD LAB

MEMORIAL

## PROGRAMMING

- Recreation & Play
- Education & Ecology
- Programming & Entertainment
- Health & Wellness

## PHASE I Timeline

2021

| SUMMER   | FALL  | WINTER | SPRING   | SUMMER | FALL   |
|--|---|--------|--|--------|--|
| <ul style="list-style-type: none"> <li>Installation of temporary electric service</li> <li>Start demolition</li> </ul> | <ul style="list-style-type: none"> <li>Complete demolition</li> <li>Earthwork</li> <li>Grading</li> <li>Utility work</li> </ul> |        | <ul style="list-style-type: none"> <li>Construction of Pavilion, Nature and Adventure Parks</li> </ul> |        | <ul style="list-style-type: none"> <li>Ribbon Cutting</li> </ul> |



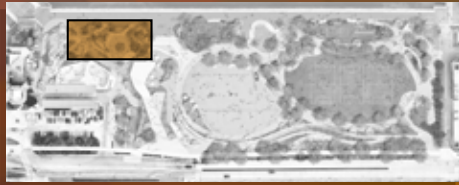
# RECREATION & PLAY

## KINETIC PLAY

- Imaginative and interactive play spaces that incorporate opportunities for children to learn about their surroundings and the environment

## NATURE PLAY

- Nature inspired play structures that engage children in a setting that is both physically and mentally stimulating



PRECEDENT IMAGERY



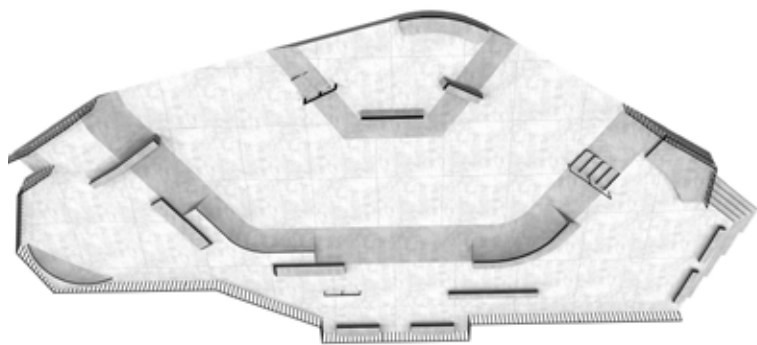
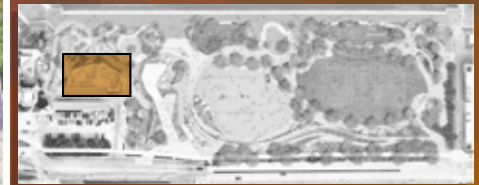




## RECREATION & PLAY

### THE SKATE PARK

- Through the public input process, a concept for a skate park, designed by nationally recognized skate park design team, emerged
- Provides much needed dedicated space for the skate boarding community of all ages and abilities in the Inner Harbor and Downtown



Design Team included nationally recognized skate park consultant.

STAKEHOLDERS

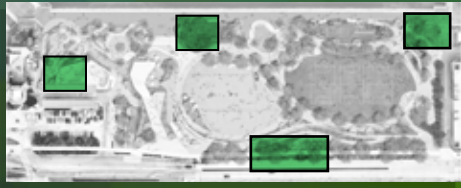




# EDUCATION & ECOLOGY

## LEARNING LABS

- Outdoor learning classrooms
- Bioretention ponds and educational signage to teach children about the environment and the importance of the Chesapeake Bay watershed
- Will be planted to attract native bird populations and butterflies



The Stormwater Lab



Native Chesapeake Bay Planted Bioretention Ponds



The Bird Lab



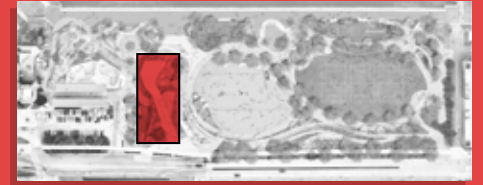
The Butterfly Lab



# PROGRAMMING & ENTERTAINMENT

## THE OVERLOOK

- A landing space for visitors entering the park and a connection from surrounding neighborhood
- A place of prospect and gathering with sweeping views of the Inner Harbor, skyline, and park programming

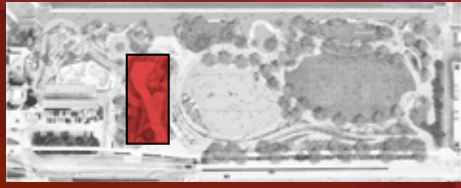




# PROGRAMMING & ENTERTAINMENT

## THE PAVILION

- The focal point of the park with bustling activity emanating out into the surrounding park areas
- Programmed with a local eatery, rental and kiosk, public restrooms, and shaded outdoor seating overlooking the park activity and Inner Harbor



PRECEDENT IMAGERY

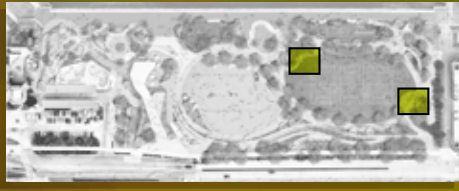




# HEALTH & WELLNESS

## FITNESS AREAS

- Exercise equipment hubs and workout zones will compliment running loop, open lawn, and beach for maximized workouts
- Each Fitness Area will feature unique exercise equipment, to accommodate a range of fitness levels & abilities



PRECEDENT IMAGERY



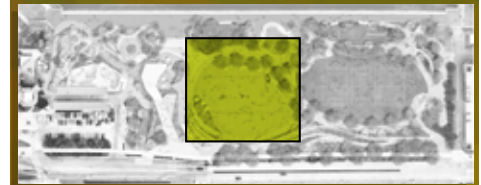




# HEALTH & WELLNESS

## THE BEACH

- Designed to accommodate seven beach volleyball courts and act as an urban beach
- Programmed to accommodate other beach activities including badminton, beach bocce, running drills, and non sport related programming

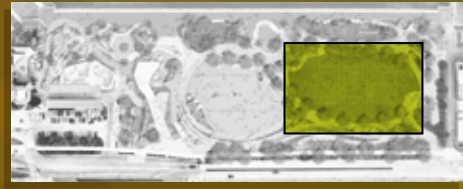




# HEALTH & WELLNESS

## OPEN LAWN

- An open space sized to host a multitude of health programming including flag football, youth league soccer or lacrosse games, free workout series, informal pick-up games, and adult league games
- Flexible space for hosting events of all sizes



PRECEDENT IMAGERY







## BALTIMORE'S CALLING

The new design of Rash Field answered a calling. Baltimoreans envisioned a place to empower themselves; where they come together to make one another stronger both mentally and physically; a retreat to celebrate, cherish and share the place they call home.