



# **SIGN UP FOR A STUDY TOUR**

**Bidadari Park**

**New Bahru**

**Punggol Digital District - Cycling Tour**

**SAFRA Choa Chu Kang**

**Keppel South Central**

**REGISTER NOW**

# BIDADARI PARK

## Community Resilience through Nature

**Date & Time:** 17 September 2025 | 03:30 PM  
**Meeting Point:** 100 Amoy St, Singapore 069920  
*\*One-way transport will be provided*

### SYNOPSIS

Bidadari Park exemplifies sensitive and sustainable urban design, transforming a former cemetery into a vibrant woodland sanctuary that honours its heritage and ecological value. Spanning 13 hectares (over 10% of the estate), the park is a resident-centric, accessible green space, that integrates place-making, active mobility, and nature-based solutions to support a young, growing community.

The park supports Singapore's Green Plan 2030, setting a benchmark for sustainable urban living by blending environmental stewardship, community well-being and climate resilience. It serves as a model for future developments where nature, heritage and people coexist harmoniously.

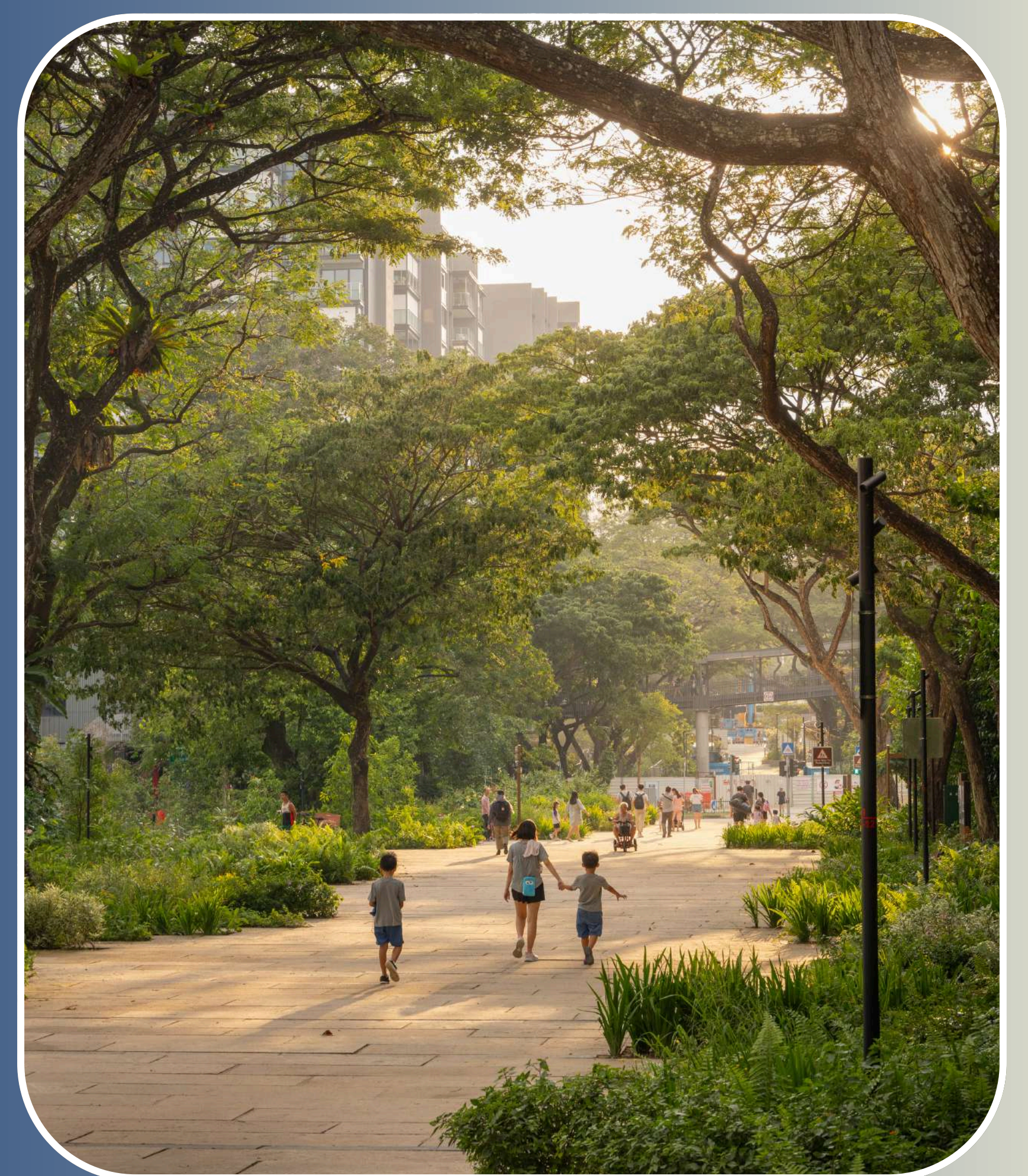
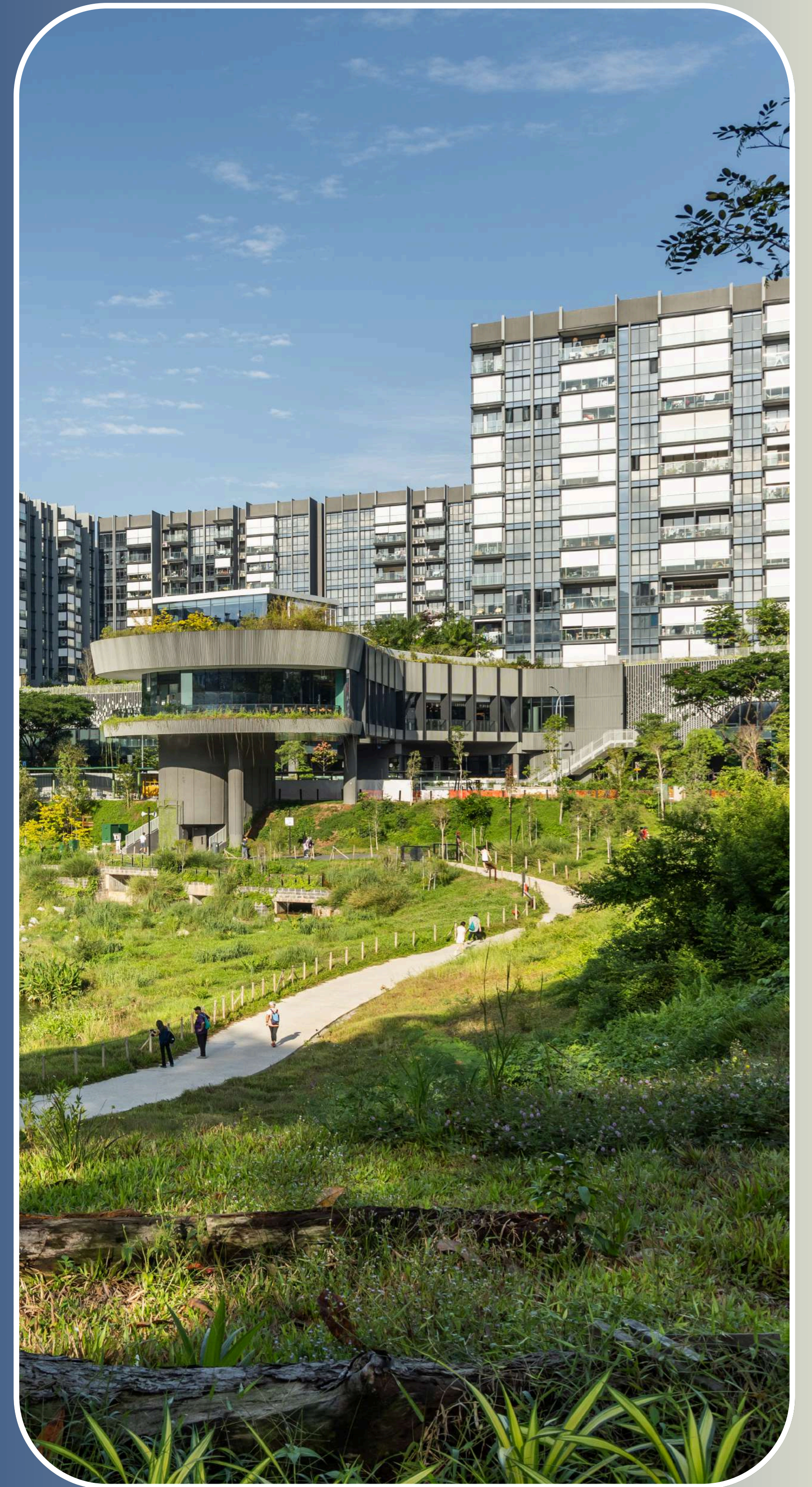
### TOUR DETAILS

**Hosts:** **Jia Xin Chum**  
Studio Director, Henning Larsen  
**Chi Bui**  
Vice President, Climate Resilience  
Studio, CPG Consultants

**Capacity:** 30

#### PROGRAMME:

**03:30 PM** Registration and Networking  
**04:15 PM** Transportation  
**04:35 PM** Arrival and Tour Commences  
**06:00 PM** End of Tour



**REGISTER  
NOW**

# NEW BAHRU

**Singapore's first creative cluster built upon the old bones of the former Nan Chiau High School**

**Date & Time:** 17 September 2025 | 04:00 PM  
**Meeting Point:** New Bahru, 46 Kim Yam Road, #03-03 Big Block, Alma House Lobby Lounge, Singapore 239351

## SYNOPSIS

An inside look at New Bahru, Singapore's first creative cluster and a case study in adaptive reuse and placemaking. Once home to Nan Chiau High School, this historic site has been thoughtfully reimagined as a vibrant destination, where architecture, culture, and community intersect.

Led by representatives from The Lo & Behold Group and FARM architects, the tour explores the vision and thought process behind New Bahru's development — from adaptive reuse and curation to fostering community engagement. Participants will gain insights into how heritage spaces can be transformed into dynamic lifestyle destinations that blend rich history with a dynamic modern identity.

## TOUR DETAILS

**Host:** **Derong Lin**  
Senior Architectural Designer, FARM  
**Venice Lee**  
Assistant Marketing Director, New Bahru

**Capacity:** 30

### PROGRAMME:

04:00PM Registration  
04.15PM Short Presentation  
04:45PM Tour Commences  
05.45PM Question & Answer  
06:00PM Networking - End of Tour



**REGISTER NOW**

# PUNGGOL DIGITAL DISTRICT - CYCLING TOUR

## Discover PDD: The Smart District Ride

**Date & Time:** 17 September 2025 | 03:15 PM  
**Meeting Point:** Raffles Place MRT - Outside the Singapore Land Tower building  
*\*One-way transport will be provided*  
*\*Tour bikes will be provided*

### SYNOPSIS

Master planned and developed by JTC, Punggol Digital District (PDD) is Singapore's first smart and sustainable business district that brings together digital industry leaders, academia, and community in a vibrant 50-hectare development. As a living laboratory powered by its Open Digital Platform, PDD enables businesses to testbed future-ready solutions while fostering collaboration with Singapore Institute of Technology's (SIT) faculty and students. Beyond its role as a business hub, the district enriches community life with the upcoming Punggol Coast Mall, waterfront dining at Market Village, and green spaces including a heritage trail. With its Green Mark Platinum certification and smart infrastructure, PDD sets new benchmarks in sustainable urban development while creating 28,000 jobs closer to home for residents in Singapore's northeast.

The 5-kilometre cycling tour will take participants around PDD and its neighbourhood, showcasing the district's connectivity and proximity to residents, amenities and facilities. The cycling-friendly infrastructure demonstrates PDD's commitment to sustainable transportation and active mobility, making it an ideal venue for work, life, play and learning

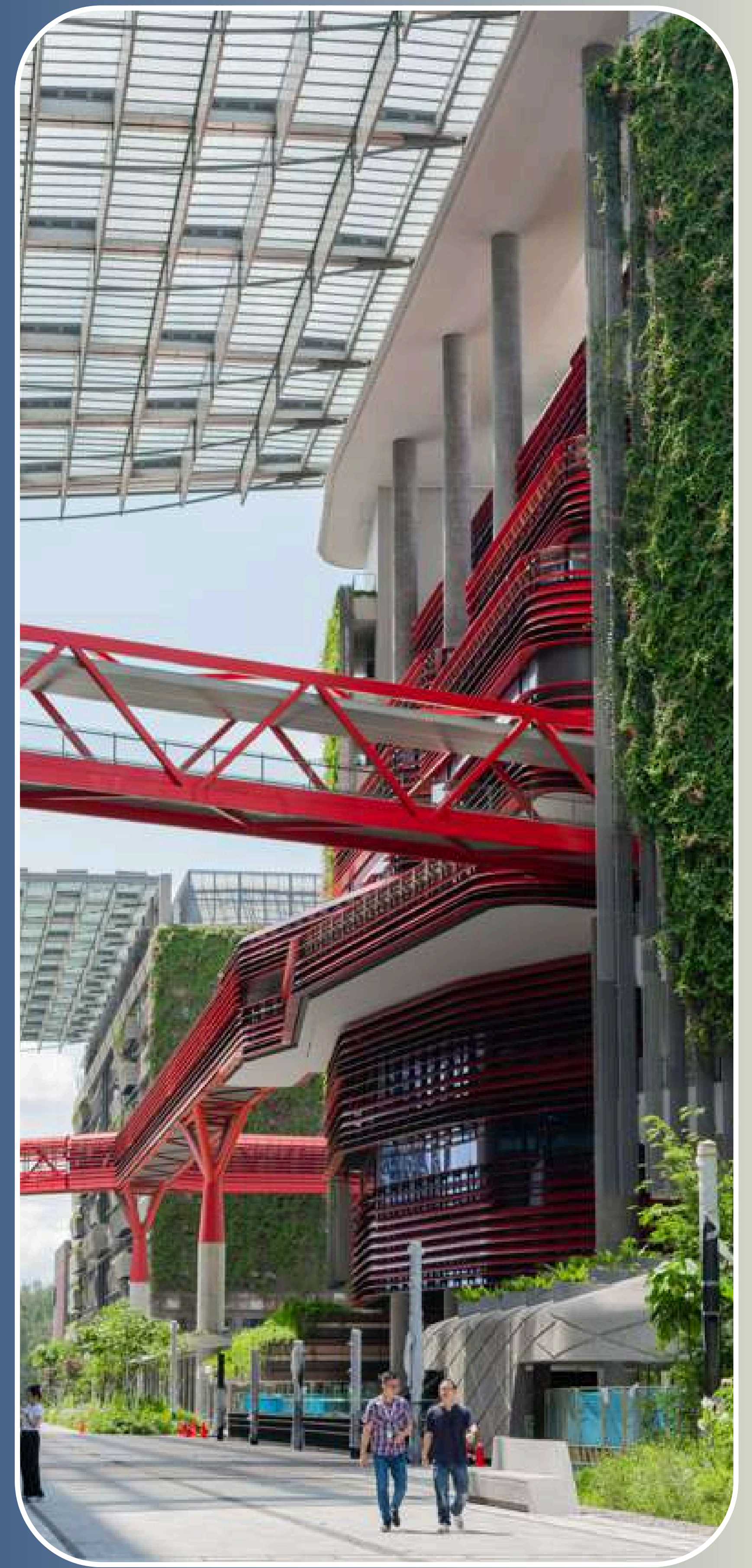
### TOUR DETAILS

**Host:** **Nelson Liew**  
Group Director, New Estates

**Capacity:** 20

#### PROGRAMME:

**03:15PM** Registration  
**03:30PM** Transportation  
**04:15PM** Arrival at the Tour Site  
**04:30PM** Bike Ride Commences  
**05:00PM** Presentation and Q&A  
**05:30PM** Networking  
**06:00PM** End of Tour



**REGISTER NOW**

# SAFRA CHOACHU KANG

## Social Infrastructure & Community Connections

**Date & Time:** 17 September 2025 | 03:30 PM  
**Meeting Point:** Marina Square Taxi Stand  
(near 7-11, along Raffles Boulevard)  
6 Raffles Blvd, Singapore 039594  
*\*One-way transport will be provided*

### SYNOPSIS

Sitting on a 1.4 hectare plot within Choa Chu Kang Park, SAFRA Choa Chu Kang Clubhouse (SAFRA CCK) emphasises sustainability and social impact through a design that responds to the tropical climate with features such as cross-ventilated corridors and an all-weather sheltered pool.

This tour aims to showcase how the publicly accessible clubhouse blends uniquely with the park setting, fostering community through interweaving fitness and a deep respect for nature and its surroundings.

Crafting sustainable, multi-functional spaces that recall and inspire fitness, SAFRA CCK nurtures the physical and mental well-being of its users, reinvigorating a community spirit while nurturing a communal bond with nature.

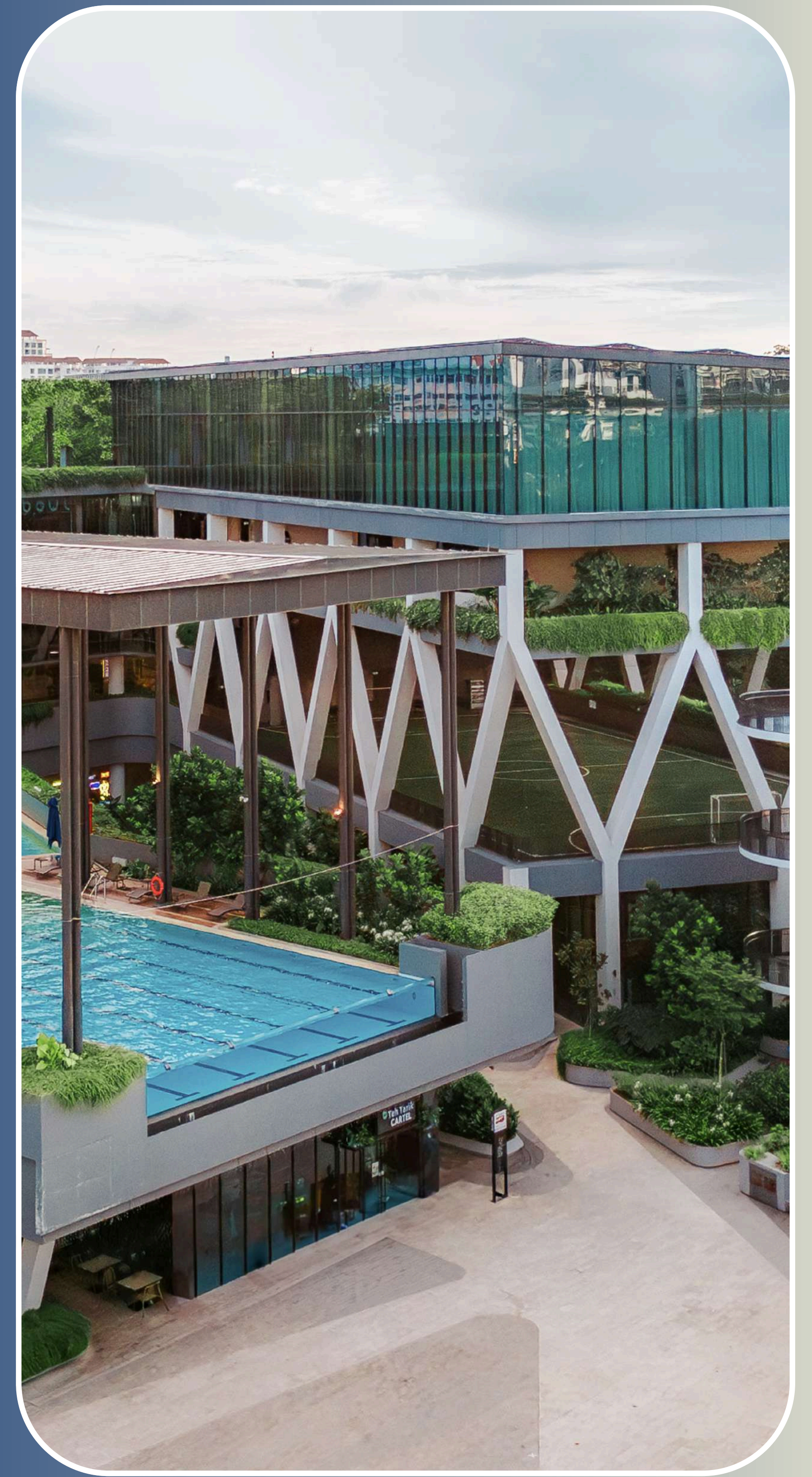
### TOUR DETAILS

**Host:** **Ar. Jireh Lee**  
Associate, DP Architects

**Capacity:** 30

#### PROGRAMME:

**03:30PM** Registration  
**03:45PM** Transportation  
**04:30PM** Arrival and Tour Commences  
**05:00PM** Presentation, Networking & Refreshments  
**06:00PM** End of Tour



**REGISTER  
NOW**

# KEPPEL SOUTH CENTRAL

## Office Building for the New Age

**Date & Time:** 17 September 2025 | 04:00 PM  
**Meeting Point:** 10 Hoe Chiang Rd, Singapore 089315  
Level 2 Mezzanine

### SYNOPSIS

Strategically located in Tanjong Pagar, Keppel South Central is a next-generation, smart, super-low-energy commercial tower designed for the future of work.

The 33-storey development offers approximately 650,000 square feet of premium Grade A office, retail, and event spaces, supported by curated lifestyle amenities and 24/7 facilities that empower tenants to work anytime, anywhere, in the way they want.

A flagship development by Keppel, this smart and sustainable tower is built for performance, sustainability, and well-being.

### TOUR DETAILS

**Host:** **Tan Szue Hann**  
Director, ESG & Sustainability Strategy, Fund Management & Head, Sustainability, Real Estate, Keppel Ltd.

**Capacity:** 30

#### PROGRAMME:

**04:00PM** Registration  
**04.30PM** Tour Commences  
**05.30PM** Networking  
**06:00PM** End of Tour

**Attention**



**This tour has reached maximum capacity.**

