



washington

ULI WASHINGTON

REGIONAL LAND USE LEADERSHIP INSTITUTE

CLASS OF 2020-2021

10TH COHORT OF INSTITUTE LEADERS!

The mission of ULI Washington's Regional Land Use Leadership Institute is to provide a powerful local resource to raise awareness and strengthen the collaboration among the real estate industry and business leaders from all sectors to tackle the National Capital Area's complex land use issues.

2020-2021 CAPSTONE

This year's capstone focused on improving transit access in low- and moderate-income communities. Despite the region's extensive public transit system, safe and convenient access to public transit amenities remains a challenge for some communities.

COG and Transportation Planning Board's 2020 Transit within Reach study identified 49 Transit Access Priority Areas. Of these communities, ULIW's FY21 Capstone project focused on improving two of the identified Access Priority Areas:

- Congress Heights Metro Station**
- Seven Corners Transit Center**

Analysis & Recommendations address: Design, Operations, Funding/Implementation, and Policy.



CONNECT. INSPIRE. LEAD.



BEN APFELBAUM

Project Executive
Davis Construction

"The ULI Washington Leadership Institute program has been a virtual success. Covid may have kept us away from live interactions, but networking online has been an engaging opportunity nonetheless to meet a great group of people from a variety of backgrounds across the industry. My top two takeaways from the experience are the shared perspectives on leadership across an array of topics and the relationships formed with emerging leaders. Thank you, ULI!"



JOSEPH "JJ" ARCE

Park Planner
PG Parks

"The program encouraged me to reflect on the type of person, leader, and team member I am today and how to aim to be in the future. Great leaders recognize the strength in being vulnerable."



ULYSSES AUGER

Acquisitions Manager
Jair Lynch

"The ULI Leadership program was an amazing opportunity to learn and gain perspective from my peers, the organizers, and speakers. I value the experience and the tight-knit network that comes with it."



TIM BERTSCHINGER

Senior Associate
Perkins Eastman

"I was really inspired by the level of engagement within the group and with the Leadership Institute in tackling tough questions and issues that we face in the world today. The positive energy around tackling equity and sustainability issues gave me great confidence that through our shared focus in shaping our built environment we can make meaningful contributions towards addressing some of the biggest challenges today. I am excited to have people who I can reach out to and who I can support in making the world a better place for everyone!"



BLAKE BOWEN

Associate Planner
Arlington County, Department of
Community Planning, Housing, and
Development, Zoning Division

"I feel remarkably fortunate to have been given exposure to so many experienced and knowledgeable professionals, both in terms of our scheduled speakers and my classmates. Each session provided valuable insight into a subset of the planning and development world, or more broadly, into ourselves."



PAUL BRAZIER

Senior Associate + Studio Leader
LandDesign

"Joining the ULI Washington Leadership was important to me as a continued effort to grow in my leadership within my current organization. It was an added benefit to meet and build relationships with other professionals within the industry too."



TIFFANY BROWN

Regional Account Manager
U.S. General Services Administration

"I was interested in meeting the wide range of professionals from the development community in the Washington DC Area. I am working with leasing in the National Capital Region and wanted to have more exposure and an opportunity to learn about current and future development perspectives."



LAUREN CALLAGHAN

Director, Advisory Services
Urban Land Institute

"Gaining insight into my personal leadership style and making connections with professional peers throughout the region are two valuable aspects I have gained from the Leadership Institute. I'm looking forward to applying what I've learned and built on the connections I've made."



MEGHAN DOWKER

Urban Planner
NCPC

"My biggest takeaways from the ULI Washington Leadership Institute were the opportunities for focused leadership development and connecting with peers and leaders within the urban planning and real estate professions."



MATTHEW FOLDEN

Planner Coordinator
Montgomery Planning

"The ULI Leadership Institute provided me an invaluable opportunity to network with land use professionals across the National Capital Region and learn more about the complex issues facing our communities. I look forward to future collaboration with these professionals as we tackle land use issues in the future."

“ *Keep learning, keeping asking tough questions, keep taking risks. Leaders never stop pushing the boundaries. Our industry is poised to solve the biggest challenges, a generation and leaders like you will be at the forefront. Persevere!* ”

RACHEL SOWARDS

Chief Operating Officer - Rodgers

Institute Alum



THOMAS GNECCO

Project Executive
Davis Construction



LEE GOLDSTEIN

Development Director
Volunteers of America

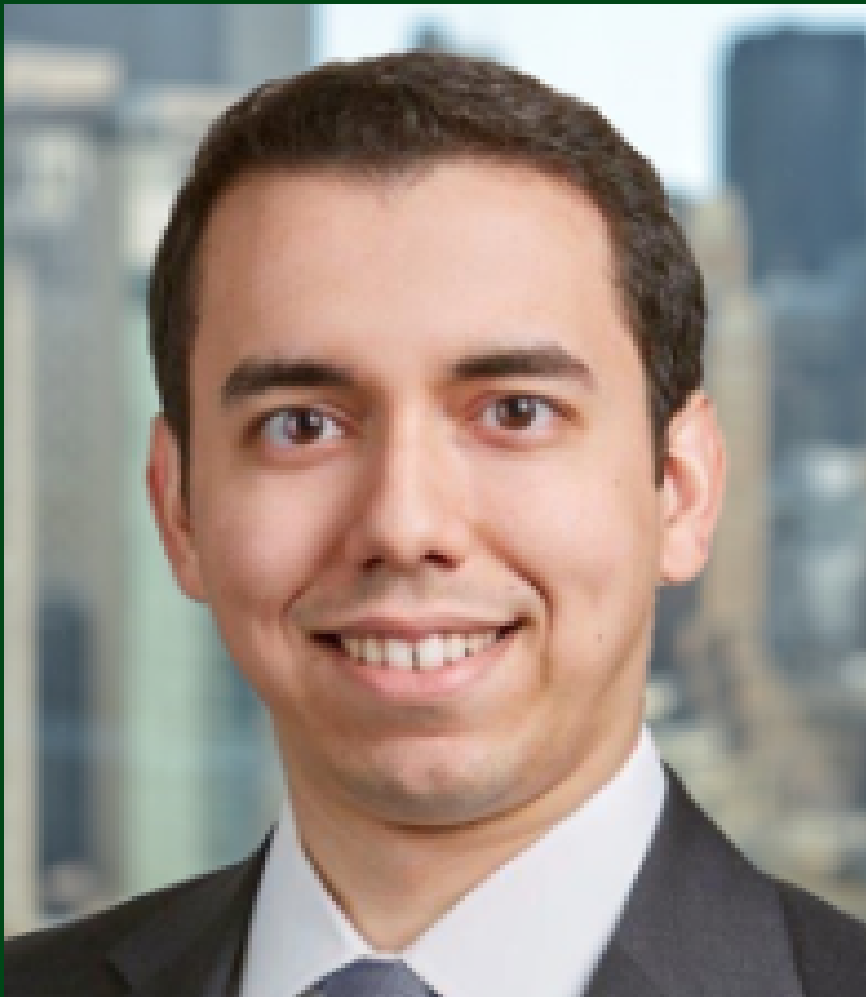
“Through the Leadership Institute, I gained valuable technical expertise & perspectives from subject matter experts, exposure to proven leadership principles, and a greater interpersonal awareness of myself and others. Meeting with the interdisciplinary cohort for 9 months has truly been a tremendous value for my own personal & professional development as I take on more leadership roles at my organization, and work to empower teams of professionals with different skill sets to solve complex land use issues.”



ARCHANA GUPTA

Senior Vice President/Deputy Chief Underwriter
Walker Dunlop

"The ULI leadership program has given me an opportunity to bond with leaders from various disciplines and learn so much from them. I have learned a great deal about how our local communities and agencies work together towards making our region a better place to live."



ORLANDO GUTIERREZ

Development Associate
The Rockefeller Group

"The ULI Washington Leadership Institute is an invaluable experience that enables its members to think holistically about opportunities and considerations that exist in the region today. I am grateful for the opportunity to learn more from classmates, speakers, and other local stakeholders about various topics that impact the built environment."



DEVON HASTIE

Development Manager
Bozzuto Group

"My biggest takeaway is the new relationships I formed and the existing relationships I strengthened through a common experience of interest. I even seem to have found a new real estate running group, which has been particularly fun!"



KRISTEN HUSHOUR

Planner IV
Fairfax County

"I learned more about my personal leadership style with the DiSC profile, other styles, and how to interact with someone of a different style. I have referred back to that program day several times to understand how I might be more effective before going into a conversation or situation."



MOLLINE JACKSON

Special Assistant to the Planning Director
Montgomery Planning

"This membership / professional training helps to strengthen my professional network, especially outside of just public sector agencies and more specifically geared toward real estate development. I'm also glad to contribute to the conversations around racial equity and social justice. Hearing from my fellow colleagues has helped me to realize how all of these things are connected."



SAMYIKA JAIN

Marketing Manager
Mayhood

"My biggest takeaway from the program came from the session with Carol Murray in which we received our DiSC profiles. The report was surprisingly accurate for me and it was extremely beneficial to see my priorities, motivations, fears, and limitations spelled out. I have already implemented various learnings from that report in my role at work and they will continue to have an influence on my leadership style into the future."



JAMES KELLY

Vice President, Development
JBG Smith

“The ULI Leadership program challenged me to view real estate problems through multiple professional prisms. Moving forward in my career I will be better positioned to understand the competing, but not necessarily conflicting, needs of stakeholders.”



VIVIAN LEE

Architect, Office of Planning & Design Quality,
National Capital Region, Public Buildings Service
GSA

"Joining the ULI Leadership program allowed me to connect with other professionals during the pandemic and reminded me that I was not alone. The sessions were very educational and inspiring. Thank you ULI for providing a venue to connect and learn from others. The capstone project was fun! I learned we all have different leadership styles and bring unique experiences."



CHRISTOPHER MARSHALL

Managing Partner at Kindred Realty Partners, Inc.
KindredRP

"Joining the ULI Washington Leadership Institute was important to me because it deepened my connection to the local ecosystem of local real estate professionals. I'm an investor and business owner that didn't enjoy the pleasure of growing up in Metro Washington but did have the sense to choose to make this region my new home. Learning about the history as well as the future of urban development throughout the region has brought me an intimate knowledge base often reserved for natives."



KATHERINE NOONAN

Partner-Elect
Ballard Spahr

"By far the greatest takeaway of the ULI Washington Leadership Institute was the relationships I've made with other group participants. I look forward to working with my new friends on an ongoing basis."



ELIZABETH PACKER

Director
HR&A Advisors



ERIC PAPETTI

Transportation Program Specialist
DOT/FTA

“ *The land use decisions we make today, determine the destiny of our cities’ tomorrows. By participating and graduating from the Regional Land Use Leadership Institute, you will each be better positioned to make the right decisions in the future to enable our communities to prosper, and be equitable.* ”

ED WALTER

Global Chief Executive Officer
Urban Land Institute - Executive Office



WILLIAM 'K.C.' REED

Senior Director of Project Services
Rodgers

“The ULI Leadership Institute program is a tremendous opportunity to acquire broader insight into the various issues related to the land development industry beyond my own professional capacity; including both a practice and geographic perspective.”



KATE SALOMON

Senior Associate, West Coast Acquisitions
RSE Capital



ADAM WATSON

Principal Planner
Arlington County

“Joining the Leadership Institute was important for expanding my professional network and learning from my peers in different industries across the DMV area.”



ST. CLAIR WILLIAMS

Senior Planner, Urban Centers Section, Department
of Planning and Development
Fairfax County

"The leadership program helped broaden my knowledge and awareness of some of the tools and capabilities that contribute to being an effective and successful leader, such as understanding your leadership style and behavior preferences, as well as recognizing and understanding the behavior preferences and communication styles of those you manage and work with."

PROGRAM FACILITATORS

Mary Abbajay, Expert Facilitator, Careerstone Group LLC

Andy Altman, Principal & Co-Founder, Fivesquares Development

Theresa Backhus, Associate Director of Outreach and Engagement, IMT Building Hub

Katie Bergfeld, Chief, Building Performance & Enforcement Branch, Department of Energy and Environment

Maura Brophy, President & CEO, NoMABID

Charles T. Brown, MPA, CPD, LCI, Senior Research Specialist, Alan M. Voorhees Transportation Center (VTC)

Samia Byrd, Chief Race and Equity Officer, Arlington County

Timothy Canan, Director of Planning Data and Research Program, MWCOG

David Cernila, Senior Development Manager, Stonebridge

Jeannette Chapman, Director, Stephen S. Fuller Institute, George Mason University

Joe Carrol, Managing Principal, Cross River

Sohaël Chowfla, Director of Development, EDENS

Allison Davis, Director of Strategic Planning, Office of Planning, WMATA

Paul Desjardin, Director of Community Planning and Services, MWCOG

Tim Flynn, Senior Vice President, Design & Construction, Rockefeller Group

Len Forkas, CEO, Milestone Communications

Lily Goldstein, Vice President, Social Impact Investing, JBG Smith

Toni Griffin, Founder urbanAC, Professor of Urban Planning, Harvard School of Design

Dan Hardy, Principal, Renaissance Planning

John Holden, Director of Economic Development, Stafford County

David Ihrie, Chief Technology Officer, CIT

Lauren Jezienicki, Founder and CEO, One Circle Co.

Rob Klein, Retired City Planner, CIVITAS Consultants

Adam Kovacevich, Head of Government Relations and Public Affairs, North America & Asia Pacific, Lime

Richard Lake, Founding Principal, Roadside Development

Jessica Long, Director of Sustainability, US Real Estate, Nuveen

Robert Mandle, Deputy Executive Director, National Landing BID

Robert McCartney, Senior Regional Correspondent, The Washington Post

Molly McKay, Principal, Willdan

Bill McLeod, Executive Director, Dupont Circle Main Streets

Andrew Meese, Systems Planner, Department of Transportation, MWCOG

Carol Murray, Co-founder, The Lifework Institute

Hilary Orr, Deputy Director, Transportation Department of Transportation & Env. Services, City of Alexandria

Feras Qumseya, Vice President- Development, Foulger-Pratt

Stephanie Rath, Senior Vice President, Operations, Bozzuto Management

Robert Seldin, CEO, 2HSQ

Rachel Sowards, Chief Operating Officer Rodgers Consulting, Germantown, MD

Carolyn Sponza, Studio Director, Principal, Gensler

John Swanson, Program Manager, MWCOG

Liz Wainger, President, Wainger Group, LLC

Dawnita Wilson, Vice President, Diversity and Inclusion, JBG Smith

Mark Weisner, President, Bozzuto Construction Company



REGIONAL LAND USE LEADERSHIP INSTITUTE CHAIRS



HILARY GOLDFARB

Senior Vice President & Regional Development Officer
The Rockefeller Group
Leadership Institute Co-chair
Institute Alum



JILL HUNGER, AICP

Commercial Development Specialist
Arlington Economic Development
Leadership Institute Co-chair
Institute Alum



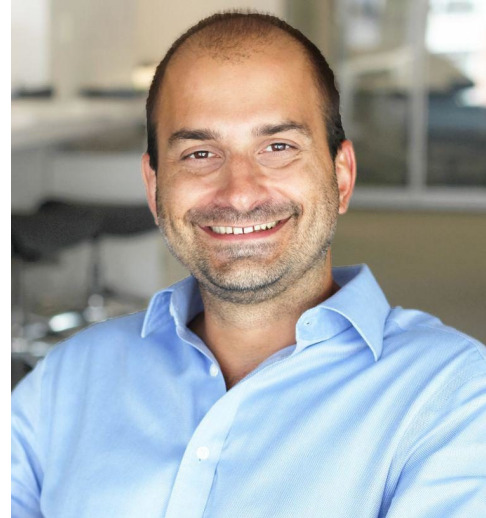
MARK PHILLIPS

Principal Planner/ Sr. Transportation Analyst
WMATA
Leadership Institute Co-chair
Institute Alum

REGIONAL LAND USE LEADERSHIP INSTITUTE COMMITTEE



Charles Lancaster
Accelspace



Rod Letonja
Perkins + Will



Doug Loescher
Fairfax County



Molly McKay
Willdan Group, Inc.



Renan Snowden
District Department of Transportation



Rachel H. Sowards
Rodgers Consulting, Inc.



David Zaidain
Gensler

ULI WASHINGTON DISTRICT COUNCIL CHAIR



JAMIE WEINBAUM

Executive Vice President
MidCity Financial
ULI Washington Chair
Leadership Institute Alum



Congratulations to the 2021 graduating class of the Leadership Institute! I wish you continued success as you navigate your careers in the commercial real estate industry, and I hope that you will continue to engage with ULI Washington as we work toward a more sustainable and equitable Washington region.



ULI WASHINGTON TEAM



LIZ PRICE

Executive Director
ULI Washington



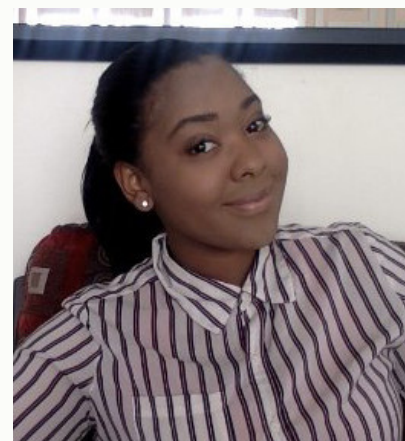
MARGIT NAHRA

Senior Director
ULI Washington



AMANDA SCARANGELLA

Manager
ULI Washington



BRIA BURKE

Associate
ULI Washington



ELISABETH ROHDE

Associate
ULI Washington



BECCA HERTZ

Former Manager
ULI Washington



VICTORIA COMER

Preferred Provider
Urban Land Institute

**THE MISSION OF THE URBAN
LAND INSTITUTE IS TO SHAPE
THE FUTURE OF THE BUILT
ENVIRONMENT FOR
TRANSFORMATIVE IMPACT IN
COMMUNITIES WORLDWIDE**