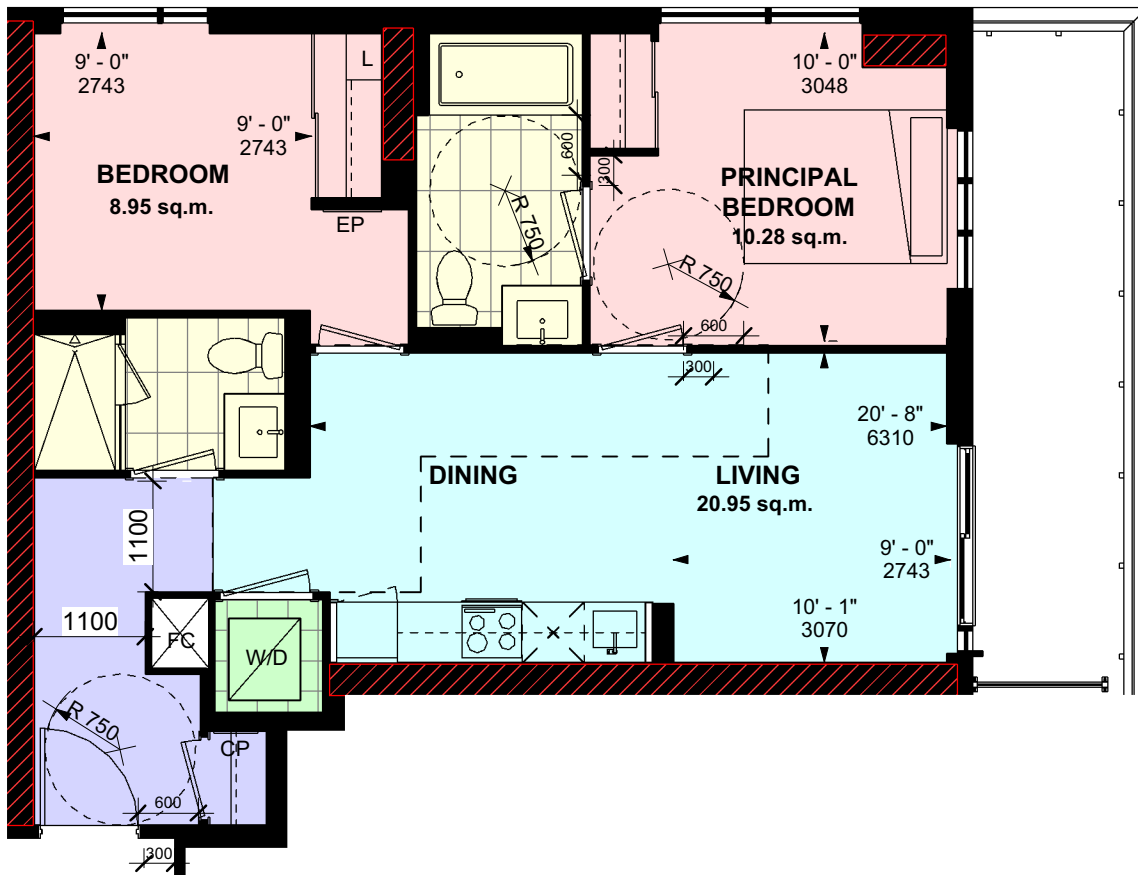


NON-BARRIER FREE UNIT
AS PER OBC (ONTARIO BUILDING CODE)

2 BEDROOM

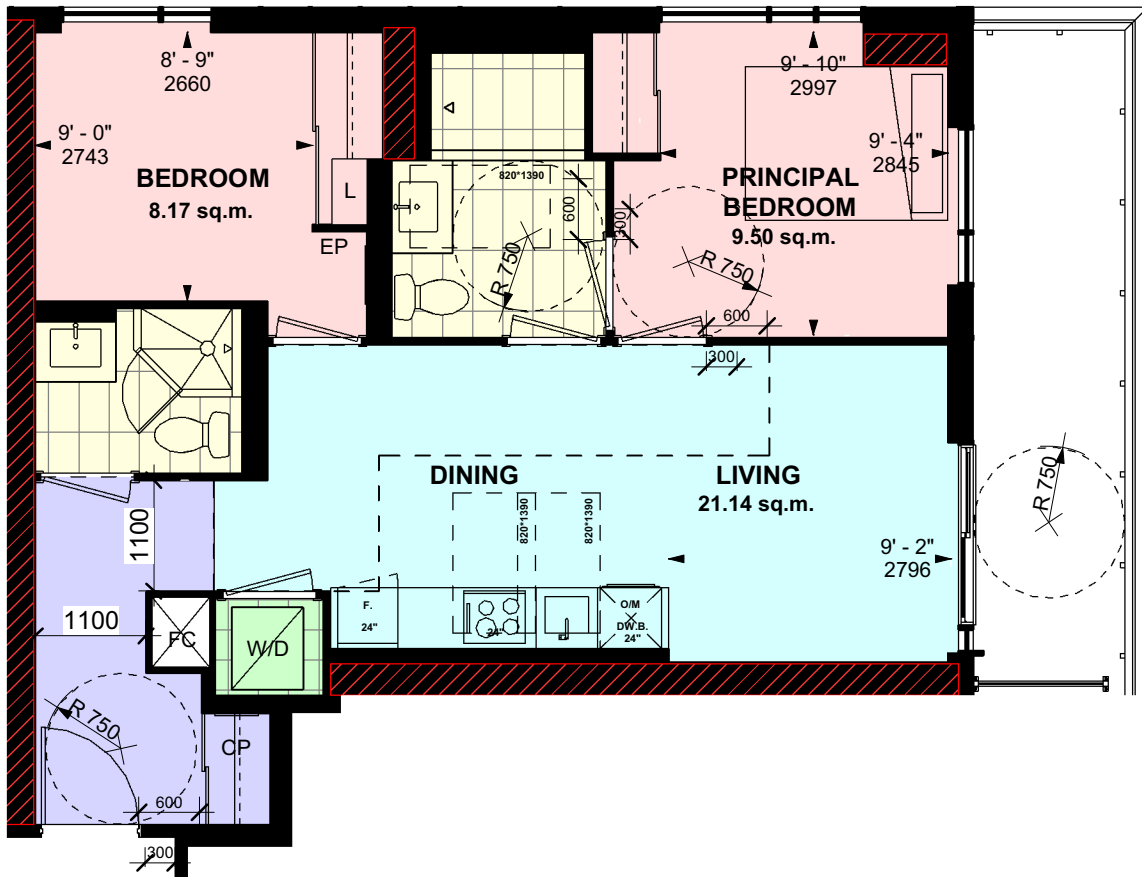
726 ft²



BARRIER FREE UNIT
AS PER OBC (ONTARIO BUILDING CODE)

2 BEDROOM

726 ft²



ADAPTABLE UNIT
AS PER RHF (CSA B652-23)

2 BEDROOM

726 ft²



VISITABLE UNIT
AS PER CMHC MLI SELECT

2 BEDROOM

726 ft²



FULLY ACCESSIBLE UNIT
AS PER RHF (CSA B652-23)

2 BEDROOM

726 ft²