

SEPT 6-7, 2019  
GRADUATE HOTEL



ULI OKLAHOMA:  
NWA PEER CITY TRIP

THANKS TO OUR GENEROUS  
SPONSOR FOR MAKING THIS  
EVENT POSSIBLE:  
Cherokee Springs  
PLAZA



## PARTICIPANT GUIDE

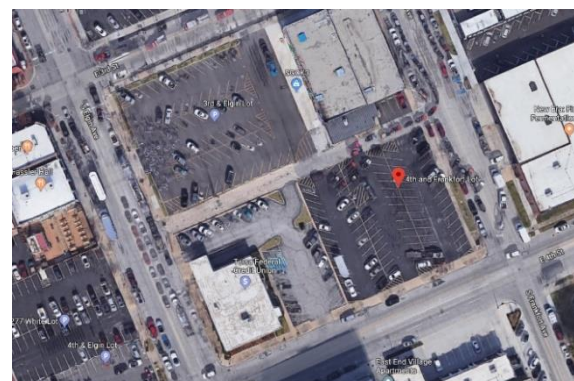
- Contribute to the conversation on Facebook/Twitter/Instagram: @ULIoklahoma #ULIOKtravels
- Add the organizers' phones to your address book for emergencies (see reference section)
- If you miss a stop, please make your own way to the next stop of your preference (Uber/Lift available)
- Suggested dress code: casual, good walking shoes
- Ask lots of questions & engage! We hope this is a valuable trip for each of you!

## Friday, September 6<sup>th</sup>

7:00 AM OKC - Please arrive at the Midtown parking lot no later than 6:45am to load bus  
410 NW 11<sup>th</sup> (SW corner of 11<sup>th</sup> & Hudson)  
*\*\*ULI OK is not responsible for vehicles or contents of car\*\**



8:30 AM TULSA - Please arrive at the downtown parking lot no later than 8:15am to load bus  
423 E 4<sup>th</sup> St (NW corner of 4<sup>th</sup> & Frankfort)  
*\*\*ULI OK is not responsible for vehicles or contents of car\*\**



## Friday, September 6<sup>th</sup>

9:00 AM	Depart for NWA	(Travel Time: 2.5 hrs + stops)
11:30 AM	Arrive in Fayetteville	Park, Unload Bus, & Bathroom Breaks before lunch
12:00 PM	<b>Welcome Lunch</b>	<b>NWA Introduction: Matthew Petty – Infill Group</b> <b>Cultural Arts Corridor Presentation: Allison Quinlan – Flintlock Lab</b>
1:30 PM	Bus to South Fayetteville	
1:45 PM	Walking Tour of South Fayetteville Neighborhood	<b>Allison Quinlan – Flintlock Lab</b> 945 S College Ave, Fayetteville, AR 72701
2:45 PM	Bus to Theater Squared	
3:00 PM	Tour of Theater Squared	<b>Michael Repovich - Field Office LLC</b> 477 W Spring St, Fayetteville, AR 72701
4:00 PM	Walk to Eco Modern Flats	<i>*bus available for those with mobility concerns</i>
4:15 PM	Tour of Eco Modern Flats	<b>Sarah King – Specialized Real Estate</b> 130 S Hill Ave, Fayetteville, AR 72701
5:00 PM	Bus to Uptown Fayetteville	
5:15 PM	Tour Uptown Fayetteville	<b>Sarah King – Specialized Real Estate</b> 3959 N Steele Blvd #102, Fayetteville, AR 72703
6:30 PM	Hotel Check In/Break	Graduate Hotel, 70 North East Ave, Fayetteville, AR
7:15 PM	Happy Hour with NWA Chapter Members	Maxine's Tap Room – 107 N. Block Ave, Fayetteville, AR
8:00 PM	<b>FREE EVENING</b>	<i>*Participants pay for their own meals &amp; provide own transport/walk</i>

## Saturday, September 7<sup>th</sup>

8:00 AM	Check Out & Load Bus	Take bags to bus <i>no later than 8:15am</i> <i>*Participants are responsible for their own breakfast</i>
8:30 AM	Bus Departs to UofA	
8:45 AM	Tour of UofA Housing Development	<b>Chris Baribeau – Modus Studio</b> 187 South Stadium Drive, Fayetteville, AR 72701
9:45 AM	Bus to the City of Rogers	
10:15 AM	Tour the 1907 Building	<b>Ward Davis – High Street Real Estate &amp; Development</b> 101 E Walnut St, Rogers, AR 72756

11:30 AM	Walk to Lunch	Moonbroch Brewing Company 117 W Walnut St, Rogers, AR 72756
1:00 PM	Bus to the City of Bentonville	
1:30 PM	Tour of 21C Museum/Hotel	<b>Brenda Anderson – Blue Crane</b> 200 NE A St, Bentonville, AR 72712
2:45 PM	Tour of Pressroom	<b>Brenda Anderson – Blue Crane</b> 100 NW 2nd St #100, Bentonville, AR 72712
3:45 PM	Bus to the 8 <sup>th</sup> Street Market	
4:00 PM	Tour of 8 <sup>th</sup> Street Market	<b>Brenda Anderson – Blue Crane</b> 801 SE 8th St, Bentonville, AR 72712
5:00 PM	Dinner	8 <sup>th</sup> Street Market Food Truck Court <i>*\$20 budgeted per person – please be mindful of limit</i>
6:30 PM	Depart for Tulsa/OKC	(Travel Time: 2.5 hrs/4 hrs + stops)

## SPEAKERS & HOSTS



### **Matthew Petty – Principal, Infill Group**

Matthew's passion is helping city leaders manage for higher revenues and happier communities. He practices mixed-use development in Northwest Arkansas and teaches nationwide for the Incremental Development Alliance. He has been elected three times to the City Council in Fayetteville, Arkansas and has helped cities reform zoning and development. Matthew believes the highest form of public engagement is building a development ecosystem that everyday locals can participate in. His newest initiative is implementing pattern zones in cities desperate for a process to develop small parcels and vacant lots.



### **Allison Thurmond Quinlan – Principal, Flintlock Lab - <http://www.flintlocklab.com/>**

Alli Thurmond Quinlan is an architect, landscape architect, and small infill developer. She founded and runs Flintlock Ltd Co (a multi-disciplinary design practice), Flintlock Development (an urban infill real estate development company), and jointly runs Valkyrie Design Cooperative (a shared services co-op that supports and promotes women in the design profession). She also served on the Fayetteville Planning Commission and the Construction Board of Appeals, as well as serving as a faculty member for the Incremental Development Alliance and a visiting professor at the Fay Jones School of Design at the University of Arkansas. Alli believes that small developers have the potential to be advocates for their neighborhoods, leading the redevelopment of communities to both protect and include longtime residents while welcoming new, diverse neighbors within a variety of "gentle density" forms. Allison's practice focuses on creating beauty in lovable, walkable places.



**Michael Repovich – Owner Representative, Field Office LLC**

Michael Repovich has made a career in design, construction and oversight across the country. After receiving a degree in architecture from Kansas State University and Washington University in St. Louis, he spent 17 years working for HOK in Washington, DC, New York, Chicago and St. Louis. Repovich launched his own firm in St. Louis in 2005 focusing on smaller projects and Institutional Master Planning. After moving to Fayetteville, AR in 2014, he joined the Office of Sustainability at the University of Arkansas focusing on the University's Zero Waste Initiative. When Arkansas Children's Hospital began considering a campus in Springdale, they called upon Repovich to serve as Owner's Representative. He has continued this role for Theatre Squared in Fayetteville.



**Sarah King – Communication Manager, Specialized Real Estate Group - [specializedreg.com](http://specializedreg.com)**

Sarah has served as Communications Manager for Specialized Real Estate Group for 6 years. She leads external communications and marketing as well as the company's community service efforts. She formerly served as Director of Community Outreach for the Botanical Garden of the Ozarks, where she oversaw volunteers, membership, grant writing, public programs, marketing, and communications. She has a MA in Landscape Architecture from University of Wisconsin - Madison and has grown the largest zucchini in Washington County three years running.



**Chris Baribeau, AIA – Principal + Co-Founder, Modus Studio**

<http://www.modusstudio.com/projects/stadium-drive-residence-halls>

Chris Baribeau [AIA] is the Principal Architect and co-founder of modus studio, a progressive design collective. Together with companion fabrication lab, modus shop, the firm bridges the profession with architectural, graphic, prototyping, and fabrication work. As the leader of the firm, Chris draws daily inspiration and experience from his place, the threshold between the natural and man-made world of the Ozarks. He is an advocate of conscious observation as inspiration for design and views the world around him as an unwritten instruction manual for living. He follows an idea; the idea that architecture can be sourced from the simple, everyday experiences of life. He believes the architecture that results from these experiences can be inspiring to all people in a personal, practical, and sustainable way. People deserve good space and good buildings, derived from good ideas.



**Ward Davis – Principal, High Street Real Estate & Development - <https://www.highstreetred.com/>**

Ward is a founding partner of High Street Real Estate & Development, a real estate company focused on urban and New Urban properties. Current projects include two traditional neighborhood developments, Johnson Square and Drake Farms; downtown adaptive reuse of a warehouse grocery, The 1907 Building; and an infill attainable housing project, Willow Bend, in conjunction with not-for-profit Partners for Better Housing. Ward currently serves as President of the National Town Builders Association, a national trade organization for leading developers of economically, socially, and environmentally sustainable neighborhoods and town centers. He also serves as a developer member of the resource council for the Form-Based Codes Institute and as a member of the Strategic Planning Steering Committee for the Urban Land Institute, Northwest Arkansas Chapter.



NO PHOTO  
AVAILABLE

**Brenda Anderson – Director of Real Estate Development, Blue Crane**

<https://www.21cmuseumhotels.com/bentonville/>

<http://www.eatatpressroom.com/>

<http://8stmarket.com/>

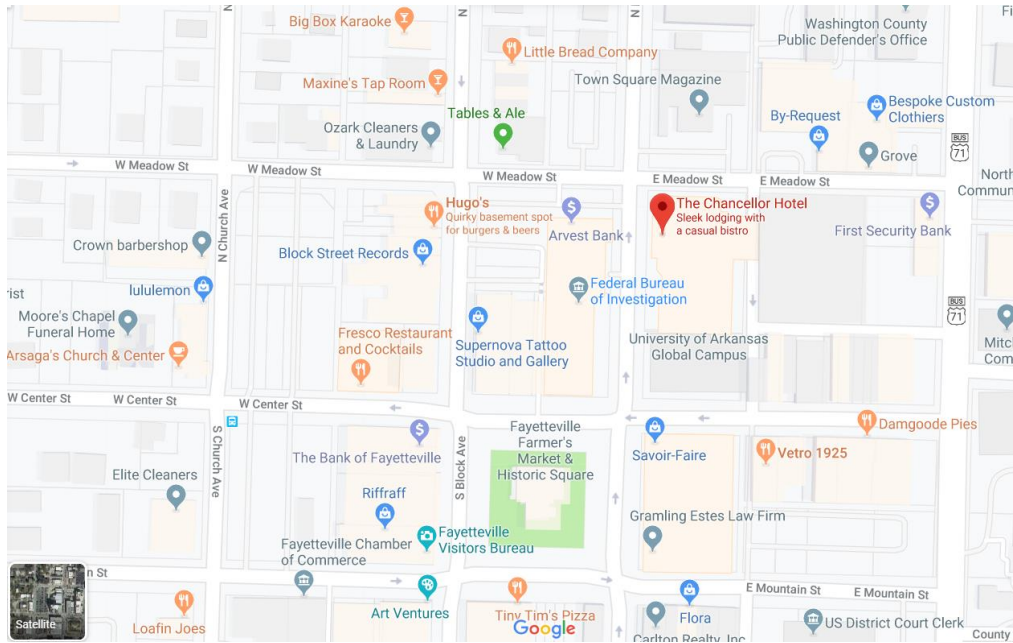
<https://www.alocalhangout.com/>

Brenda is the Director of Real Estate Development for Blue Crane. Blue Crane provides real estate services to a number of local entities focused on the development of properties in Northwest Arkansas. Blue Crane projects are designed to provide unique hospitality, food and beverage, entertainment, commercial and residential experiences in downtown neighborhoods. Prior to her tenure with Blue Crane, Brenda spent 15 years as the Executive Director of Community Development Corporation, Bentonville/Bella Vista, Inc. The CDC is a local non-profit focused on providing affordable housing and housing with services for the elderly. During Brenda's tenure, the CDC developed the first licensed assisted living facility in Arkansas as well as the first housing cooperative in the state. Brenda's work experience also includes over a decade working in municipal and county planning.

## SOCIAL MEDIA

<u>NAME</u>	<u>TWITTER</u>	<u>INSTAGRAM</u>
ULI Oklahoma – Tag us!	<a href="#">@ULIoklahoma</a> #ULIOKtravels	@ULIoklahoma #ULIOKtravels
Walton Arts Center	@walton_arts	@waltonartscenter
Cultural Arts Corridor	@FYVgov	@fyvgov #culturalartscorridor
South Street Cottages	@southstcottages @AtqLab	@southstcottages @flinklock.lab
Theatre Squared	@TheatreSquared	@theatresquared
Eco Modern Flats	@ecomodernflats	@ecomodernflats @specializedreg
Uptown Fayetteville	@UptownFay	@UptownFay @specializedreg
UofA Housing	@modusstudio @UARKHousing	@modusstudio @uarkhousing
21C Museum & Hotel	@21cBentonville	@21chotels
Pressroom	@eatatpressroom	@eatatpressroom

# FOOD & COFFEE NEAR HOTEL



## ADD'L FAYETTEVILLE HIGHLIGHTS

### Local Food Venue Favorites Include:

- Hugo's (Awesome burgers!)
- Bordino's
- Theo's
- Vetro 1925
- Cheers at the OPO
- Taste of Thai
- JJ's (sports bar)
- Tiny Tim's Pizza (very casual Fayetteville staple)
- Wasabi

### Dickson Street (East to West)

- Unique retail shops and restaurants
- Be sure to visit George's Majestic Lounge, the oldest live music venue in Arkansas
- 11 minute walk from the Chancellor (.6 miles)

### Block Avenue (North to South)

- Mecca of independent stores with friendly service and unique stock
- One block west of the Chancellor

### VeoRide

- Download the VeoRide app to explore Fayetteville by bike share

# PEER CITY PARTICIPANTS

For more info, check out the ULI Member Directory – <https://members.uli.org>

LAST	FIRST	ORGANIZATION	TITLE	REGION
Aggarwal	Aman	GFO Companies		OKC
Belzley	Jonathan	New Leaf Development	Principal	TULSA
Belzley	Susanna	The Pencil Box	Director of Operations	TULSA
Bolzle	Bruce	TYTO Realty Advisors	Owner	TULSA
Bolzle	Nancy	TYTO Realty Advisors	Owner	TULSA
Bradshaw	Jennifer	JCJ Architecture	Architect	TULSA
Brannon	Justin	Embark Solutions, LLC		OKC
Cao	Nathan	Omega Investments LLC	Founder/Owner	OKC
Dugan	Drew	Burns & McDonnell	Design-Build Project Manager	OKC
Dugan	Hilary	Hilary Dugan Designs		OKC
Foraker	Jeremy	Foraker Company	President	OKC
Gomez	Raymond	Phillips+Gomez, Inc	President	TULSA
Gomez	Tricia	Tricia Gomez Consulting (TGC)	Owner	TULSA
Gower	Alex	Riscuit LLC		OKC
Griffin	Jennifer	J Griffin Design, LLC	Owner	TULSA
Griffin	John	Selser Schaefer Architects	Associate Principal	TULSA
Harris	Clayton	Adwon Properties		TULSA
Hunt	Brian	Cherokee Nation Property Management, LLC	Senior Real Estate Development Manager	TULSA
Hwang	Andrew	ADEPT Commercial Real Estate	Partner	OKC
Johnson	Timothy	Johnson & Associates, Inc.	Staff Engineer	OKC
Johnson Sr.	Timothy	Johnson & Associates, Inc.	President	OKC
Le Cao	Scarlet	Omega Investments LLC	Principal	OKC
McBeath	Michelle	ULI Oklahoma	Manager	OKC
O'Meilia	Jake	Laureate Psychiatric Clinic & Hospital		TULSA
O'Meilia	Katy	Planning Design Group	Sr. Planner	TULSA
Pardee	Scott	Evolving Communities	Community Founder	TULSA
Peacock	Matt	WPM Design Group	Vice President	OKC
Smithee	Chris	Cherokee Nation Property Management, LLC		TULSA
Upchurch	Drew	Modus Construction	President	OKC
Weinmeister	Marcus	Commercial OKC	Owner	OKC
Williams	Roland	Lektron Branding Solutions	Business Development Executive	TULSA
Zitzow	Mark W.	Johnson & Associates, Inc.	Urban Planner	OKC

## IMPORTANT PHONE NUMBERS

Katy O'Meilia - Event Co-Chair 405.830.1346

Michelle McBeath - ULI Manager 417.773.1838

Bruce Bolzle - Tulsa CMA 918.640.7824

Jonathan Belzley - Tulsa Programs 918.899.0198

Graduate Hotel 855.285.6162

THANKS AGAIN TO OUR  
GENEROUS SPONSORS FOR  
MAKING THIS EVENT  
POSSIBLE:

