

# Finalist

## Alabama Development of Excellence



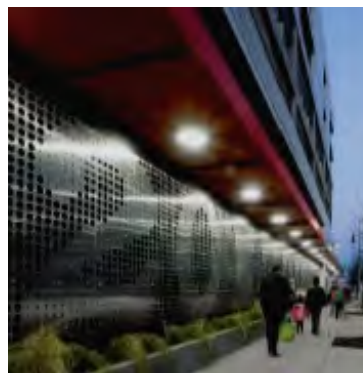
### 20 Midtown

20 Midtown is a multi-phase mixed-use development in Birmingham built on a vacant corner that connects the University of Alabama Birmingham (UAB) Campus on the Southside to the City Center on the Northside. The project has sought to bridge the gap between the bustling Downtown and Southside neighborhoods while providing housing in an area with limited living space.

Formerly located in a previously vacant area and food desert, 20 Midtown brought an anchor grocery store, Publix to the city scape and has transformed access to healthy food. The overall project consists of retail, office, and residences and is centrally located in downtown Birmingham to other amenities like Railroad Park, Rotary Trail and public transportation.

The development features free electronic car charging stations, and strives to enhance the pedestrian level by encouraging parking cars and walking through the neighborhood. The streetscape improvements include contemporary benches, bike racks, tree wells, planters, and a Zypbike (a Birmingham bike share project) station.

20 Midtown has renewed interest in living in the midtown area and provided access to healthy food for current and future residents. The development has help to spark new commercial growth and success and is contributing to the renaissance of living in downtown Birmingham.



#### Project Team\*

- Firestone Flowers LLC
- CCR Architecture & Interiors
- Macknally Land Design
- Ard Contracting
- Stewart Perry
- Gonzalez Strength
- Bhate Geosciences
- Structural Design Group
- Whitaker & Rawson
- Fisher Arnold
- AVX
- Office Interiors

\*As provided on Awards application