

# Hamilton E. Holmes MARTA Station mTAP Recommendations



## Prepared by:

Ben Skidmore, Kimley-Horn  
Caleb Brenneman, LaSalle Investment Management  
Chris Leutzinger, Invest Atlanta  
Jack Hinrichs, Oxford Properties  
Robyn Stokes, Stratford Land



# TABLE OF CONTENTS

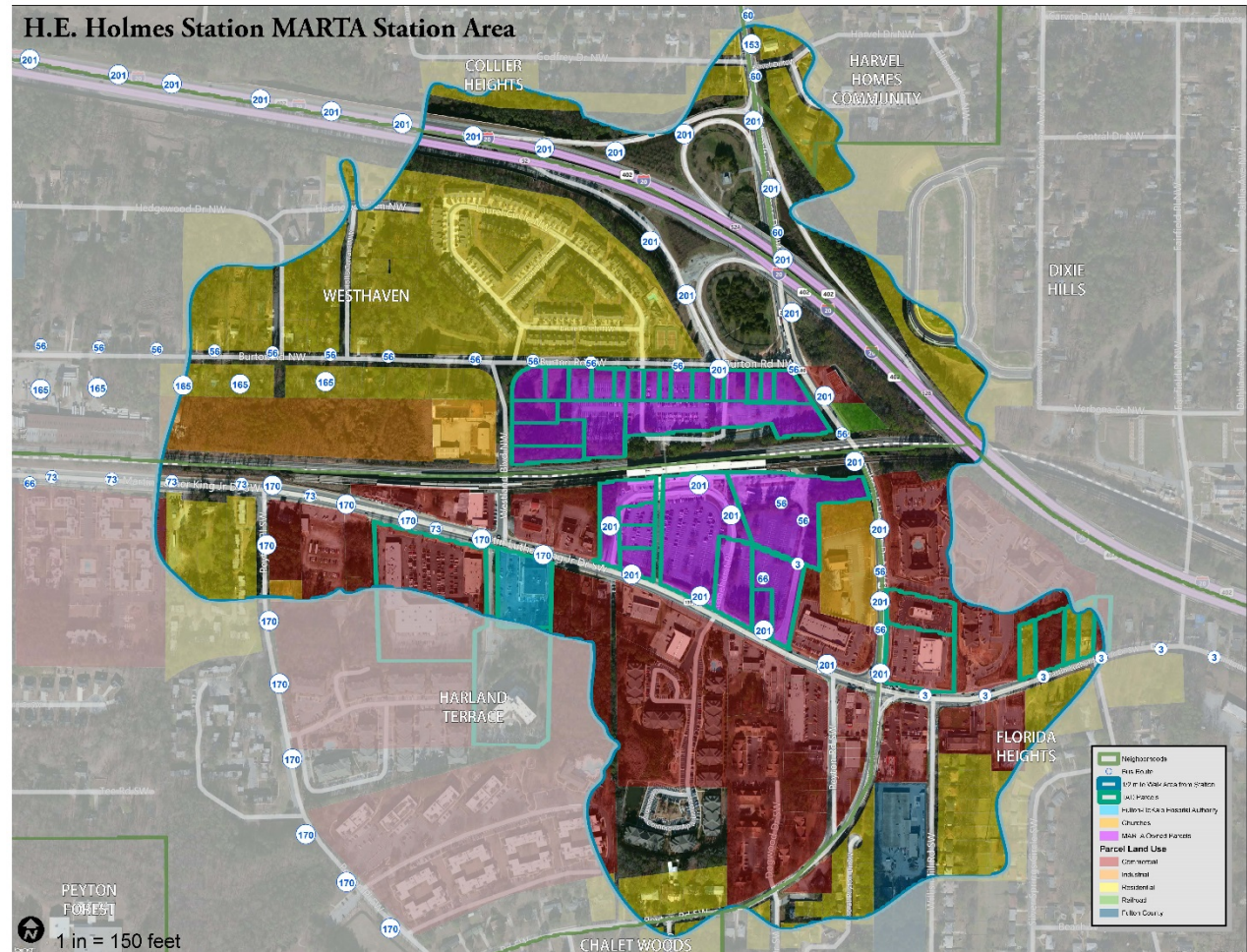
- Project Summary
- Research and Methodology
- Community Involvement
- Survey Findings
- Program Recommendations
- Site Plan
- Phasing
- Cost Analysis
- Funding
- Operations
- Next Steps
- Conclusion



# Hamilton E. Holmes MARTA Station | mTAP Recommendations

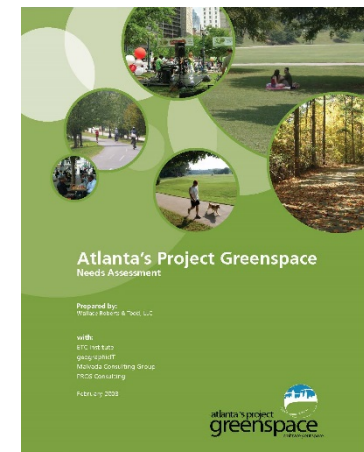
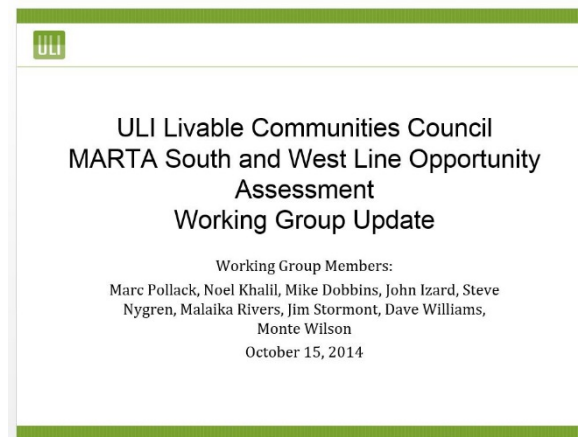
## PROJECT SUMMARY

- Identify interim uses
- Activate site
- Increase ridership



## RESEARCH AND METHODOLOGY

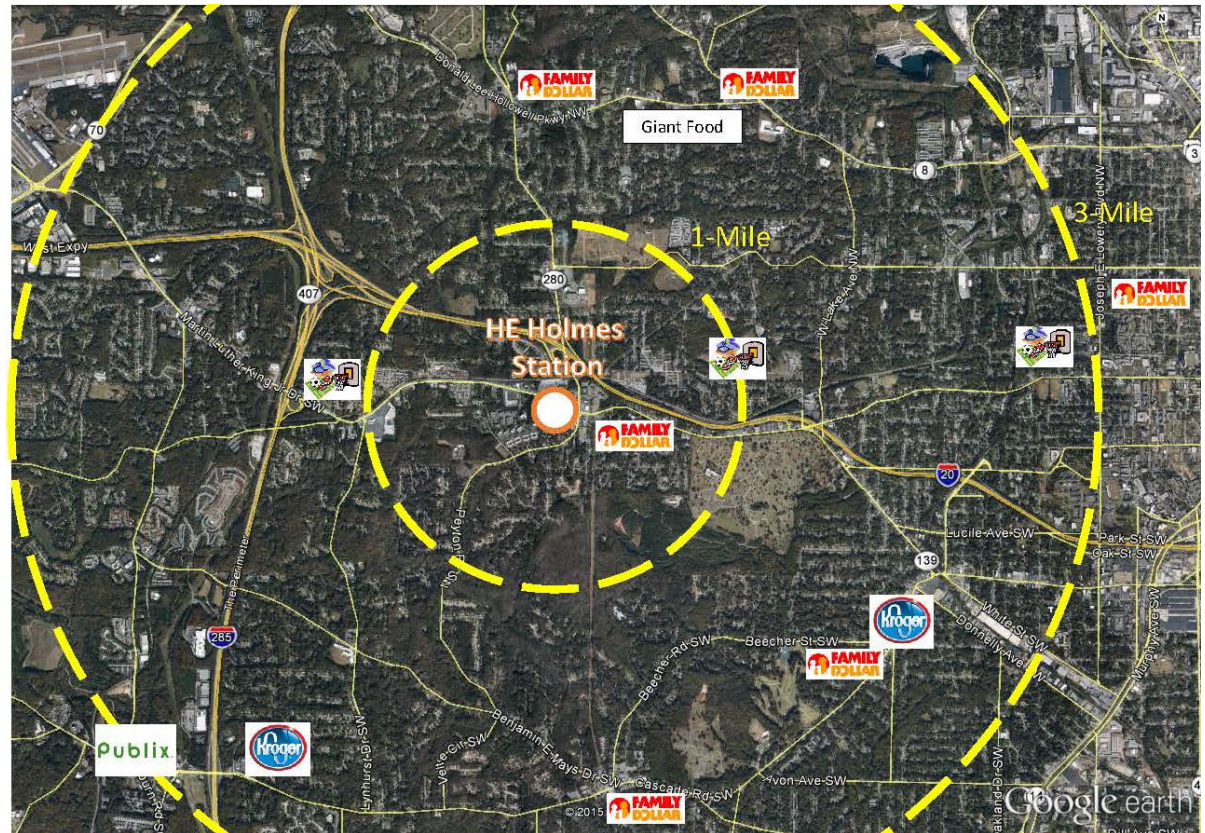
- LCI
- LCC
- Atlanta's Project Greenspace: Needs Assessment





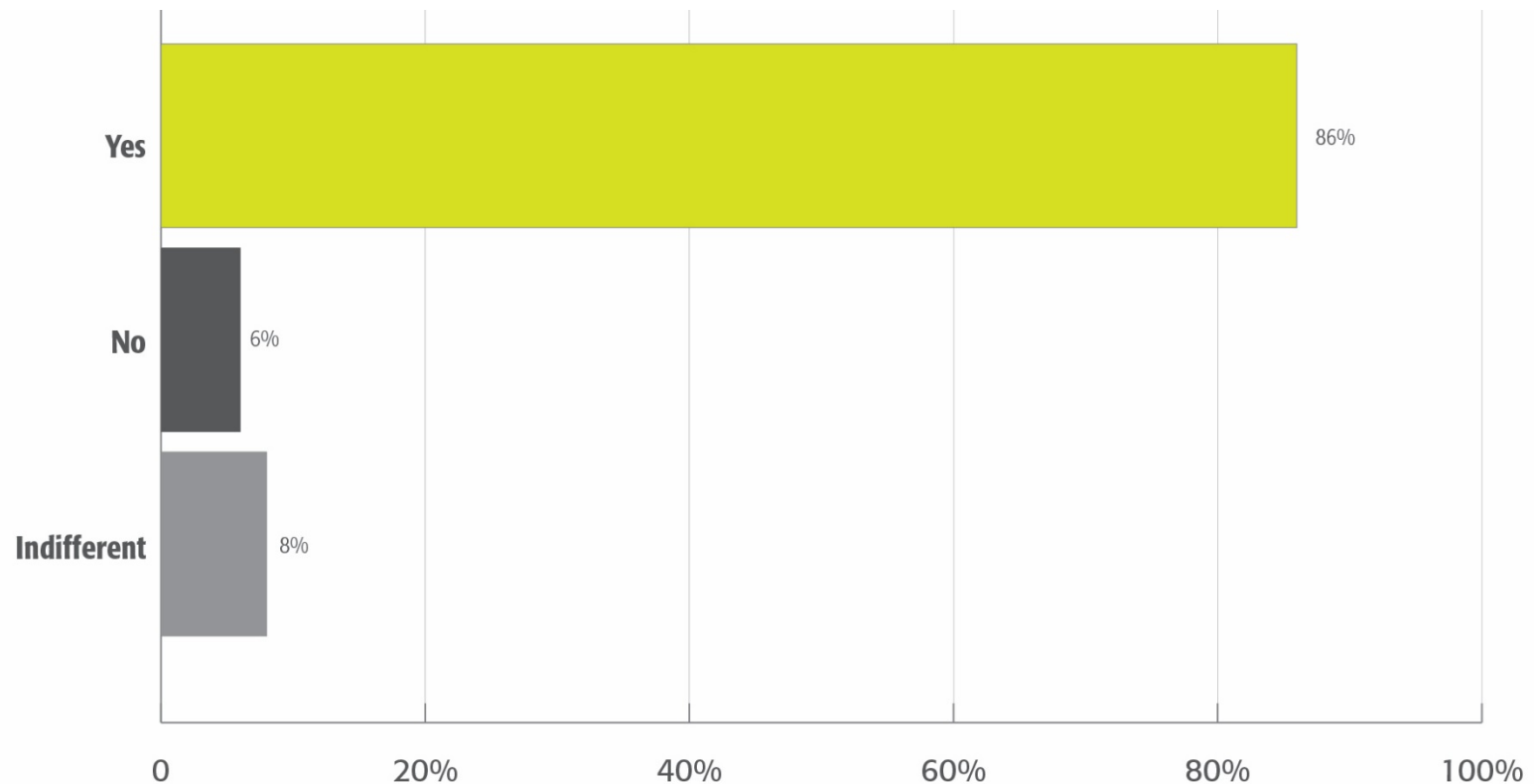
### COMMUNITY INVOLVEMENT

- Engage to understand needs of the community



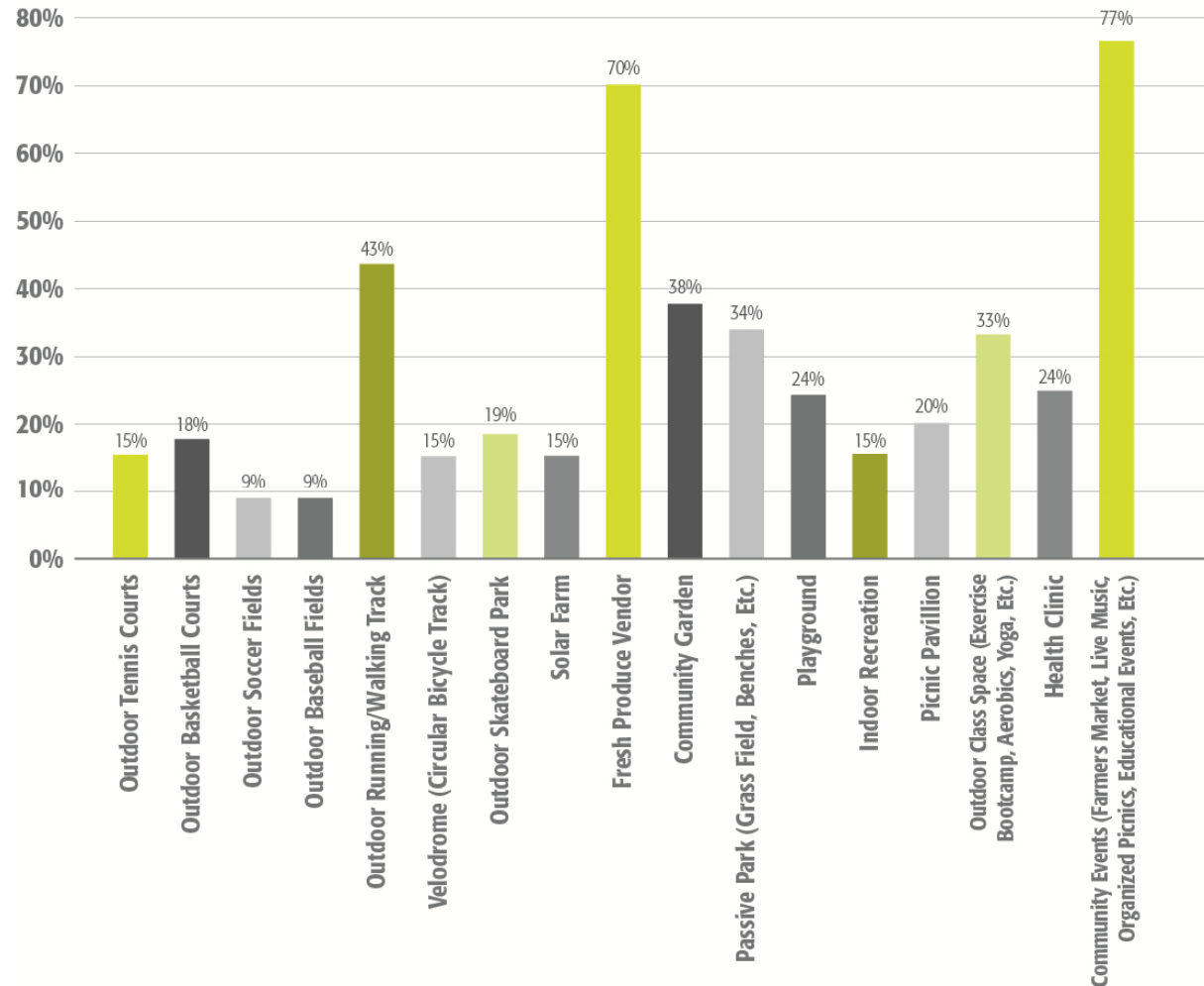
### SURVEY FINDINGS

Would you like to see some of the underutilized parking used for new community amenities?



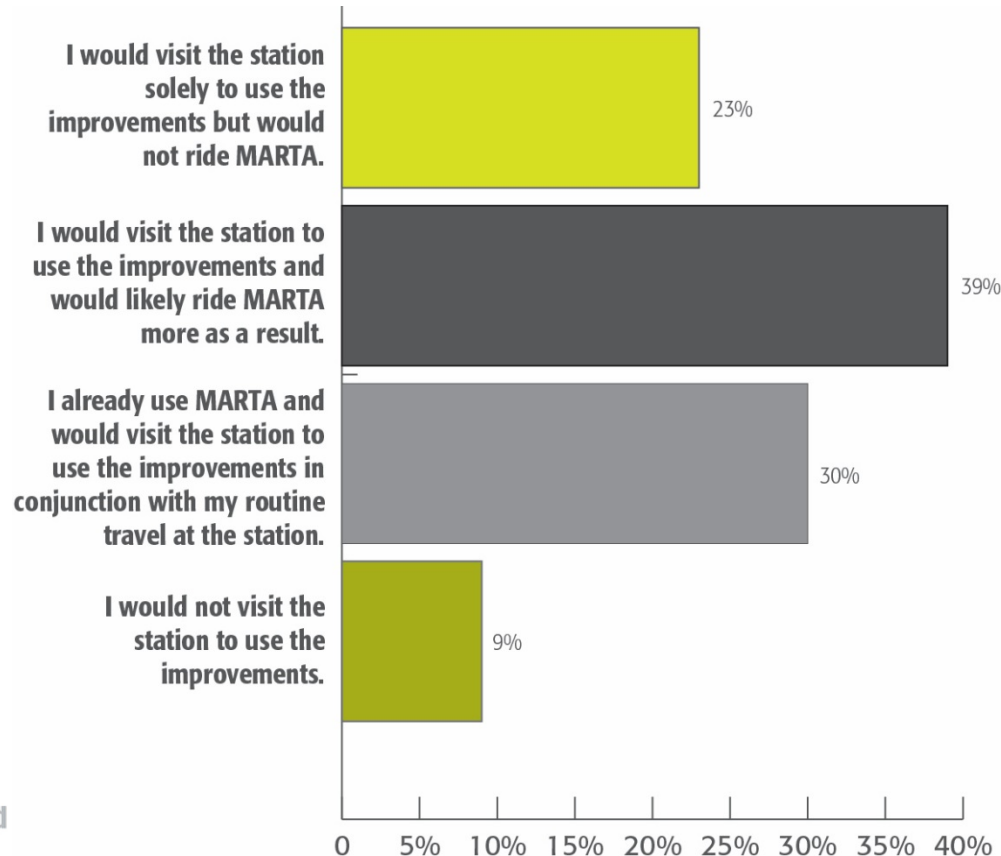
### SURVEY FINDINGS (Continued)

Which of the following amenities would you like to see provided at the H.E. Holmes Station?



### SURVEY FINDINGS (Continued)

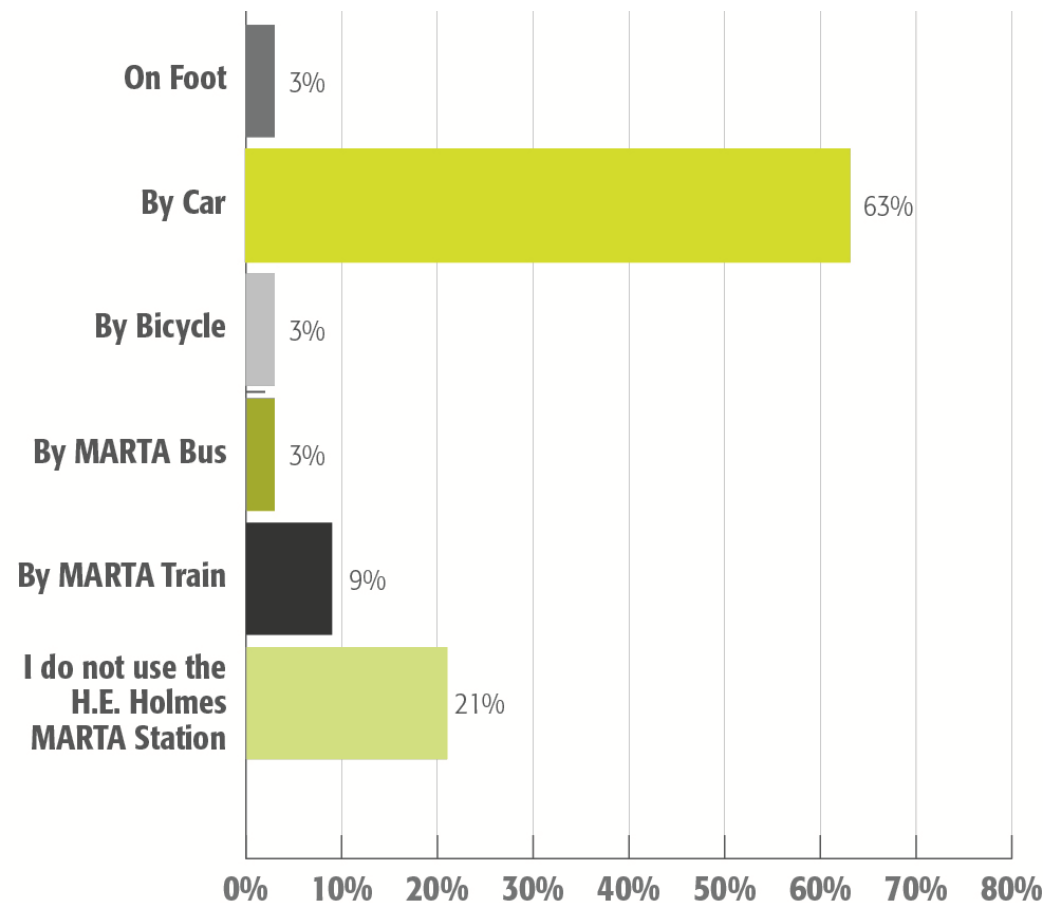
If any of the improvements listed in Question 2 were provided at the H.E. Holmes MARTA Station, would you visit the station solely to use the items or in conjunction with your routine travel?





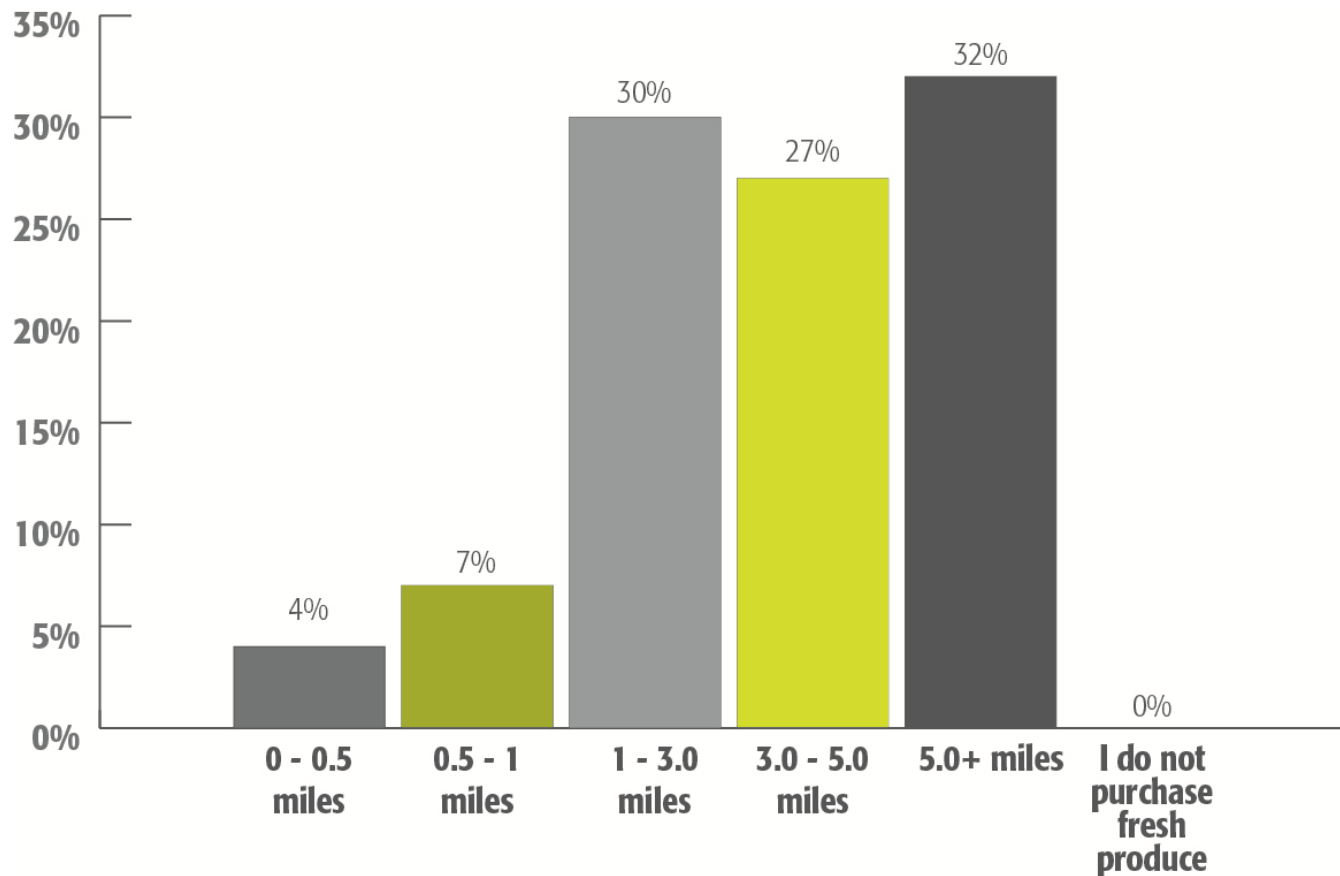
### SURVEY FINDINGS (Continued)

How do you currently access the H.E. Holmes MARTA Station?



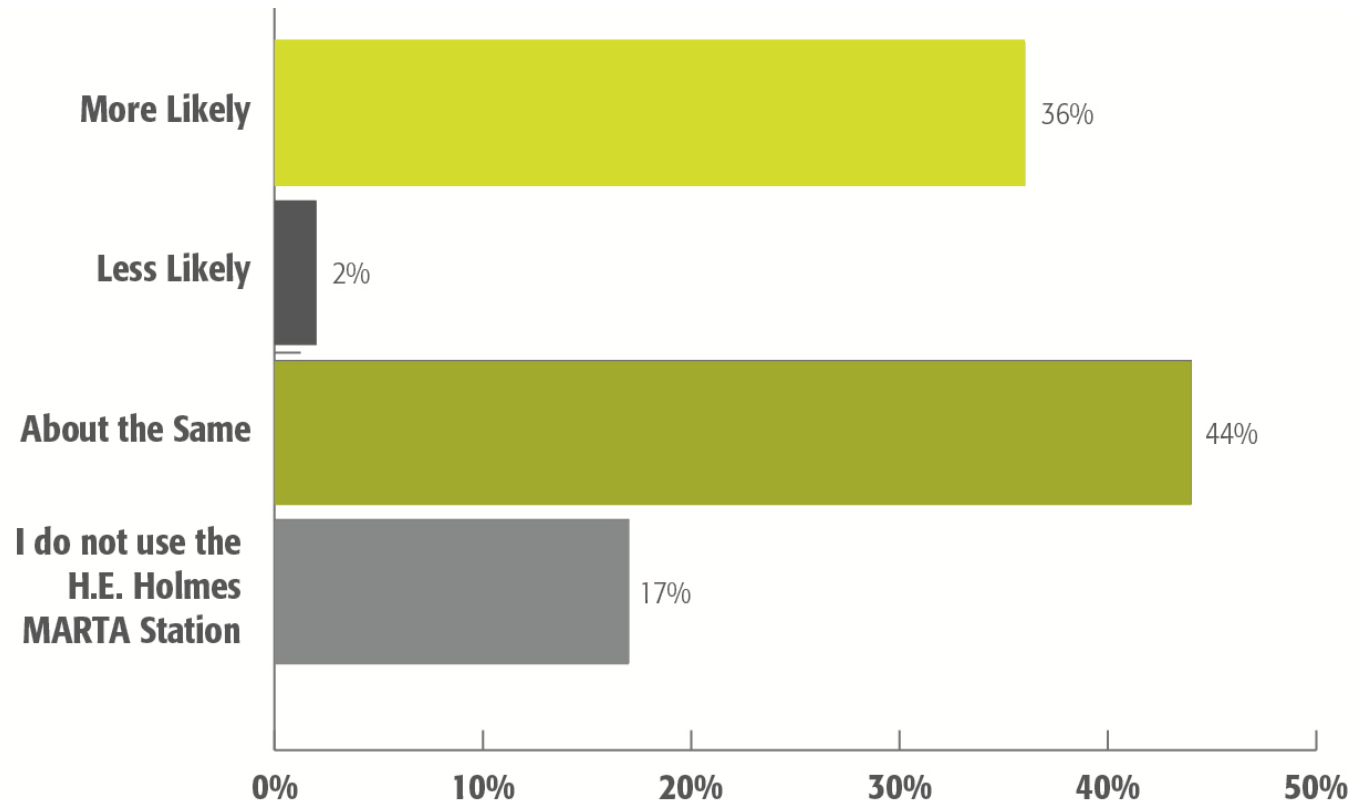
### SURVEY FINDINGS (Continued)

On average, how far do you travel to purchase fresh produce?



### SURVEY FINDINGS (Continued)

If a crosswalk was installed at the H.E. Holmes MARTA Station from the north side of MLK Jr. Drive across to the south side of MLK Jr. Drive, how much more likely would you be to access the station?



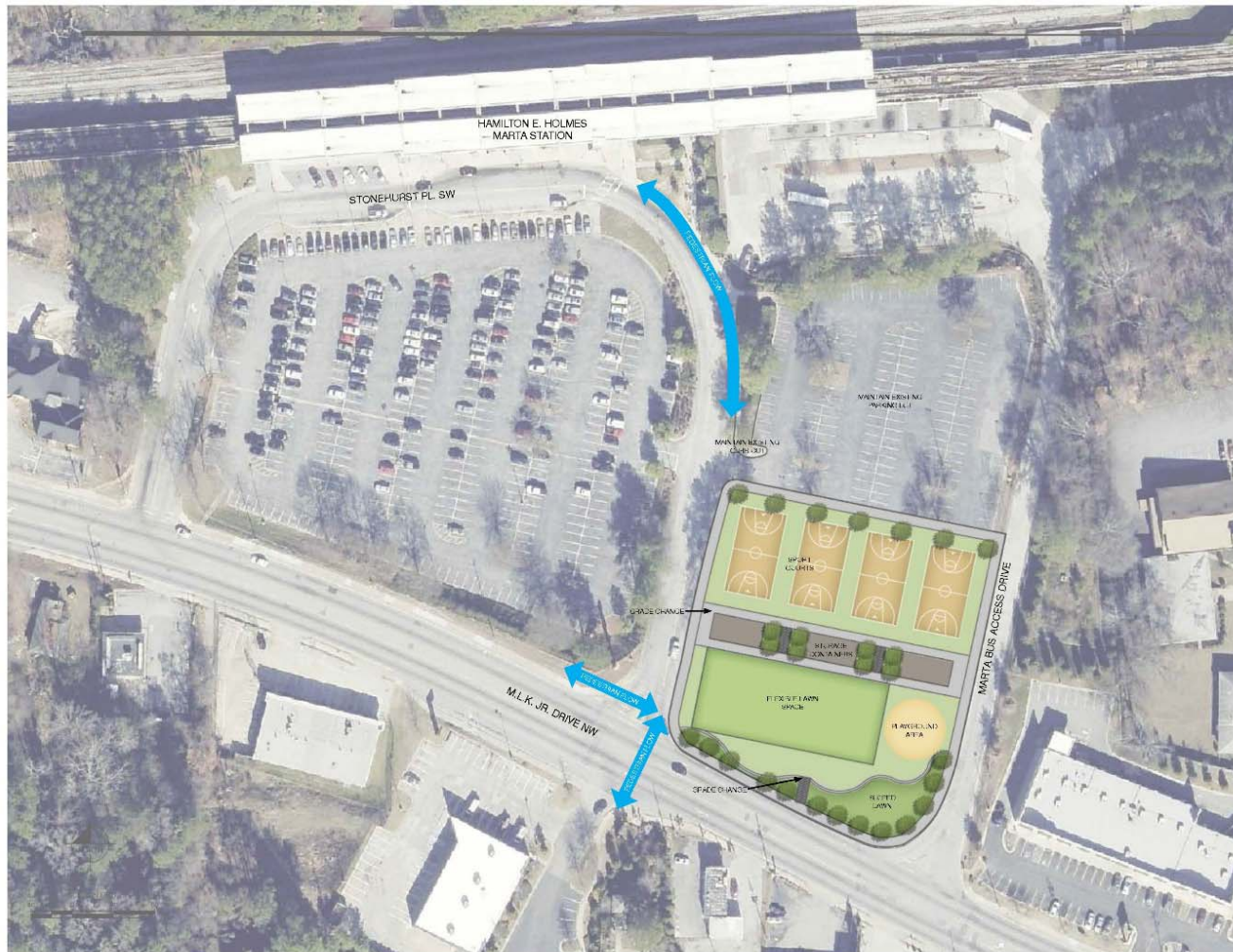


## PROGRAM RECOMMENDATIONS

- Open Space for Community Events
- Sport Courts
- Shelter Areas
- Flexible Lawn Space
- Playground Area
- Enhanced Streetscape

# Hamilton E. Holmes MARTA Station | mTAP Recommendations

## SITE PLAN



### PHASING

- **Phase I - \$7,000 to \$14,000:**  
Host Food Trucks, Farmers Markets, Fresh Food Vendor, and/or a Community Arts Festival
- **Phase II - \$10,000 to \$150,000:**  
Increase Pedestrian Access
- **Phase III - \$375,000 to \$585,000:**  
Due Diligence & Design, Install Sports Field and Community Garden
- **Phase IV - \$30,000 to \$60,000:**  
Install Storage Containers
- **Phase V - \$50,000 to \$270,000:**  
Install Sport Courts



# COST ANALYSIS

- Due Diligence and Design - \$80,000
- Demolition of Southern Half of Parking Lot - \$180,000
- Site work - \$70,000 to \$240,000
  - Option A – Gradual Transition between Flexible Lawn Space and Sports Courts - \$70,000
  - Option B – Immediate Transition Between Grades - \$140,000
  - Add-On Option C – Plumbing for Storage Container Restrooms - \$25,000 - \$100,000
- Storage Container - \$30,000 to \$60,000
- Sport Fields and Landscaping - \$20,000  
Community Garden - \$15,000
- North Lot Preparation - \$7,000
- Playground - \$10,000 to \$50,000
- Sport Courts - \$50,000 to \$180,000
  - Option A – Asphalt - \$50,000
  - Option B - Interlocking Multipurpose Sport Court System - \$135,000
  - Option C – Poured in Place Rubber surface - \$150,000
  - Add-On Option D – Accessories for Sport Courts Allowance – up to \$30,000
- Event Seating - \$18,000
- Pedestrian Access - \$10,000 to \$150,000
  - Option A – Crosswalk - \$10,000
  - Option B – Traffic Signal - \$150,000
- Sport Court Lighting - \$70,000

### FUNDING

- MARTA Participation
- Hollowell/Martin Luther King TAD
- Atlanta Region Commission Grants: Livable Center Initiative
- Quality of Life Bond (QOL) Program
- Donations and Grant Opportunities
- Sponsorship Opportunities
- Potential Ongoing Revenue Sources

## OPERATIONS

- Sports Facilities Management
- Management by City Parks and Recreation
- Direct Management by MARTA



### NEXT STEPS

- Continued community engagement (focus groups)
- MARTA buy-in/vetting scope determination
- Identifying funding source
- Geotechnical/current survey/environmental
- Refined Design

## CONCLUSION

- Activates the site
- Generates ridership
- Provides community amenity
- Lays groundwork for future development

Tunnell-Spangler-Walsh and Associates created a potential concept plan for TOD development at H.E. Holmes Station. This concept plan is for illustrative purposes only and shows one of many possible options for TOD in the station area.



# Hamilton E. Holmes MARTA Station | mTAP Recommendations

## QUESTIONS

