



Urban Land Institute

Idaho

Annual Review | 2018

Preview | 2019

A Message from ULI Boise Chair



ULI Idaho is very pleased to realize the benefits of having a full-time staff person. Kâren Sander arrived running full speed and made a significant and immediate positive impact and we are in a good position as we transition to a new Manager. ULI Idaho membership is up 27%. Program participation more than doubled to over 1,000 participants during FY 18. A very successful TAP (Technical Assistance Panel) was executed in Coeur d'Alene and received positive reviews. ULI committees are staffed with volunteers and fully engaged. They are all meeting regularly with robust agendas and terrific participation and outcomes. As Chair, I could not be more pleased with the progress and participation of the ULI Idaho membership.

One theme for 2017/18 was "The Value of Urban". ULI Idaho has made some inroads with neighboring communities and hopes to strengthen these ties going forward and expand the influence of ULI Idaho out of Ada County predominantly and into Canyon County, eastern Idaho, and central Idaho. The goal of ULI Idaho is to expand its reach and brand and to help less densely populated areas of the state understand better the value of density and anticipating and planning for growth.

ULI Americas has committed millions of dollars to improve and expand its database of knowledge and sharing with the ULI membership. ULI originally was a "think tank" which studied and documented a multitude of issues surrounding growth and creating vibrant communities. Today this vast reservoir of knowledge, experience, and study is available in a very easy to access format at www.ULI.org. ULI Americas is dedicated to improving Member Development, Member Engagement, and Member Impact. A robust database for easy access to information and ways to participate is being developed. Knowledge Finder is a robust database of Product Council Meeting Agendas, Advisory Services Panel Reports, District Council Events, Technical Assistance Panel Reports, and People. ULI Americas is also changing its membership structure to make it more accessible and priced more appropriately depending upon the member's status.

ULI Idaho is getting closer to our goal of 250 members and we encourage you to help us grow. The more members we have the better our delivery to the communities we serve. Making Idaho a better place is first and foremost in our thinking. We need more people with the same passion to join us.

Thank you for your continued support and we look forward to FY19 with your full participation.

Sincerely,

Clay Carley, Old Boise

2018-19 Chair



Table of Contents

Accomplishments	4
FY18 Financials and FY19 Budget.	8
Programs and Tours.	9
Meetings and Events Sponsors	12
Membership Committee	13
WLI Mission Statement.	15
Leadership and Committees	17
Looking Ahead	18
ULI Mission	20
Past Chairs of ULI Idaho.	21

Accomplishments

ULI Healthy Vista Avenue Corridor Project

Implementation Grant

For the last two years, the Vista Healthy Corridor initiative has been focused on transforming Vista Avenue into a healthy and vibrant economic corridor. This diverse group of passionate residents, business owners and Vista advocates targets its efforts on three main categories: moving, greening and enlivening.

In 2016, the Urban Land Institute (ULI) completed an assessment of the Vista Ave. corridor in partnership with the neighborhood stakeholders, producing a list of recommendations which led to the formation of the group of residents and business owners dedicated to making positive change along the corridor. With support from ULI and the City of Boise, the current steering committee includes representation from the Vista Neighborhood, Depot Bench Neighborhood Association, Vista Bench Business Association, D.L. Evans, Vista Village, Ada County Highway District, Albertsons, Boise State University, United Way, and Boise School District.

Through public input, residents determined they want to see Vista Avenue as a thriving commercial corridor that promotes positive change, reflects our diverse character and offers opportunity for all. Vista Avenue should be a beautiful livable neighborhood gathering place, vibrant business center, and an attractive destination that our City can be proud of. Vista Ave. should provide good

access to, from, and around our neighborhood for everyone.

With these goals, the group developed three focus areas for strategic action.

- **STREETS AND CIRCULATION** to make the street safer, more comfortable, and attractive for pedestrians, bicyclists and people using public transit.
- **ECONOMIC DEVELOPMENT** to improve the appearance and economic vitality of businesses on Vista Avenue.
- **CHARACTER, HEALTH, AND CONNECTEDNESS** to create an identity for Vista Ave. that builds community, opportunity and well-being.



Placemaking Grant

ULI Idaho, received funding from the Urban Land Institute and Kresge Foundation to support creative placemaking projects along commercial corridors. Creative placemaking describes a comprehensive community development approach that intentionally embeds arts, culture, and community-engaged design into strategies to revitalize and stabilize communities. ULI Idaho is the recipient of a grant for the project, “Activate Vista Corridor Sidewalks”. This grant follows on the work of a previous ULI Healthy Vista Avenue Corridor Project. That study identified the potential for creative placemaking in improving social and physical health through cultivating neighborhood identity and engagement. The full report can be viewed online at <http://uli.org/wp-content/uploads/ULI-Documents/Building-Healthy-Corridors-ULI.pdf>



Through a RFQ process, a selection committee made up of Vista Corridor neighborhood association, property owner, Boise State University and city representatives selected LED. LED was founded by husband-and-wife duo Lauren Edson and Andrew Stensaas in January of 2015. Lauren, a choreographer/dancer, and Andrew, a musician/composer, had a prior successful collaboration: “Shatter on the Rocks or Cover Your Ears”, which premiered at the Egyptian Theatre in Boise, Idaho on September 28th, 2013. LED is in the process of creating a project to be staged early September in the Vista neighborhood.

ULI Idaho was accepted to present at the 71st Annual Annual Association of Idaho Cities Conference

The Title of the Presentation was *“Better Together—Why Private Development & Public Interest are not Parallel Universes”* and was presented by: Hilary Anderson (City of Coeur d’Alene Planning Director, Bob Taunton of

Taunton Development, JoAnn Butler of Spink Butler LLP and , Diane Kushlan of Kushlan & Associates). One of the goals for ULI Idaho is to assist in the education of the development process and this provided that opportunity.

Accomplishments

Technical Assistance Panel

Vision for the Health Corridor Coeur d'Alene, Idaho

October 12-13, 2017

Technical Assistance Panels (TAPs) are part of the ULI Advisory Services program. TAPs are designed to be run and implemented by District Councils, the local chapters of ULI. Panelists for these one- to two-day work sessions are selected from the District Council's membership to address land use challenges that require local knowledge to resolve.

Background:

Started in 2013, CDA 2030 an alliance of citizen volunteers representing key public, private, civic, and community-based organizations, worked in partnership to create and implement a vision for the community. A high priority action identified by over 3,000 citizens who participated in the visioning process was the establishment of a Coeur d'Alene medical corridor from US Highway 95 (US 95) to Northwest Boulevard along Ironwood Drive to support needed expansion of medical services and associated medical businesses.

To help advance their work, CDA 2030 engaged ULI Idaho to organize a Technical Assistance Panel. CDA 2030 saw this as an approach that would ensure a thorough, neutral process that gives due consideration to all stakeholders and supports the community's best interests.

Coordinated by CDA 2030, a briefing book was prepared with contributions from the City of Coeur d'Alene, Kootenai Health, Parkwood Business Properties, Coeur d'Alene Chamber of Commerce, Coeur



d'Alene Association of REALTORS®, and the Idaho Department of Labor. The Briefing Book provided a comprehensive survey of data and information related to the corridor area including: property characteristics, land use, zoning, public policies, employment, real estate market, population, and infrastructure. TAP members reviewed the information prior to the TAP engagement in Coeur d'Alene.

The TAP review was held on October 12-13, 2017 in Coeur d'Alene. Six members of ULI Idaho and two members of ULI Northwest comprised the TAP with expertise in land use, transportation, real estate, and medical campus planning. The review began with a morning briefing and tour of the area, followed by an afternoon of nine small group interviews with 43 individuals. Participants in the interviews were representatives of a broad base of community interests including small and large businesses, education, public officials, and residents. The TAP reconvened after the interviews and the following morning to discuss and formulate their



recommendations based on what they heard. Their findings and recommendations were presented to the TAP sponsors after the two-day review.

The TAP conclusions were provided in a list of ten general findings and observations, and specific recommendations in six topical areas and include:

Findings and Observations

1. Lack of vision/master plan
2. Uncertainty impeding reinvestments
3. Inconsistent image and identity
4. Traffic congestion is the major issue
5. Need for safe and connected pedestrian/bicycle infrastructure
6. High level of community support for the hospital and interest in the area
7. Limited formal partnership between the hospital and the civic leadership
8. Risk of impeding future growth until congestion is resolved
9. Hodgepodge, haphazard pattern of development
10. Inconsistent regulatory support for adopted policies

Recommendations

1. Vision and Branding
2. Transportation System
3. Real Estate Opportunities and Strategies
4. Supportive Land Uses
5. Neighborhood Stabilization
6. Implementation

Technical Assistance Panel Members

Bob Taunton, *Technical Assistance Panel Chair, President, Taunton Group, Boise, ID*

George Iliff, *Managing Owner, Colliers Boise, Boise, ID*

Diane Kushlan, *AICP, Principal, Kushlan | Associates, Boise, ID*

Brian Newman, *Vice-President, Campus Development Oregon Health and Sciences University, Portland, OR*

Jeremy Malone, *RPA, Vice President, Oppenheimer Development Corporation, Boise, ID*

Al Marino, *SIOR, Partner, Thornton Oliver Keller, Boise, ID*

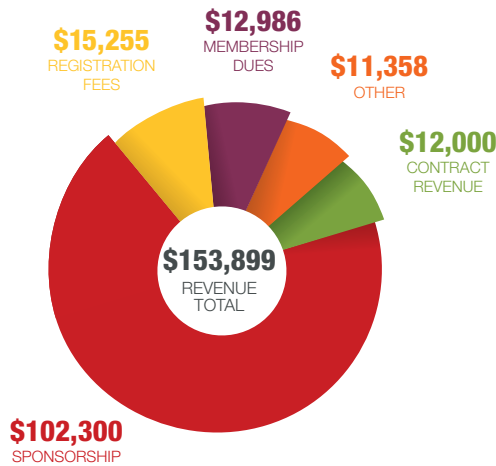
Ross Tilghman, *President, Tilghman Group, Seattle, WA*

Karen Sander, *Staff, ULI Idaho*

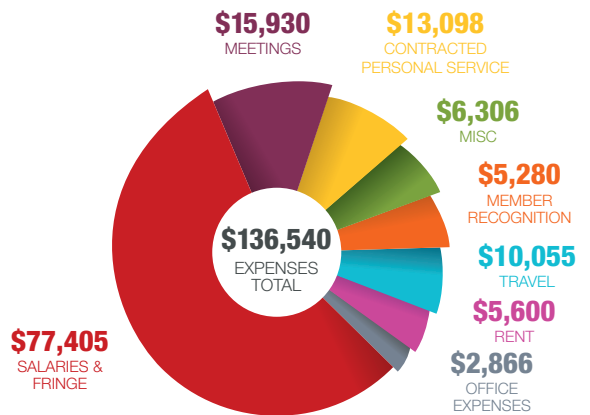
Full report can be viewed online at: idaho.uli.org/uli-in-action/technical-assistance/

FY 18 Financials

Revenue

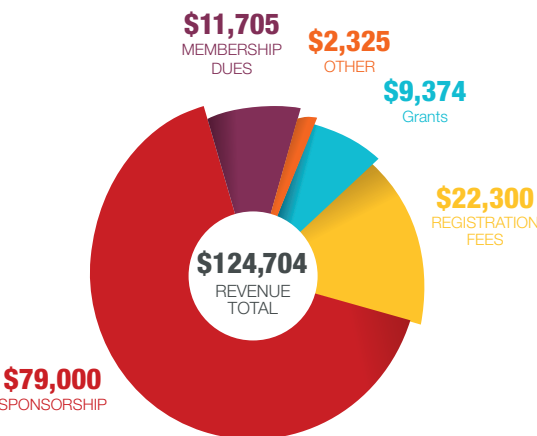


Expense

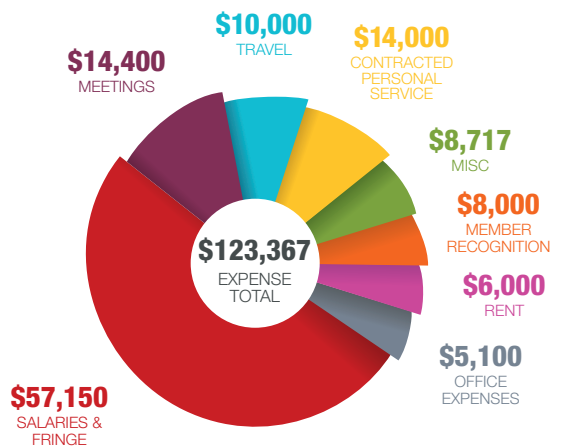


FY 19 Budget

Revenue



Expense

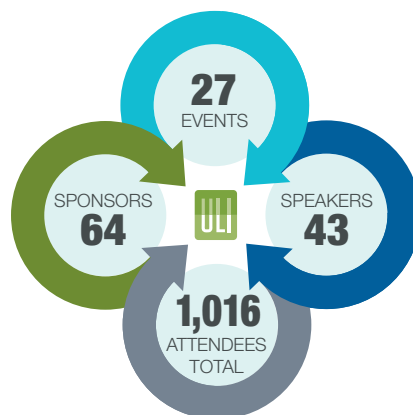


Programs and Tours

Highlights

- Healthy Vista Corridor Implementation Grant put into action
- Healthy Vista Corridor Creative Placemaking Grant awarded
- Kootenai Health Corridor Technical Assistance Panel and Report
- Created a Women's Leadership Initiative Program

By the Numbers



Programs

YLG Summer Social

July 18, 2017

Food & Real Estate: Economic Impact of Food Halls, Hubs and Markets

August 29, 2017



Economic Impact of Historic Preservations

September 22, 2017

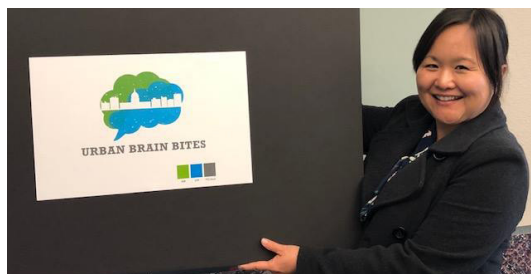


YLG – Compass Communities in Motion 2040 2.0

September 26, 2017

Women's Leadership Initiative – Urban Brain Bites

November 7, 2017



YLG CEO Series with Diane Kushlan

November 8, 2017



Real Estate Trends 2018

November 13, 2017

Member Welcome and Orientation

December 4, 2017

Holiday Social with Idaho Smart Growth & US Green Building Council

December 5, 2017



Rethinking School Spaces: Smart Land Use, Shared Uses and Repurposed Buildings

January 19, 2018

Women's Leadership Initiative – Urban Brain Bites

February 6, 2018

YLG CEO Series with Kent Hanway

February 7, 2018



Harvesting the Value of Water: Stormwater, Green Infrastructure and Real Estate

February 21, 2018

Harvesting the Value of Water: Stormwater, Green Infrastructure and Real Estate: Inland NW

February 22, 2018



WLI – Content and Cocktails: Urban Wineries

March 20, 2018



WLI – Urban Brain Bites

April 12, 2018

YLG CEO Series with Bob Taunton

May 9, 2018

To & Through: Front & Myrtle Couplet Alternatives Analysis

May 15, 2018

My ULI Advantage: New Member Orientation

June 4, 2018

WLI – Urban Brain Bites

June 12, 2018

Annual Chairs' Reception and Summer Socials

June 25, 2018

Tours

Tour of Watercooler Apartments and Idaho Street Townhomes

July 11, 2017

Tour of Crescent Rim Condominiums East

August 17, 2017



Tour of Athlos Academies

October 16, 2017



YLG – Tour of the Fowler Apartments

March 21, 2018



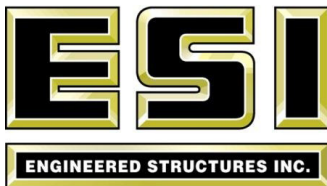
YLG – Tour of Identity Student Housing

June 13, 2018



Meetings and Events Sponsors

PLATINUM SPONSOR



Andersen Construction

Boise Co-Op

Capital City Development

Clark Development

Coeur d'Alene Association of Realtors

Cole Architects

Colliers International

Create Common Good

CSHQA

CTA Architects & Enginners

Cushman Wakefield Pacific

Givens Pursley, LLP

Group One Sotheby's International Realty

Harris Ranch

Hawley Troxell

Henrickson Butler

Herman Miller

Hyatt Place

Idaho Realtors

Idaho's Heritage Conference

Ignite CDA

JUB Engineers

Local Construct

McKibben + Cooper Architects

Miller Stauffer Architects

Mountain West Bank

National Association of Realtors

NewMark

Old Boise

Oppenheimer Development

Parkwood Business Properties

Ralston Group

Springhill Suites

Stoel Rives LLP

Taunton Group

The Owyhee

Urban Concepts

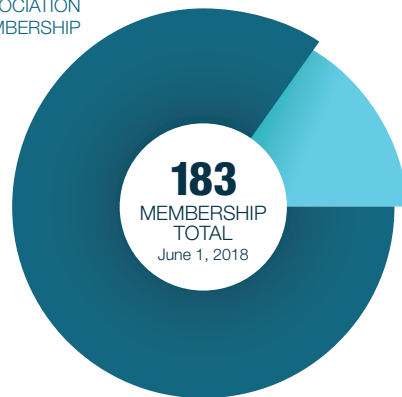
Zions Bank

Membership Committee

The ULI Idaho membership committee has experienced a strong uptick in memberships this year. Thanks in large part to the addition of Executive Director, Kâren Sander, as well as an active membership committee with members from Young Leaders Group and Women's Leadership Initiative. According to recent reports from ULI National, Idaho District Council ranks second behind Kentucky with an annual membership percentage increase of 27%.

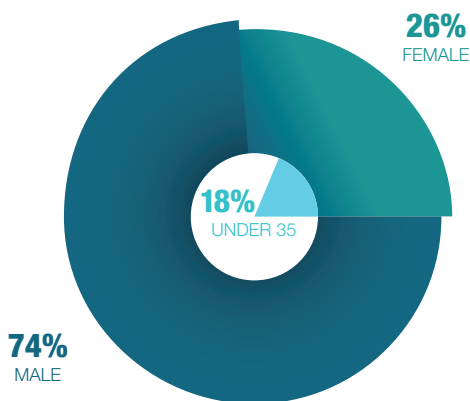
84.62%
ASSOCIATION
MEMBERSHIP

15.35%
FULL
MEMBERSHIP



To date we have 183 members and we are well on our way to achieving our goal of 250 members. Our efforts to attract new members has resulted in 46 new memberships this fiscal year. The membership committee has made an effort to personally reach out and thank each new member for investing in themselves by joining ULI. In addition to hand written welcome letters, the committee has begun to implement a welcome/orientation event called Your ULI Advantage at which new members have the opportunity to meet current ULI Idaho board members and learn about the benefits of their membership. The committee has also made an effort to reach out to those whose membership is about to expire with an encouraging

reminder to renew and continue their engagement with ULI. Our committee has also received support from ULI National in the form of incentives to encourage new memberships at a \$50 discount on all membership levels. One of the challenges that remains for our committee is retaining members that are transitioning from Young Leaders Group to a regular Associate Member. The cost increase is prohibitive to some members so ULI National is exploring a tiered membership increase in an effort to retain members as they mature from one membership level to another.



Bryant Forrester, Membership Co-Chair

Julie Oliver, Membership Co-Chair

Programs Committee



*Diane Kushlan,
Committee Chair*

The program committee had a busy year and more than doubled the number of programs and attendees during FY 18. The FY 18 theme was “The Value of Urban”. The characteristics of urban include a compact mix of economically viable land uses with supportive public spaces and facilities that can be efficiently sustained overtime. Urban can include downtowns, community and neighborhood centers. Increasingly urban is being found in what were suburban locations. With this Value of Urban initiative ULI Idaho focused on programs that addressed topics key to creating urban environment. A full summary of programming is on page 9.

Women's Leadership Initiative



*Danielle Hurd and Claudia Day,
Co-Chairs*



ULI Idaho launched a local Women's Leadership Initiative during FY 18 with immediate success. The committee established a local mission statement and guiding principles and initiated two new programs: Urban Brain Bites and Content with Cocktails.

Urban Brain Bites is where a video is viewed over the lunch hour followed by a discussion about the content of the video, the message and any actions to be taken. Think “book club” without having to read a book!

Content with Cocktails is where the WLI hosts a late afternoon learning opportunity accompanied by social networking.

Young Leaders Group



Matt Blandford

ULI Idaho expanded its YLG efforts in 2017-18 with the initiation of a leadership committee. The committee's focus over the past year has been YLG specific programming, membership recruitment, general outreach and education. Each of the committee members also serve on other district council committees including: membership, programs and the management committee. Providing value to current and prospective YLG members has been a major point of emphasis for the committee. The quarterly YLG sponsored CEO Series program where current ULI – Idaho Advisory Board members are interviewed in an informal Q&A session has been a great tool for recruitment and raising awareness of ULI's mission locally.

Mission Advancement



Bruce Wetten

The CMA job is easy but very necessary to the success of ULI Idaho long term. Someone can be as involved as they want in this position and will find that there are many others, throughout the country, who have taken this job to a new level.

The CMA conference calls are important, informative and not too frequent. They are a great way to better understand the role of CMA and, more importantly, all of the resources ULI has to offer.

Although the official job description talks about making sure the Idaho Chapter is staying within the national guidelines the more valuable role is sharing with the Idaho Chapter all the specific resources ULI National possess.

WLI National Mission Statement

The mission of the ULI Women's Leadership Initiative is to raise the visibility and number of women leaders in ULI and the real estate industry.

ULI Idaho WLI Mission Statement

Dedication to, and success at, building thriving communities across the ULI Idaho region.

Objectives

The mission of the WLI is expressed in its four primary objectives:

- Promote the advancement of women, throughout their careers, as leaders in the real estate industry.
- Increase the number of women who serve in leadership positions in the real estate industry and in ULI.
- Increase the visibility of women leaders in the real estate industry and in ULI.
- Increase the number of women who are active ULI Full members, and support the development of young women members as leaders in ULI and in their professions



Guiding Principles

- Always be in alignment with and support the mission of ULI and the WLI.
- Provide education.
- Be inspirational and fun.
- Engage powerful women as mentors and leaders to guide our WLI community.
- Encourage all ages to participate.
- Capacity to inspire others in the industry.

Developer's Product Council

The ULI Idaho Developer's Product Council enjoyed the variety of programming and guest speakers that were provided throughout the year and enjoyed the willingness to share among its members and create meaningful dialog.

They enjoyed a presentation by Skip Oppenheimer on the Federal Reserve, a presentation from Scott Shapiro from Seattle on Micro Housing, access to keynote speakers at exclusive roundtables, a tour of Guerdon Manufacturing and multiple shared discussions about local issues and projects.



The purpose of the Developer's Council is to bring value to ULI membership by providing a venue for sharing information and best practices in a collaborative and collegial way. Specific intentions for the Product Council and its members are:

- To find common ground without discussion of exact deals (infrastructure issues, policy issues, entitlement issues, etc.); items which are common issues but not confidential, and issues which are more "anecdotal" rather than deal points.
- To discuss relevant issues of the day or provide evaluation of case studies.
- To talk about what is important to Product Council members.
- To provide a venue for sharing, not acting. Councils are NOT intended to "do something or take action", but the Council can help inform programming.



Scott Schoenherr, Rafanelli & Nahas, Chair – ULI Idaho Developer's Product Council

FY19 Leadership & Committees

Management Committee



Clay Carley, Chair



Kent Hanway,
Governance



Jeremy Malone,
Treasurer



Bruce Wetten,
Mission
Advancement



Diane Kuslan,
Program Committee
Chair



Matt Blandford,
YLG Chair



Bryant Forrester,
Membership
Co-Chair



Julie Oliver,
Membership
Co-Chair



Scott Schoenherr,
Developer's Product
Council Chair



Claudia Day, WLI
Co-Chair



Danielle Hurd, WLI
Co-Chair

Developer's Product Council

Tom Bobo, *Grossman Companies*

Clay Carley, *Old Boise*

Bill Clark, *Clark Development*

Bill Ditz, *Mountain West Group*

Erik Davis, *Retail West*

Mike Fery, *Rocky Mtn Companies*

Doug Fowler, *Harris Ranch*

Blake Hansen, *Alturas*

Michael Hormaechea,
Hormaechea Construction

Jeremy Malone, *Oppenheimer Co*

Dean Pape, *De Chase Development*

Scott Schoenherr, *Rafanelli & Nahas*

Ivan Sim, *Idaho Power*

Jared Smith, *Penn Bridge Development*

Bryan Vaughn, *Hawkins Companies*

Ben Zamzow, *Rocky Mtn Companies*

Program Committee

Ryan Armbruster, *Elam & Burke*

Kristin Bjorkman, *Boise Cascade*

Matt Blandford, *Andersend Construction*

Stan Cole, *Cole Architects*

Chase Erkins, *Lee & Associates*

Diane Kushlan, *Kushlan & Associates*

Shannon McGuire, *Spark Strategies*

Laura Williams, *CCDC*

Young Leaders Group

Matt Blandford, *Andersen Construction*

Brendon Daniels, *Andersen Construction*

Chase Erkins, *Lee & Associates*

Christina Hardesty, *Parsons Behle*

Andrew Wheeler, *Pacific West Architecture*

Laura Williams, *CCDC*

Membership Committee

Brendon Daniels, *TO Engineers*

Bryant Forrester, *Urban Concepts*

Julie Oliver, *Oliver O'Gara/Keller Williams*

Laura Williams, *CCDC*

Advisory Board

Gary Allen, *Givens Pursley, LLP*

Cameron Arial, *City of Meridian*

Ryan Armbruster, *Elam & Burke*

Bradley Barker, *Group One Sotheby's International Realty*

Kristin Bjorkman, *Boise Cascade*

Matt Blandford, *Andersen Construction*

John Brunelle, *CCDC*

Clay Carley, *Old Boise*

Corey Cook, *Boise State University*

P. Eric Davis, *Retail West Properties, LLC*

Douglas Fowler, *Harris Ranch*

Jerry Frank, *Petra*

Chuck Graves, *McAlvain*

Kent Hanway, *CSHQA*

Christopher Humphrey, *Stoel Rives, LLP*

George Iliff, *Colliers International*

Douglas Johnson, *Bank of American/Merrill Lynch*

Clark Krause, *BVEP*

Mike Magill, *Engineered Structures, Inc*

Jeremy Malone, *Oppenheimer Development Corp.*

Al Marino, *Thornton, Oliver, Keller Commercial Real Estate*

Christopher Meyer, *Parkwood Properties*

Derick O'Neill, *City of Boise Planning & Development Services*

Scott Schoenherr, *Rafanelli and Nahas Management*

Ivan Sim, *Idaho Power*

Hilary Vaughn, *First American Title Insurance Company*

Bruce Wetten, *TitleOne Corp.*

Women's Leadership Initiative

Claudia Day, *Herman Miller*

Karena Gilbert, *TOK*

Christina Hardesty,
Parsons Behle

Danielle Hurd, *CTA Architects*

Shellan Rodriguez, *CCDC*

Hilary Vaughn, *First American Title*

Design & Placemaking Product Council

Kent Hanway, Chair, *CSHQA*

Stan Cole, *Cole Architects*

FY 19 Business Plan and Goals

Increase the sustainability of the Idaho District Council

- Explore programs like Urban Plan, TAPS, Local Product Councils and Development 360 that could offer alternate sources of funding.
- Continue to recruit members with an emphasis on Ada and Canyon County first, followed by regional Idaho locations.
- Expansion of the variety of programming to local members including programs for YLG and WLI.

Increase the Awareness of ULI Idaho (The Brand)

- Develop a targeted marketing campaign to increase awareness of ULI Idaho.

Develop Informed Community Leadership

- Provide training to local officials through programs like Urban Plan, Development 101, and offer local programming that provides valuable content for decision makers and community leaders.

Programming Themes for FY 19

- Affordable Housing
- Growth Management
- Protection of Natural Resources
- Transportation

New Membership Benefits

Navigator

ULI's latest member benefit, connecting you to an expanding library of member-generated content and ideas. It currently includes Product Council meeting agendas, Advisory Services Panel reports, District Councils event agendas, and Technical Assistance Panel reports—all searchable and in one place for the first time. This is an important step to making member knowledge, best practices and insights more accessible.

Navigator is the website platform that helps you find and connect to ULI opportunities to learn, lead, and grow. Navigator now offers more than 300 types of opportunities representing thousands of ways for you to get involved across every level of the organization.

Member Directory: Connect with the global ULI network anytime, anywhere.

ULI National has launched new membership benefits including:



Upping the Impact – FY18-FY19 Annual Sponsors

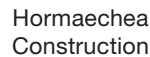
GOLD



SILVER PLUS

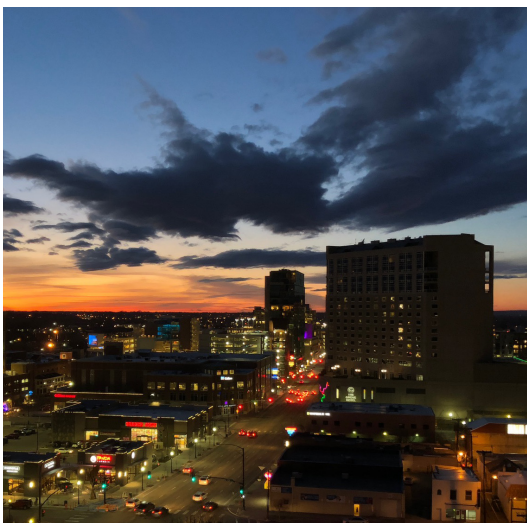


SILVER



BRONZE





ULI's mission is to provide leadership in the responsible use of land and in creating and sustaining thriving communities worldwide. We are committed to:

- Bringing together leaders from across the fields of real estate and land use policy to exchange best practices and serve community needs;
- Fostering collaboration within and beyond ULI's membership through mentoring, dialogue, and problem solving;
- Exploring issues of urbanization, conservation, regeneration, land use, capital formation, and sustainable development;
- Advancing land use policies and design practices that respect the uniqueness of both built and natural environments;
- Sharing knowledge through education, applied research, publishing, and electronic media; and
- Sustaining a diverse global network of local practice and advisory efforts that address current and future challenges.

ULI Priorities

- Advising Communities in Need
- Shaping Cities and Regions
- Developing Excellence Through Education
- Driving Innovation in Real Estate and Urban Development
- Building Sustainably
- Connecting Capital and the Built Environment

ULI Today

- The largest most impactful Real Estate and Land Use think tank in the world.
- A global organization with over 40,000 members across the globe on six continents in 76 nations delivering/providing leadership in the responsible use of land and creating and sustaining thriving communities worldwide.

Contact Us

PO Box 1957 Boise ID 83701

702 W. Idaho St., Ste 1100

Boise ID 83702

PH: 208.850.7300

Email: idaho@uli.org

facebook.com/OfficialULIdaho/

twitter.com/ULIdaho



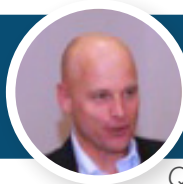
Past Chairs of ULI Idaho

FY04

Meeting of 40 ULI members organized by
Quentin Knipe

ULI Idaho District
Council is created

Community
Action Grant for
In-fill research



FY05

Quentin Knipe, Chair

FY08



YLG is formed
Mayors' Forums

Frank Martin, Chair

Sustainable Downtown
Development Focus
Technical assistance
to Nampa

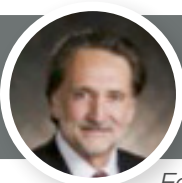
Urban innovation
grant for
Agriculture



FY10

Bob Taunton, Chair

FY12



Technical
assistance to
Meridian & GBAD

Urban Innovation
Grant for Real
Estate Partnership

Ed Miller, Chair

Next 1000 Housing Report
Vista Corridor
Demonstration grant

Advisory
Board meets
quarterly



FY14

George Iliff, Chair

FY16

Impact Award for Next
1000 Housing Report



Three grants for Health
Upping the Impact
campaign
ISG Award for Vista
Product Council formed

Kent Hanway, Chair